

## Product datasheet

# Anti-BDNF antibody ab46176

★★★★☆ 3 Abreviews 9 References 2 Images

### Overview

---

<b>Product name</b>	Anti-BDNF antibody
<b>Description</b>	Rabbit polyclonal to BDNF
<b>Host species</b>	Rabbit
<b>Specificity</b>	The antibody is specific to recombinant BDNF protein and when used in rat brains extracts detects a 28kDa proBDNF band and in some tissues will also recognise the mature BDNF homodimer. This antibody shows no cross-reactivity with NGF, NT3 and NT4/5 using Western blot analysis.
<b>Tested applications</b>	<b>Suitable for:</b> WB, ELISA, ICC/IF
<b>Species reactivity</b>	<b>Reacts with:</b> Mouse, Rat, Human
<b>Immunogen</b>	A peptide from the N-terminal region of mature mouse BDNF conjugated to a carrier protein to enhance immunological response.
<b>Positive control</b>	Rat brain This antibody gave a positive result when used in the following formaldehyde fixed cell line: SKNSH.
<b>General notes</b>	<p>This antibody recognizes both the mature BDNF and unprocessed precursor (proBDNF). BDNF is only seen as a 14 kDa band when it is run under reducing conditions. When a native gel is used, the dimeric form of BDNF is seen as a 28 kDa band.</p> <p>For BDNF, multiple WB bands are possible and expected. The human protein has 5 isoforms (precursors: 28 – 37 kDa) and can be glycosylated (Uniprot: <a href="http://www.uniprot.org/uniprot/P23560">http://www.uniprot.org/uniprot/P23560</a>). The mature form is expected at ~14 kDa (monomer) and the dimer at ~28 kDa.</p>

### Properties

---

<b>Form</b>	Liquid
<b>Storage instructions</b>	Shipped at 4°C. Store at +4°C short term (1-2 weeks). Upon delivery aliquot. Store at -20°C long term.
<b>Storage buffer</b>	Preservative: None Constituents: Whole serum
<b>Purity</b>	Whole antiserum
<b>Clonality</b>	Polyclonal
<b>Isotype</b>	IgG

## Applications

---

Our [Abpromise guarantee](#) covers the use of **ab46176** in the following tested applications.

The application notes include recommended starting dilutions; optimal dilutions/concentrations should be determined by the end user.

Application	Abreviews	Notes
WB	★★★★★	1/1000. Detects a band of approximately 28 kDa (predicted molecular weight: 28 kDa).
ELISA		1/10000.
ICC/IF		1/200.

## Target

---

### Function

During development, promotes the survival and differentiation of selected neuronal populations of the peripheral and central nervous systems. Participates in axonal growth, pathfinding and in the modulation of dendritic growth and morphology. Major regulator of synaptic transmission and plasticity at adult synapses in many regions of the CNS. The versatility of BDNF is emphasized by its contribution to a range of adaptive neuronal responses including long-term potentiation (LTP), long-term depression (LTD), certain forms of short-term synaptic plasticity, as well as homeostatic regulation of intrinsic neuronal excitability.

### Tissue specificity

Brain. Highly expressed in hippocampus, amygdala, cerebral cortex and cerebellum. Also expressed in heart, lung, skeletal muscle, testis, prostate and placenta.

### Involvement in disease

Bulimia nervosa 2  
Congenital central hypoventilation syndrome

### Sequence similarities

Belongs to the NGF-beta family.

### Post-translational modifications

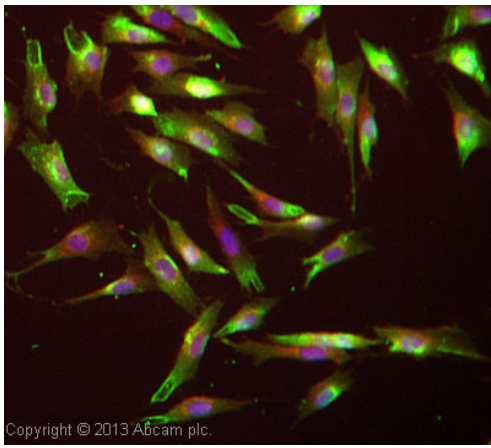
The propeptide is N-glycosylated and glycosulfated.  
Converted into mature BDNF by plasmin (PLG).

### Cellular localization

Secreted.

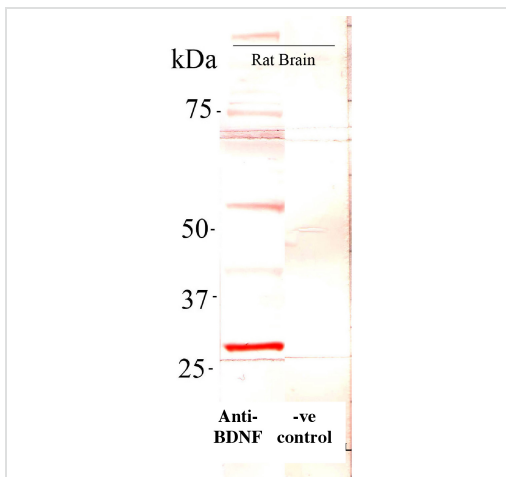
## Images

---



Immunocytochemistry/ Immunofluorescence - Anti-BDNF antibody (ab46176)

ICC/IF image of ab46176 stained SKNSH cells. The cells were 4% formaldehyde fixed (10 min) and then incubated in 1%BSA / 10% normal goat serum / 0.3M glycine in 0.1% PBS-Tween for 1h to permeabilise the cells and block non-specific protein-protein interactions. The cells were then incubated with the antibody ab46176 at 1/200 dilution overnight at +4°C. The secondary antibody (green) was DyLight® 488 Goat anti-Rabbit IgG (H+L) (ab96899) used at a 1/250 dilution for 1h. Alexa Fluor® 594 WGA was used to label plasma membranes (red) at a 1/200 dilution for 1h. DAPI was used to stain the cell nuclei (blue) at a concentration of 1.43µM.



Western blot - Anti-BDNF antibody (ab46176)

**All lanes :** Anti-BDNF antibody (ab46176) at 1/1000 dilution

**Lane 1 :** Rat Brain at 10 µl

**Lane 2 :** negative control

**Predicted band size:** 28 kDa

**Observed band size:** 28 kDa

**Please note:** All products are "FOR RESEARCH USE ONLY AND ARE NOT INTENDED FOR DIAGNOSTIC OR THERAPEUTIC USE"

### Our Abpromise to you: Quality guaranteed and expert technical support

- Replacement or refund for products not performing as stated on the datasheet
- Valid for 12 months from date of delivery
- Response to your inquiry within 24 hours
- We provide support in Chinese, English, French, German, Japanese and Spanish
- Extensive multi-media technical resources to help you
- We investigate all quality concerns to ensure our products perform to the highest standards

If the product does not perform as described on this datasheet, we will offer a refund or replacement. For full details of the Abpromise,

please visit <http://www.abcam.com/abpromise> or contact our technical team.

## Terms and conditions

---

- Guarantee only valid for products bought direct from Abcam or one of our authorized distributors