

## Product datasheet

# Anti-CD10 antibody [B-E3] ab47200

[1 References](#)   [1 Image](#)

### Overview

<b>Product name</b>	Anti-CD10 antibody [B-E3]
<b>Description</b>	Mouse monoclonal [B-E3] to CD10
<b>Host species</b>	Mouse
<b>Specificity</b>	This antibody is specific for CD10.
<b>Tested applications</b>	<b>Suitable for:</b> Flow Cyt, IHC-Fr
<b>Species reactivity</b>	<b>Reacts with:</b> Human
<b>Immunogen</b>	Daudi and Raji cell lines

### Properties

<b>Form</b>	Liquid
<b>Storage instructions</b>	Shipped at 4°C. Store at +4°C short term (1-2 weeks). Upon delivery aliquot. Store at -20°C or -80°C. Avoid freeze / thaw cycle.
<b>Storage buffer</b>	Preservative: None Constituents: PBS Sterile-filtered through 0.22 µm and treated to remove endotoxins. Carrier and preservative free.
<b>Purity</b>	Ion Exchange Chromatography
<b>Clonality</b>	Monoclonal
<b>Clone number</b>	B-E3
<b>Myeloma</b>	x63-Ag8.653
<b>Isotype</b>	IgG2a

### Applications

Our [Abpromise guarantee](#) covers the use of **ab47200** in the following tested applications.

The application notes include recommended starting dilutions; optimal dilutions/concentrations should be determined by the end user.

Application	Abreviews	Notes
Flow Cyt		

Application	Abreviews	Notes
-------------	-----------	-------

IHC-Fr

### Application notes

Flow Cyt: Use at an assay dependent dilution.  
 IHC-Fr: Use at an assay dependent dilution.  
 Does not inhibit the Mixed Lymphocyte Culture.  
 Cytotoxic in association with the Rabbit Complement on CD10+ Cells.

Not yet tested in other applications.  
 Optimal dilutions/concentrations should be determined by the end user.

### Target

### Function

Thermolysin-like specificity, but is almost confined on acting on polypeptides of up to 30 amino acids. Biologically important in the destruction of opioid peptides such as Met- and Leu-enkephalins by cleavage of a Gly-Phe bond. Able to cleave angiotensin-1, angiotensin-2 and angiotensin 1-9. Involved in the degradation of atrial natriuretic factor (ANF). Displays UV-inducible elastase activity toward skin preelastic and elastic fibers.

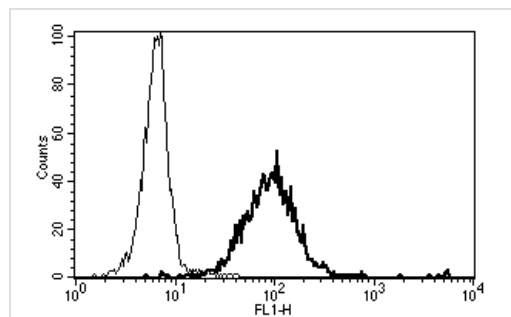
### Sequence similarities

Belongs to the peptidase M13 family.

### Cellular localization

Cell membrane.

### Images



A typical staining pattern with ab47200.

Flow Cytometry / FACS - CD10 antibody [B-E3] - Azide free (ab47200)

**Please note:** All products are "FOR RESEARCH USE ONLY AND ARE NOT INTENDED FOR DIAGNOSTIC OR THERAPEUTIC USE"

### Our Abpromise to you: Quality guaranteed and expert technical support

- Replacement or refund for products not performing as stated on the datasheet
- Valid for 12 months from date of delivery
- Response to your inquiry within 24 hours
- We provide support in Chinese, English, French, German, Japanese and Spanish
- Extensive multi-media technical resources to help you

- We investigate all quality concerns to ensure our products perform to the highest standards

If the product does not perform as described on this datasheet, we will offer a refund or replacement. For full details of the Abpromise, please visit <http://www.abcam.com/abpromise> or contact our technical team.

### **Terms and conditions**

---

- Guarantee only valid for products bought direct from Abcam or one of our authorized distributors