

Product datasheet

Anti-P2X2 antibody ab48864

2 References 2 Images

Overview

<b>Product name</b>	Anti-P2X2 antibody
<b>Description</b>	Rabbit polyclonal to P2X2
<b>Host species</b>	Rabbit
<b>Tested applications</b>	<b>Suitable for:</b> WB, IHC-P, ELISA
<b>Species reactivity</b>	<b>Reacts with:</b> Mouse, Human
<b>Immunogen</b>	A region within synthetic peptide: YPKFHFSKGN IADRTDGYLK RCTFHEASDL YCPIFKLGFI VEKAGESFTE, corresponding to internal sequence amino acids 181-230 of Human P2X2. Peptide available as <a href="#">ab95915</a> . <a href="#">Run BLAST with</a> <a href="#">Run BLAST with</a>
<b>Positive control</b>	Jurkat cell lysate, Human kidney.

Properties

<b>Form</b>	Liquid
<b>Storage instructions</b>	Shipped at 4°C. Upon delivery aliquot and store at -20°C. Avoid freeze / thaw cycles.
<b>Storage buffer</b>	Preservative: None Constituents: 2% Sucrose, PBS
<b>Purity</b>	Protein A purified
<b>Clonality</b>	Polyclonal
<b>Isotype</b>	IgG

Applications

Our [Abpromise guarantee](#) covers the use of **ab48864** in the following tested applications.

The application notes include recommended starting dilutions; optimal dilutions/concentrations should be determined by the end user.

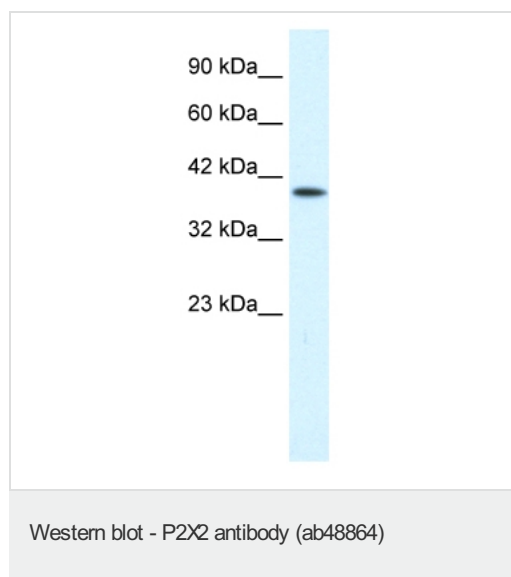
Application	Abreviews	Notes
WB		Use a concentration of 0.6 µg/ml. Detects a band of approximately 40 kDa (predicted molecular weight: 40 kDa). Good results were obtained when blocked with 5% non-fat dry milk in 0.05% PBS-T.

Application	Abreviews	Notes
IHC-P		Use at an assay dependent concentration.
ELISA		Use at an assay dependent concentration.

## Target

<b>Function</b>	Ion channel gated by extracellular ATP involved in a variety of cellular responses, such as excitatory postsynaptic responses in sensory neurons, neuromuscular junctions (NMJ) formation, hearing, perception of taste and peristalsis. In the inner ear, regulates sound transduction and auditory neurotransmission, outer hair cell electromotility, inner ear gap junctions, and K(+) recycling. Mediates synaptic transmission between neurons and from neurons to smooth muscle.
<b>Involvement in disease</b>	Deafness, autosomal dominant, 41
<b>Sequence similarities</b>	Belongs to the P2X receptor family.
<b>Cellular localization</b>	Cell membrane. Localizes to the apical membranes of hair cells in the organ of Corti.
<b>Form</b>	There are 7 isoforms produced by alternative splicing.

## Images



Anti-P2X2 antibody (ab48864) at 0.6 µg/ml (in 5% skimmed milk/PBS) + Jurkat cell lysate at 10 µg

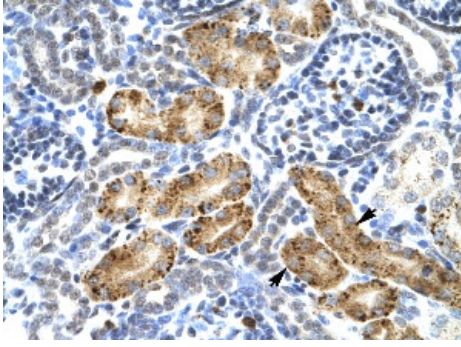
### Secondary

HRP conjugated anti-Rabbit IgG at 1/50000 dilution

**Predicted band size:** 40 kDa

**Observed band size:** 40 kDa

Gel concentration 12%.



ab48864 at 4.0 µg/ml staining Human kidney by immunohistochemistry, paraffin embedded section. Magnification x400. Arrows indicate staining of renal tubule epithelial cells.

Immunohistochemistry (Formalin/PFA-fixed paraffin-embedded sections) - Anti-P2X2 antibody (ab48864)

**Please note:** All products are "FOR RESEARCH USE ONLY AND ARE NOT INTENDED FOR DIAGNOSTIC OR THERAPEUTIC USE"

### Our Abpromise to you: Quality guaranteed and expert technical support

- Replacement or refund for products not performing as stated on the datasheet
- Valid for 12 months from date of delivery
- Response to your inquiry within 24 hours
- We provide support in Chinese, English, French, German, Japanese and Spanish
- Extensive multi-media technical resources to help you
- We investigate all quality concerns to ensure our products perform to the highest standards

If the product does not perform as described on this datasheet, we will offer a refund or replacement. For full details of the Abpromise, please visit <http://www.abcam.com/abpromise> or contact our technical team.

### Terms and conditions

- Guarantee only valid for products bought direct from Abcam or one of our authorized distributors