

Product datasheet

Anti-PSMD14 antibody ab49175

★★★★☆ 2 Abreviews 1 Image

Overview

Product name	Anti-PSMD14 antibody
Description	Rabbit polyclonal to PSMD14
Tested applications	Suitable for: WB, ELISA
Species reactivity	Reacts with: Human Predicted to work with: Mouse, Rat, Cow, Dog, Drosophila melanogaster, Zebrafish
Immunogen	A region within synthetic peptide: MDRLRLGGG MPGLGQGPPT DAPAVDTAEQ VYSSLALLK MLKHGRAGVP, corresponding to N terminal amino acids 1-50 of Human PSMD14 Run BLAST with ExPASy Run BLAST with NCBI
Positive control	HepG2 cell lysate

Properties

Form	Liquid
Storage instructions	Shipped at 4°C. Upon delivery aliquot and store at -20°C. Avoid freeze / thaw cycles.
Storage buffer	Preservative: None Constituents: 2% Sucrose, PBS
Purity	Protein A purified
Clonality	Polyclonal
Isotype	IgG

Applications

Our [Abpromise guarantee](#) covers the use of **ab49175** in the following tested applications.

The application notes include recommended starting dilutions; optimal dilutions/concentrations should be determined by the end user.

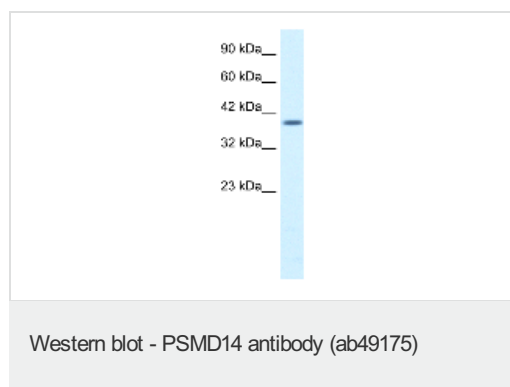
Application	Abreviews	Notes
WB	★★★★☆	Use a concentration of 1.25 µg/ml. Detects a band of approximately 35 kDa (predicted molecular weight: 35 kDa). Good results were obtained when blocked with 5% non-fat dry milk in 0.05% PBS-T.

Application	Abreviews	Notes
ELISA		Use at an assay dependent concentration. Titre using peptide based assay: 1:12500.

Target

Function	Metalloprotease component of the 26S proteasome that specifically cleaves 'Lys-63'-linked polyubiquitin chains. The 26S proteasome is involved in the ATP-dependent degradation of ubiquitinated proteins. The function of the 'Lys-63'-specific deubiquitination of the proteasome is unclear.
Tissue specificity	Widely expressed. Highest levels in heart and skeletal muscle.
Sequence similarities	Belongs to the peptidase M67A family. PSMD14 subfamily. Contains 1 MPN (JAB/Mov34) domain.

Images



Anti-PSMD14 antibody (ab49175) at 1.25 µg/ml + HepG2 cell lysate at 10 µg with 5% skimmed milk in PBS

Secondary

HRP conjugated anti-Rabbit IgG at 1/50000 dilution

Developed using the ECL technique

Predicted band size : 35 kDa

Observed band size : 35 kDa

Please note: All products are "FOR RESEARCH USE ONLY AND ARE NOT INTENDED FOR DIAGNOSTIC OR THERAPEUTIC USE"

Our Abpromise to you: Quality guaranteed and expert technical support

- Replacement or refund for products not performing as stated on the datasheet
- Valid for 12 months from date of delivery
- Response to your inquiry within 24 hours
- We provide support in Chinese, English, French, German, Japanese and Spanish
- Extensive multi-media technical resources to help you
- We investigate all quality concerns to ensure our products perform to the highest standards

If the product does not perform as described on this datasheet, we will offer a refund or replacement. For full details of the Abpromise, please visit <http://www.abcam.com/abpromise> or contact our technical team.

Terms and conditions

- Guarantee only valid for products bought direct from Abcam or one of our authorized distributors