

Product datasheet

Anti-GMEB2 antibody ab50592

1 References 3 Images

Overview

Product name	Anti-GMEB2 antibody
Description	Rabbit polyclonal to GMEB2
Host species	Rabbit
Tested applications	Suitable for: WB, ELISA, IHC-P
Species reactivity	Reacts with: Human Predicted to work with: Mouse, Rat, Cow, Dog
Immunogen	A region within synthetic peptide: GLGPTLQNVA QASPGSSTV TVPAGAAPGP EEHTATIEVA AMAEDHERK, corresponding to C terminal amino acids 482-530 of Human GMEB2 Run BLAST with ExPASy Run BLAST with NCBI
Positive control	HepG2 cell lysate and human kidney tissue.

Properties

Form	Liquid
Storage instructions	Shipped at 4°C. Upon delivery aliquot and store at -20°C. Avoid freeze / thaw cycles.
Storage buffer	Preservative: None Constituents: 2% Sucrose, PBS
Purity	Protein A purified
Clonality	Polyclonal
Isotype	IgG

Applications

Our [Abpromise guarantee](#) covers the use of **ab50592** in the following tested applications.

The application notes include recommended starting dilutions; optimal dilutions/concentrations should be determined by the end user.

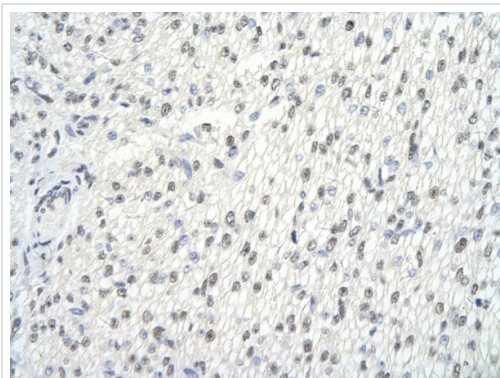
Application	Abreviews	Notes
WB		Use a concentration of 1.25 µg/ml. Detects a band of approximately 61 kDa (predicted molecular weight: 56 kDa). Good results were obtained when blocked with 5% non-fat dry milk in 0.05% PBS-T.

Application	Abreviews	Notes
ELISA		Use at an assay dependent concentration. ELISA titre using peptide based assay: 1/312500.
IHC-P		Use a concentration of 4 - 8 µg/ml.

Target

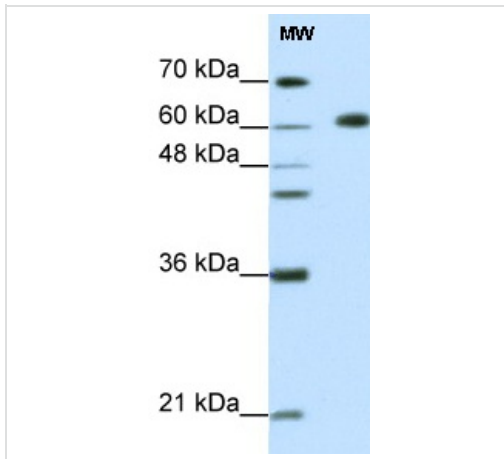
Function	Trans-acting factor that binds to glucocorticoid modulatory elements (GME) present in the TAT (tyrosine aminotransferase) promoter and increases sensitivity to low concentrations of glucocorticoids. Binds also to the transferrin receptor promoter. Essential auxiliary factor for the replication of parvoviruses.
Tissue specificity	Expressed in peripheral blood lymphocytes and fetal liver. Expressed preferentially in reproductive and/or developmentally important cells, such as testis, placenta, bone marrow and fetal tissues.
Sequence similarities	Contains 1 SAND domain.
Cellular localization	Nucleus. Cytoplasm. May be also cytoplasmic.

Images



Immunohistochemistry (Formalin/PFA-fixed paraffin-embedded sections) analysis of human heart tissue labelling GMEB2 with ab50592 at 4.0-8.0µg/ml. Positive staining shown in cardiac cells. Magnification: 400X.

Immunohistochemistry (Formalin/PFA-fixed paraffin-embedded sections) - Anti-GMEB2 antibody (ab50592)



Western blot - GMEB2 antibody (ab50592)

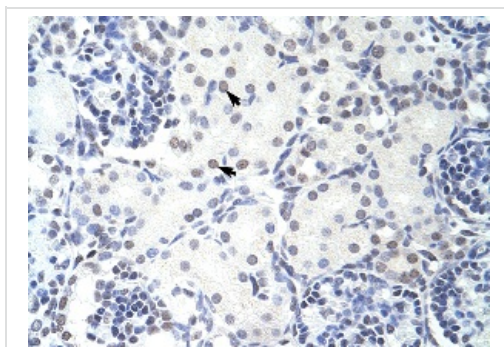
Anti-GMEB2 antibody (ab50592) at 1.25 μ g/ml + HepG2 cell lysate at 10 μ g

Secondary

HRP conjugated anti-Rabbit IgG at 1/50000 dilution

Predicted band size: 56 kDa

Observed band size: 61 kDa



Immunohistochemistry (Paraffin-embedded sections)
- GMEB2 antibody (ab50592)

ab50592 at 4ug/ml dilution staining human GMEB2 in epithelial cells of renal tubule in human kidney by Immunohistochemistry, Paraffin embedded tissue.

ab50592 at 4ug/ml dilution staining human GMEB2 in epithelial cells of renal tubule in human kidney by Immunohistochemistry, Paraffin embedded tissue.

Please note: All products are "FOR RESEARCH USE ONLY AND ARE NOT INTENDED FOR DIAGNOSTIC OR THERAPEUTIC USE"

Our Abpromise to you: Quality guaranteed and expert technical support

- Replacement or refund for products not performing as stated on the datasheet
- Valid for 12 months from date of delivery
- Response to your inquiry within 24 hours
- We provide support in Chinese, English, French, German, Japanese and Spanish
- Extensive multi-media technical resources to help you
- We investigate all quality concerns to ensure our products perform to the highest standards

If the product does not perform as described on this datasheet, we will offer a refund or replacement. For full details of the Abpromise, please visit <http://www.abcam.com/abpromise> or contact our technical team.

Terms and conditions

- Guarantee only valid for products bought direct from Abcam or one of our authorized distributors