

Product datasheet

Anti-Attractin antibody [9H8] ab50864

1 Image

Overview

Product name	Anti-Attractin antibody [9H8]
Description	Mouse monoclonal [9H8] to Attractin
Host species	Mouse
Tested applications	Suitable for: WB, IP
Species reactivity	Reacts with: Human
Immunogen	Protein purified from Human plasma
Positive control	Human Plasma

Properties

Form	Liquid
Storage instructions	Shipped at 4°C. Store at -20°C. Stable for 12 months at -20°C.
Storage buffer	Preservative: None Constituents: 50% Glycerol, PBS
Clonality	Monoclonal
Clone number	9H8
Isotype	IgG1
Light chain type	kappa

Applications

Our [Abpromise guarantee](#) covers the use of **ab50864** in the following tested applications.

The application notes include recommended starting dilutions; optimal dilutions/concentrations should be determined by the end user.

Application	Abreviews	Notes
-------------	-----------	-------

WB

IP

Application notes	IP: Use 1-2ug for 400ul lysate.
--------------------------	---------------------------------

WB: 1/1000. Predicted molecular weight: 158 kDa.

Not yet tested in other applications.

Optimal dilutions/concentrations should be determined by the end user.

Target

Function

Involved in the initial immune cell clustering during inflammatory response and may regulate chemotactic activity of chemokines. May play a role in melanocortin signaling pathways that regulate energy homeostasis and hair color. Low-affinity receptor for agouti (By similarity). Has a critical role in normal myelination in the central nervous system.

Tissue specificity

Isoform 2 is detected in plasma (at protein level). Expressed and secreted by activated T lymphocytes. Expressed at low to moderate levels in peripheral blood leukocytes, spleen, lymph node, tonsil, bone marrow and fetal liver. At very low levels found in thymus. Isoform 2 is the major isoform in peripheral blood leukocytes.

Sequence similarities

Contains 1 C-type lectin domain.
Contains 1 CUB domain.
Contains 1 EGF-like domain.
Contains 6 Kelch repeats.
Contains 2 laminin EGF-like domains.
Contains 4 PSI domains.

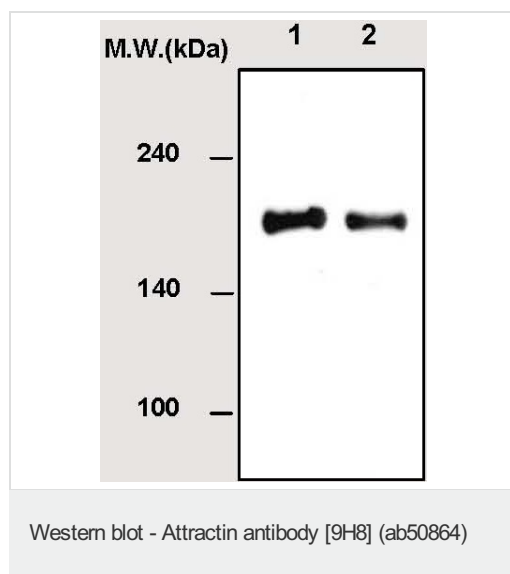
Post-translational modifications

Heavily glycosylated.

Cellular localization

Secreted and Cell membrane.

Images



All lanes : Anti-Attractin antibody [9H8]
(ab50864) at 1/1000 dilution

Lane 1 : Attractin isolated from human plasma

Lane 2 : Human plasma

Predicted band size: 158 kDa

Observed band size: 190 kDa

Please note: All products are "FOR RESEARCH USE ONLY AND ARE NOT INTENDED FOR DIAGNOSTIC OR THERAPEUTIC USE"

Our Abpromise to you: Quality guaranteed and expert technical support

- Replacement or refund for products not performing as stated on the datasheet
- Valid for 12 months from date of delivery
- Response to your inquiry within 24 hours

- We provide support in Chinese, English, French, German, Japanese and Spanish
- Extensive multi-media technical resources to help you
- We investigate all quality concerns to ensure our products perform to the highest standards

If the product does not perform as described on this datasheet, we will offer a refund or replacement. For full details of the Abpromise, please visit <http://www.abcam.com/abpromise> or contact our technical team.

Terms and conditions

- Guarantee only valid for products bought direct from Abcam or one of our authorized distributors