


Product datasheet

Anti-XRCC1 antibody [SPM327], prediluted ab54393

★★★★☆ 1 Abreviews 2 References 2 Images

Overview

<b>Product name</b>	Anti-XRCC1 antibody [SPM327], prediluted
<b>Description</b>	Mouse monoclonal [SPM327] to XRCC1, prediluted
<b>Host species</b>	Mouse
<b>Tested applications</b>	<b>Suitable for:</b> IHC-P
<b>Species reactivity</b>	<b>Reacts with:</b> Mouse, Human <b>Predicted to work with:</b> Rat 
<b>Immunogen</b>	Recombinant full length protein XRCC1 (Human)
<b>Positive control</b>	LS174T, HT29, HeLa cells, normal testis.
<b>General notes</b>	Antibody with sodium azide is stable for 24 months when stored at 2-8°C.

Properties

<b>Form</b>	Prediluted
<b>Storage instructions</b>	Shipped at 4°C. Store at +4°C.
<b>Storage buffer</b>	Preservative: 0.1% Sodium Azide Constituents: BSA, 10mM PBS, pH 7.4
<b>Purity</b>	Protein A purified
<b>Purification notes</b>	Purified from ascites fluid by Protein A.
<b>Clonality</b>	Monoclonal
<b>Clone number</b>	SPM327
<b>Isotype</b>	IgG2b
<b>Light chain type</b>	kappa

Applications

Our [Abpromise guarantee](#) covers the use of **ab54393** in the following tested applications.

The application notes include recommended starting dilutions; optimal dilutions/concentrations should be determined by the end user.

Application	Abreviews	Notes
-------------	-----------	-------

IHC-P



**Application notes**

IHC-P: Ready-to-use for 30 min at RT.  
 Staining of formalin-fixed tissues requires boiling tissue sections in 10mM citrate buffer, pH 6.0 for 10 min followed by cooling at RT for 20 min.

Not yet tested in other applications.  
 Optimal dilutions/concentrations should be determined by the end user.

**Target**

**Function**

Corrects defective DNA strand-break repair and sister chromatid exchange following treatment with ionizing radiation and alkylating agents.

**Sequence similarities**

Contains 2 BRCT domains.

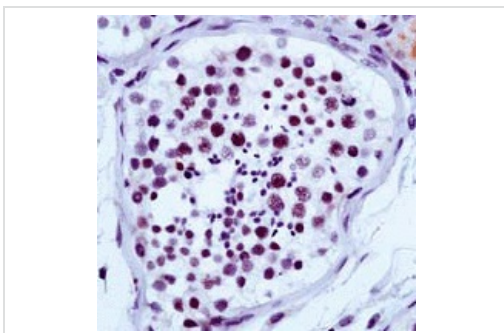
**Post-translational modifications**

Phosphorylation of Ser-371 causes dimer dissociation. Phosphorylation by CK2 promotes interaction with APTX and APLF.  
 Sumoylated.

**Cellular localization**

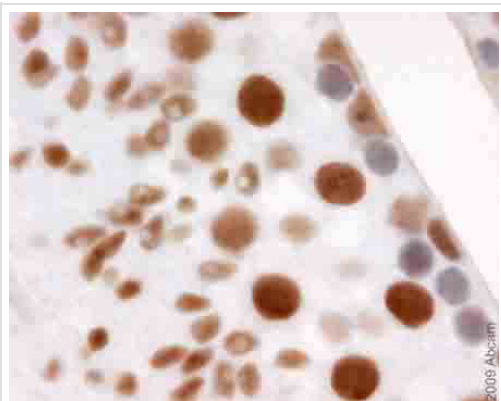
Nucleus. Accumulates at sites of DNA damage.

**Images**



ab54393 (prediluted) staining XRCC1 in human testis by Immunohistochemistry, Formalin-fixed, Paraffin embedded tissue.

Immunohistochemistry (Formalin/PFA-fixed paraffin-embedded sections) - XRCC1 antibody [SPM327], prediluted (ab54393)



ab54393 (prediluted) staining XRCC1 in mouse tissue (testis) by Immunohistochemistry.

Immunohistochemistry (Formalin/PFA-fixed paraffin-embedded sections) - Anti-XRCC1 antibody [SPM327], prediluted (ab54393)  
This image is courtesy of Emad Ahmed

**Please note:** All products are "FOR RESEARCH USE ONLY AND ARE NOT INTENDED FOR DIAGNOSTIC OR THERAPEUTIC USE"

### Our Abpromise to you: Quality guaranteed and expert technical support

- Replacement or refund for products not performing as stated on the datasheet
- Valid for 12 months from date of delivery
- Response to your inquiry within 24 hours
- We provide support in Chinese, English, French, German, Japanese and Spanish
- Extensive multi-media technical resources to help you
- We investigate all quality concerns to ensure our products perform to the highest standards

If the product does not perform as described on this datasheet, we will offer a refund or replacement. For full details of the Abpromise, please visit <http://www.abcam.com/abpromise> or contact our technical team.

### Terms and conditions

- Guarantee only valid for products bought direct from Abcam or one of our authorized distributors