

Product datasheet

Anti-ARVCF antibody ab54816

[2 Images](#)

Overview

| | |
|----------------------------|--|
| Product name | Anti-ARVCF antibody |
| Description | Mouse monoclonal to ARVCF |
| Host species | Mouse |
| Tested applications | Suitable for: WB, IHC-P |
| Species reactivity | Reacts with: Human |
| Immunogen | Recombinant fragment: LSPGGFDDST LPLVDKSLEG EKTGSRDVIP MDALGPDGYS TVDRRERRPR GASSAGEASE KEPLKLDPSR KAPPPGPSRP AVRLVDAVGD AKPQPVDSWV , corresponding to amino acids 863-963 of Human ARVCF Run BLAST with ExPASy Run BLAST with NCBI |

Properties

| | |
|-----------------------------|---|
| Form | Liquid |
| Storage instructions | Shipped at 4°C. Upon delivery aliquot and store at -20°C or -80°C. Avoid repeated freeze / thaw cycles. |
| Storage buffer | Preservative: None PBS, pH 7.2 |
| Purity | Protein G purified |
| Clonality | Monoclonal |
| Isotype | IgG1 |
| Light chain type | kappa |

Applications

Our [Abpromise guarantee](#) covers the use of **ab54816** in the following tested applications.

The application notes include recommended starting dilutions; optimal dilutions/concentrations should be determined by the end user.

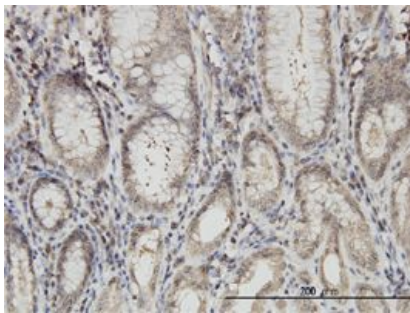
| Application | Abreviews | Notes |
|-------------|-----------|--|
| WB | | Use a concentration of 1 - 5 µg/ml. Predicted molecular weight: 105 kDa. |

| Application | Abreviews | Notes |
|-------------|-----------|---------------------------------|
| IHC-P | | Use a concentration of 3 µg/ml. |

Target

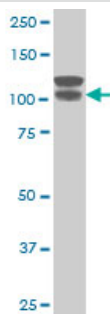
| | |
|------------------------------|---|
| Function | Involved in protein-protein interactions at adherens junctions. |
| Tissue specificity | Found in all the examined tissues including heart, brain, liver and kidney. Found at low level in lung. |
| Sequence similarities | Belongs to the beta-catenin family. Contains 10 ARM repeats. |

Images



ARVCF antibody (ab54816) used in immunohistochemistry at 3ug/ml on formalin fixed and paraffin embedded human stomach.

IHC-P - ARVCF antibody (ab54816)



ARVCF antibody (ab54816) at 1ug/lane + A-431 cell lysate at 25ug/lane.

Western blot - ARVCF antibody (ab54816)

Please note: All products are "FOR RESEARCH USE ONLY AND ARE NOT INTENDED FOR DIAGNOSTIC OR THERAPEUTIC USE"

Our Abpromise to you: Quality guaranteed and expert technical support

- Replacement or refund for products not performing as stated on the datasheet
- Valid for 12 months from date of delivery
- Response to your inquiry within 24 hours

- We provide support in Chinese, English, French, German, Japanese and Spanish
- Extensive multi-media technical resources to help you
- We investigate all quality concerns to ensure our products perform to the highest standards

If the product does not perform as described on this datasheet, we will offer a refund or replacement. For full details of the Abpromise, please visit <http://www.abcam.com/abpromise> or contact our technical team.

Terms and conditions

- Guarantee only valid for products bought direct from Abcam or one of our authorized distributors