

## Product datasheet

# Anti-MRP6 antibody ab54826

[1 References](#) [1 Image](#)

### Overview

<b>Product name</b>	Anti-MRP6 antibody
<b>Description</b>	Mouse monoclonal to MRP6
<b>Host species</b>	Mouse
<b>Tested applications</b>	<b>Suitable for:</b> ELISA, WB
<b>Species reactivity</b>	<b>Reacts with:</b> Recombinant fragment <b>Predicted to work with:</b> Human
<b>Immunogen</b>	Recombinant fragment, corresponding to amino acids 831-931 of Human MRP6 with tag (NP_001162).
<b>Positive control</b>	Recombinant fragment of human MRP6.

### Properties

<b>Form</b>	Liquid
<b>Storage instructions</b>	Shipped at 4°C. Upon delivery aliquot. Store at -20°C or -80°C. Avoid freeze / thaw cycle.
<b>Storage buffer</b>	Preservative: None Constituents: 1X PBS, pH 7.2
<b>Purity</b>	Protein A purified
<b>Clonality</b>	Monoclonal
<b>Isotype</b>	IgG
<b>Light chain type</b>	kappa

### Applications

Our [Abpromise guarantee](#) covers the use of **ab54826** in the following tested applications.

The application notes include recommended starting dilutions; optimal dilutions/concentrations should be determined by the end user.

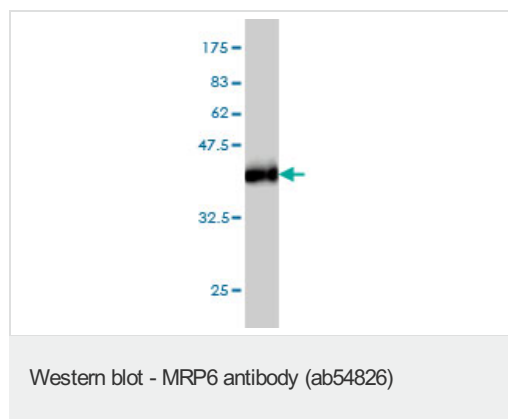
Application	Abreviews	Notes
ELISA		Use at an assay dependent dilution. Detection limit for recombinant tagged ABCC6 is approximately 0.03ng/ml if used as a capture antibody.

Application	Abreviews	Notes
WB		1/500 - 1/1000. Detects a band of approximately 37 kDa (predicted molecular weight: 164 kDa).

## Target

<b>Function</b>	May participate directly in the active transport of drugs into subcellular organelles or influence drug distribution indirectly. Transports glutathione conjugates as leukotriene-c4 (LTC4) and N-ethylmaleimide S-glutathione (NEM-GS).
<b>Tissue specificity</b>	Expressed in kidney and liver. Very low expression in other tissues.
<b>Involvement in disease</b>	Defects in ABCC6 are the cause of pseudoxanthoma elasticum (PXE) [MIM:264800]. PXE is a disorder characterized by calcification of elastic fibers in skin, arteries and retina that results in dermal lesions with associated laxity and loss of elasticity, arterial insufficiency and retinal hemorrhages leading to macular degeneration. PXE is caused in the overwhelming majority of cases by homozygous or compound heterozygous mutations in the ABCC6 gene (autosomal recessive PXE). Individuals carrying heterozygous mutations express limited manifestations of the pseudoxanthoma elasticum phenotype (autosomal dominant PXE).
<b>Sequence similarities</b>	Belongs to the ABC transporter superfamily. ABCC family. Conjugate transporter (TC 3.A.1.208) subfamily. Contains 2 ABC transmembrane type-1 domains. Contains 2 ABC transporter domains.
<b>Cellular localization</b>	Membrane. Localized to the basolateral membrane.

## Images



Anti-MRP6 antibody (ab54826) at 1/500 dilution + Recombinant fragment of human MRP6 at 0.2 µg

### Secondary

Goat Anti-Mouse IgG (H&L)-HRP at 1/5000 dilution

**Predicted band size:** 164 kDa

**Observed band size:** 37 kDa

Western blot against tagged recombinant protein immunogen using ab54826 antibody at 1/500 dilution. Predicted band size of immunogen is 164kDa.

### **Our Abpromise to you: Quality guaranteed and expert technical support**

---

- Replacement or refund for products not performing as stated on the datasheet
- Valid for 12 months from date of delivery
- Response to your inquiry within 24 hours
  
- We provide support in Chinese, English, French, German, Japanese and Spanish
- Extensive multi-media technical resources to help you
- We investigate all quality concerns to ensure our products perform to the highest standards

If the product does not perform as described on this datasheet, we will offer a refund or replacement. For full details of the Abpromise, please visit <http://www.abcam.com/abpromise> or contact our technical team.

### **Terms and conditions**

---

- Guarantee only valid for products bought direct from Abcam or one of our authorized distributors