

Product datasheet

Anti-IRF2 antibody ab55333

KO VALIDATED

[4 Images](#)

Overview

| | |
|----------------------------|---|
| Product name | Anti-IRF2 antibody |
| Description | Mouse monoclonal to IRF2 |
| Host species | Mouse |
| Tested applications | Suitable for: WB, IHC-P, ICC/IF |
| Species reactivity | Reacts with: Human |
| Immunogen | Recombinant fragment: MSELVPLQIS PVSSYAESET TDSVPSDEES AEGRPHWRKR NIEGKQYLSN MGTRGSYLLP GMAFVTSNK PDLQVTIKKEE SNPVPYNSSW PPFQDLPLSS , corresponding to amino acids 216-316 of Human IRF2 Run BLAST with ExPASy Run BLAST with NCBI |
| Positive control | <div style="border: 1px solid #ccc; padding: 5px; display: inline-block;"> <p>Purchase matching WB positive control: Recombinant Human IRF2 protein ></p> </div> |

Properties

| | |
|-----------------------------|---|
| Form | Liquid |
| Storage instructions | Shipped at 4°C. Upon delivery aliquot and store at -20°C or -80°C. Avoid repeated freeze / thaw cycles. |
| Storage buffer | Preservative: None PBS, pH 7.2 |
| Purity | Protein G purified |
| Clonality | Monoclonal |
| Isotype | IgG2a |
| Light chain type | kappa |

Applications

Our [Abpromise guarantee](#) covers the use of **ab55333** in the following tested applications.

The application notes include recommended starting dilutions; optimal dilutions/concentrations should be determined by the end user.

| Application | Abreviews | Notes |
|-------------|-----------|---|
| WB | | Use a concentration of 1 - 5 µg/ml. Predicted molecular weight: 39 kDa. |
| IHC-P | | Use a concentration of 3 µg/ml. |
| ICC/IF | | Use a concentration of 10 µg/ml. |

Target

Function

Specifically binds to the upstream regulatory region of type I IFN and IFN-inducible MHC class I genes (the interferon consensus sequence (ICS)) and represses those genes. Also acts as an activator for several genes including H4 and IL7. Constitutively binds to the ISRE promoter to activate IL7. Involved in cell cycle regulation through binding the site II (HiNF-M) promoter region of H4 and activating transcription during cell growth. Antagonizes IRF1 transcriptional activation.

Tissue specificity

Expressed throughout the epithelium of the colon. Also expressed in lamina propria.

Sequence similarities

Belongs to the IRF family.
Contains 1 IRF tryptophan pentad repeat DNA-binding domain.

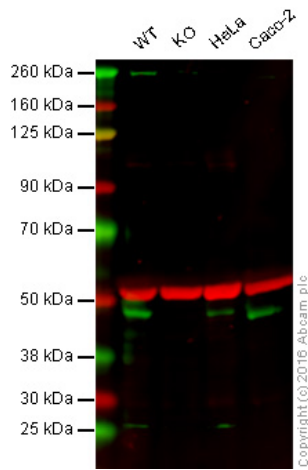
Post-translational modifications

Acetylated by CBP/ p300 during cell-growth. Acetylation on Lys-75 is required for stimulation of H4 promoter activity.
The major sites of sumoylation are Lys-137 and Lys-293. Sumoylation by SUMO1 increases its transcriptional repressor activity on IRF1 and diminishes its ability to activate ISRE and H4 promoter.

Cellular localization

Nucleus.

Images



Western blot - Anti-IRF2 antibody (ab55333)

Lane 1: Wild type HAP1 whole cell lysate (20 µg)

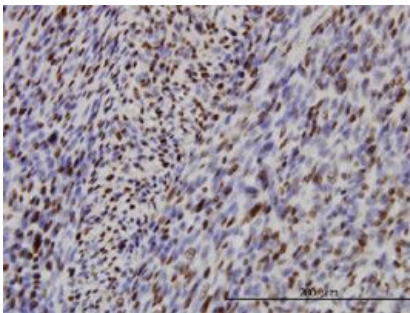
Lane 2: IRF2 knockout HAP1 whole cell lysate (20 µg)

Lane 3: HeLa whole cell lysate (20 µg)

Lane 4: CACO2 whole cell lysate (20 µg)

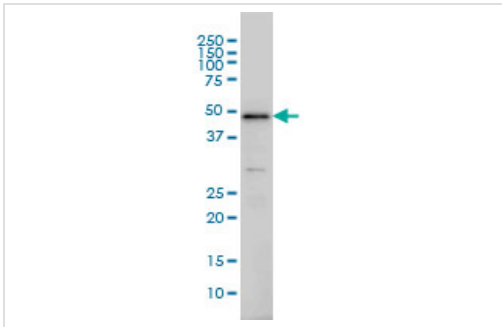
Lanes 1 - 4: Merged signal (red and green). Green - ab55333 observed at 48 kDa. Red - loading control, [ab176560](#), observed at 50 kDa.

ab55333 was shown to specifically react with IRF2 when IRF2 knockout samples were used. Wild-type and IRF2 knockout samples were subjected to SDS-PAGE. Ab55333 and [ab176560](#) (Rabbit anti alpha Tubulin loading control) were incubated overnight at 4°C at 1 µg/ml and 1/10000 dilution respectively. Blots were developed with 800CW Goat anti Rabbit and 680CW Goat anti Mouse secondary antibodies at 1/10000 dilution for 1 hour at room temperature before imaging.



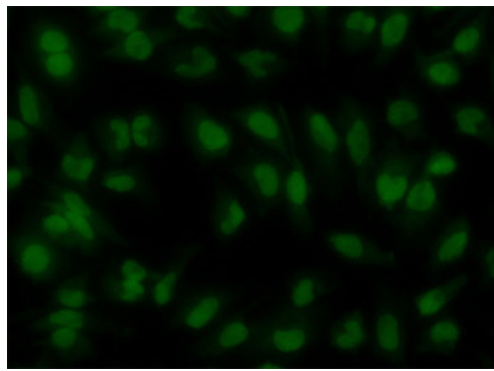
IHC-P - IRF2 antibody (ab55333)

IRF2 antibody (ab55333) used in immunohistochemistry at 3µg/ml on formalin fixed and paraffin embedded human leiomyosarcoma.



Western blot - IRF2 antibody (ab55333)

IRF2 antibody (ab55333) at 1ug/lane + HeLa cell lysate at 25ug/lane.



Immunocytochemistry/ Immunofluorescence-IRF2 antibody(ab55333)

ab55333 at 10 ug/ml staining IRF2 in human Hella cells by Immunocytochemistry/ Immunofluorescence.

Please note: All products are "FOR RESEARCH USE ONLY AND ARE NOT INTENDED FOR DIAGNOSTIC OR THERAPEUTIC USE"

Our Abpromise to you: Quality guaranteed and expert technical support

- Replacement or refund for products not performing as stated on the datasheet
- Valid for 12 months from date of delivery
- Response to your inquiry within 24 hours
- We provide support in Chinese, English, French, German, Japanese and Spanish
- Extensive multi-media technical resources to help you
- We investigate all quality concerns to ensure our products perform to the highest standards

If the product does not perform as described on this datasheet, we will offer a refund or replacement. For full details of the Abpromise, please visit <http://www.abcam.com/abpromise> or contact our technical team.

Terms and conditions

- Guarantee only valid for products bought direct from Abcam or one of our authorized distributors