

Product datasheet

Anti-MTM1 antibody ab55532

2 Images

Overview

Product name	Anti-MTM1 antibody
Description	Mouse monoclonal to MTM1
Tested applications	Suitable for: IHC-P, WB
Species reactivity	Reacts with: Human
Immunogen	Recombinant fragment: MASASTSKYN SHSLENESIK RTSRDGVNRD LTEAVPRLPG ETLITDKEVI YICPFGPIK GRVYITNYRL YLRSLETDSS LILDVPLGVI SRIEKMGGAT , corresponding to amino acids 1-100 of Human MTM1 Run BLAST with ExPASy Run BLAST with NCBI

Properties

Form	Liquid
Storage instructions	Shipped at 4°C. Upon delivery aliquot and store at -20°C or -80°C. Avoid repeated freeze / thaw cycles.
Storage buffer	Preservative: None PBS, pH 7.2
Purity	Protein G purified
Clonality	Monoclonal
Isotype	IgG2a
Light chain type	kappa

Applications

Our [Abpromise guarantee](#) covers the use of **ab55532** in the following tested applications.

The application notes include recommended starting dilutions; optimal dilutions/concentrations should be determined by the end user.

Application	Abreviews	Notes
IHC-P		
WB		

Application notes

WB: Use at a concentration of 1-5 µg/ml.

IHC-P: Use at a concentration of 3 µg/ml.

This antibody has only been tested in WB against the recombinant fragment used as immunogen. We have no data on the detection of endogenous protein.

Not yet tested in other applications.

Optimal dilutions/concentrations should be determined by the end user.

Target

Function

Lipid phosphatase which dephosphorylates phosphatidylinositol 3-monophosphate (PI3P) and phosphatidylinositol 3,5-bisphosphate (PI(3,5)P2). Has also been shown to dephosphorylate phosphotyrosine- and phosphoserine-containing peptides. Negatively regulates EGFR degradation through regulation of EGFR trafficking from the late endosome to the lysosome. Plays a role in vacuolar formation and morphology. Regulates desmin intermediate filament assembly and architecture. Plays a role in mitochondrial morphology and positioning. Required for skeletal muscle maintenance but not for myogenesis.

Involvement in disease

Defects in MTM1 are the cause of centronuclear myopathy X-linked (XCNM) [MIM:310400]; also known as X-linked myotubular myopathy (XLMTM) or myotubular myopathy type 1 (MTM1). Centronuclear myopathies are congenital muscle disorders characterized by progressive muscular weakness and wasting involving mainly limb girdle, trunk, and neck muscles. It may also affect distal muscles. Weakness may be present during childhood or adolescence or may not become evident until the third decade of life. Ptosis is a frequent clinical feature. The most prominent histopathologic features include high frequency of centrally located nuclei in muscle fibers not secondary to regeneration, radial arrangement of sarcoplasmic strands around the central nuclei, and predominance and hypotrophy of type 1 fibers.

Sequence similarities

Belongs to the protein-tyrosine phosphatase family. Non-receptor class myotubularin subfamily. Contains 1 GRAM domain. Contains 1 myotubularin phosphatase domain.

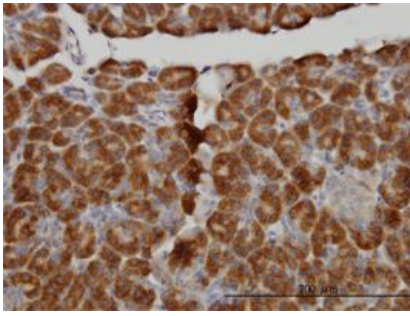
Domain

The GRAM domain mediates binding to PI(3,5)P2 and, with lower affinity, to other phosphoinositides.

Cellular localization

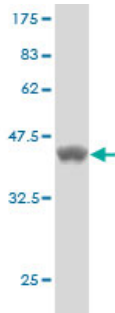
Cytoplasm. Cell membrane. Cell projection > filopodium. Cell projection > ruffle. Late endosome. Localizes as a dense cytoplasmic network. Also localizes to the plasma membrane, including plasma membrane extensions such as filopodia and ruffles. Predominantly located in the cytoplasm following interaction with MTMR12. Recruited to the late endosome following EGF stimulation.

Images



IHC-P - MTM1 antibody (ab55532)

MTM1 antibody (ab55532) used in immunohistochemistry at 3ug/ml on formalin fixed and paraffin embedded human pancreas.



Western blot - MTM1 antibody (ab55532)

Western blot against tagged recombinant protein immunogen using ab55532 MTM1 antibody at 1ug/ml. Predicted band size of immunogen is 34 kDa

Please note: All products are "FOR RESEARCH USE ONLY AND ARE NOT INTENDED FOR DIAGNOSTIC OR THERAPEUTIC USE"

Our Abpromise to you: Quality guaranteed and expert technical support

- Replacement or refund for products not performing as stated on the datasheet
- Valid for 12 months from date of delivery
- Response to your inquiry within 24 hours
- We provide support in Chinese, English, French, German, Japanese and Spanish
- Extensive multi-media technical resources to help you
- We investigate all quality concerns to ensure our products perform to the highest standards

If the product does not perform as described on this datasheet, we will offer a refund or replacement. For full details of the Abpromise, please visit <http://www.abcam.com/abpromise> or contact our technical team.

Terms and conditions

- Guarantee only valid for products bought direct from Abcam or one of our authorized distributors