

Product datasheet

Anti-C21orf33 antibody ab56459

[2 Images](#)

Overview

Product name	Anti-C21orf33 antibody
Description	Mouse monoclonal to C21orf33
Host species	Mouse
Tested applications	Suitable for: WB, IHC-P
Species reactivity	Reacts with: Human
Immunogen	Recombinant fragment: RGVEVTVGHE QEEGGKWPYA GTAEAIALG AKHCVKEVVE AHVDQKNKVV TTPAFMCETA LHYHDGIGA MVRKVLELTG K, corresponding to amino acids 188-269 of Human C21orf33 Run BLAST with ExPASy Run BLAST with NCBI

Properties

Form	Liquid
Storage instructions	Shipped at 4°C. Upon delivery aliquot and store at -20°C or -80°C. Avoid repeated freeze / thaw cycles.
Storage buffer	Preservative: None PBS, pH 7.2
Purity	Protein G purified
Clonality	Monoclonal
Isotype	IgG1
Light chain type	kappa

Applications

Our [Abpromise guarantee](#) covers the use of **ab56459** in the following tested applications.

The application notes include recommended starting dilutions; optimal dilutions/concentrations should be determined by the end user.

Application	Abreviews	Notes
WB		Use a concentration of 1 - 5 µg/ml. Predicted molecular weight: 28 kDa.

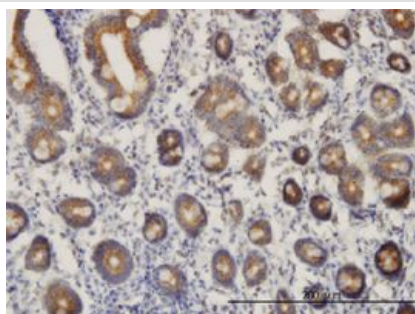
Application	Abreviews	Notes
IHC-P		Use a concentration of 3 µg/ml.

Target

Relevance C21orf33 encodes a 268 amino acid protein which shares significant homology with Escherichia coli anti-sigma cross-reacting protein (SCRP-27A/SCR27) and zebrafish Es1 protein. The specific function of the C21orf33 protein is not known.

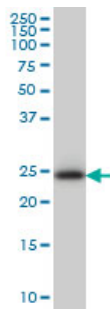
Cellular localization Mitochondrial

Images



C21orf33 antibody (ab56459) used in immunohistochemistry at 3ug/ml on formalin fixed and paraffin embedded human small Intestine.

IHC-P - C21orf33 antibody (ab56459)



C21orf33 antibody (ab56459) at 1ug/lane + HeLa cell lysate at 25ug/lane.

Western blot - C21orf33 antibody (ab56459)

Please note: All products are "FOR RESEARCH USE ONLY AND ARE NOT INTENDED FOR DIAGNOSTIC OR THERAPEUTIC USE"

Our Abpromise to you: Quality guaranteed and expert technical support

- Replacement or refund for products not performing as stated on the datasheet
- Valid for 12 months from date of delivery
- Response to your inquiry within 24 hours
- We provide support in Chinese, English, French, German, Japanese and Spanish

- Extensive multi-media technical resources to help you
- We investigate all quality concerns to ensure our products perform to the highest standards

If the product does not perform as described on this datasheet, we will offer a refund or replacement. For full details of the Abpromise, please visit <http://www.abcam.com/abpromise> or contact our technical team.

Terms and conditions

- Guarantee only valid for products bought direct from Abcam or one of our authorized distributors