

## Product datasheet

# Anti-NOLC1 antibody ab56489

1 Image

### Overview

<b>Product name</b>	Anti-NOLC1 antibody
<b>Description</b>	Mouse monoclonal to NOLC1
<b>Tested applications</b>	<b>Suitable for:</b> WB
<b>Species reactivity</b>	<b>Reacts with:</b> Human
<b>Immunogen</b>	Recombinant fragment, corresponding to amino acids 590-700 of Human NOLC1

### Properties

<b>Form</b>	Liquid
<b>Storage instructions</b>	Shipped at 4°C. Upon delivery aliquot and store at -20°C or -80°C. Avoid repeated freeze / thaw cycles.
<b>Storage buffer</b>	Preservative: None PBS, pH 7.2
<b>Purity</b>	Protein G purified
<b>Clonality</b>	Monoclonal
<b>Isotype</b>	IgG3
<b>Light chain type</b>	kappa

### Applications

Our [Abpromise guarantee](#) covers the use of **ab56489** in the following tested applications.

The application notes include recommended starting dilutions; optimal dilutions/concentrations should be determined by the end user.

Application	Abreviews	Notes
WB		

**Application notes** WB: Use at a concentration of 1-5 µg/ml.

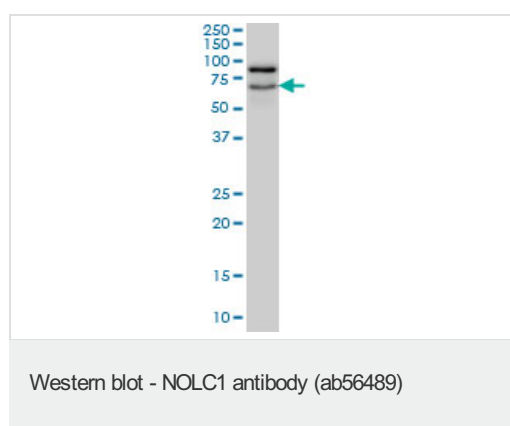
Not yet tested in other applications.

Optimal dilutions/concentrations should be determined by the end user.

## Target

<b>Function</b>	Related to nucleogenesis, may play a role in the maintenance of the fundamental structure of the fibrillar center and dense fibrillar component in the nucleolus. It has intrinsic GTPase and ATPase activities. May play an important role in transcription catalyzed by RNA polymerase I.
<b>Sequence similarities</b>	Contains 1 LisH domain.
<b>Post-translational modifications</b>	Undergoes rapid and massive phosphorylation/dephosphorylation cycles on CK2 and PKC sites. There is evidence suggesting that CDK1 kinase phosphorylates p130 at the M-phase.
<b>Cellular localization</b>	Nucleus > nucleolus. Cytoplasm. Shuttles between the nucleolus and the cytoplasm. At telophase it begins to assemble into granular-like pre-nucleolar bodies which are subsequently relocated to nucleoli at the early G1-phase.

## Images



**Predicted band size : 74 kDa**  
NOLC1 antibody (ab56489) at 1ug/lane +  
HepG2 cell lysate at 25ug/lane.

**Please note:** All products are "FOR RESEARCH USE ONLY AND ARE NOT INTENDED FOR DIAGNOSTIC OR THERAPEUTIC USE"

## Our Abpromise to you: Quality guaranteed and expert technical support

- Replacement or refund for products not performing as stated on the datasheet
- Valid for 12 months from date of delivery
- Response to your inquiry within 24 hours
- We provide support in Chinese, English, French, German, Japanese and Spanish
- Extensive multi-media technical resources to help you
- We investigate all quality concerns to ensure our products perform to the highest standards

If the product does not perform as described on this datasheet, we will offer a refund or replacement. For full details of the Abpromise, please visit <http://www.abcam.com/abpromise> or contact our technical team.

## Terms and conditions

- Guarantee only valid for products bought direct from Abcam or one of our authorized distributors