

Product datasheet

Anti-LASS6 antibody ab56582

1 References 2 Images

Overview

Product name	Anti-LASS6 antibody
Description	Mouse monoclonal to LASS6
Host species	Mouse
Tested applications	Suitable for: WB, IHC-P
Species reactivity	Reacts with: Human
Immunogen	Recombinant fragment: PCAIALNIQA NGPQIAPPNA ILEKVFTAIT KHPDEKRLEG LSKQLDWDVR SIQRWFRQRR NQEKPSTLTR , corresponding to amino acids 62-132 of Human LASS6 Run BLAST with ExPASy Run BLAST with NCBI

Properties

Form	Liquid
Storage instructions	Shipped at 4°C. Upon delivery aliquot and store at -20°C or -80°C. Avoid repeated freeze / thaw cycles.
Storage buffer	Preservative: None PBS, pH 7.2
Purity	Protein G purified
Clonality	Monoclonal
Isotype	IgG2a
Light chain type	kappa

Applications

Our [Abpromise guarantee](#) covers the use of **ab56582** in the following tested applications.

The application notes include recommended starting dilutions; optimal dilutions/concentrations should be determined by the end user.

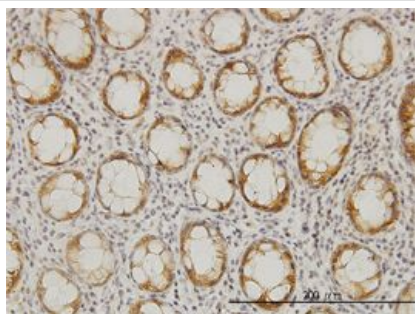
Application	Abreviews	Notes
WB		Use a concentration of 1 - 5 µg/ml. Predicted molecular weight: 45 kDa.

Application	Abreviews	Notes
IHC-P		Use a concentration of 3 µg/ml.

Target

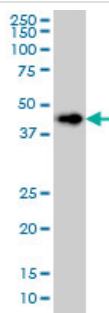
Function	May be involved in sphingolipid synthesis or its regulation.
Sequence similarities	Contains 1 homeobox DNA-binding domain. Contains 1 TLC (TRAM/LAG1/CLN8) domain.
Post-translational modifications	Glycosylation on Asn-18 is not necessary for function.
Cellular localization	Nucleus membrane. Endoplasmic reticulum membrane.

Images



LASS6 antibody (ab56582) used in immunohistochemistry at 3ug/ml on formalin fixed and paraffin embedded human colon.

IHC-P - LASS6 antibody (ab56582)



LASS6 antibody (ab56582) at 1ug/lane + HeLa cell lysate at 25ug/lane.

Western blot - LASS6 antibody (ab56582)

Please note: All products are "FOR RESEARCH USE ONLY AND ARE NOT INTENDED FOR DIAGNOSTIC OR THERAPEUTIC USE"

Our Abpromise to you: Quality guaranteed and expert technical support

- Replacement or refund for products not performing as stated on the datasheet
- Valid for 12 months from date of delivery

- Response to your inquiry within 24 hours
- We provide support in Chinese, English, French, German, Japanese and Spanish
- Extensive multi-media technical resources to help you
- We investigate all quality concerns to ensure our products perform to the highest standards

If the product does not perform as described on this datasheet, we will offer a refund or replacement. For full details of the Abpromise, please visit <http://www.abcam.com/abpromise> or contact our technical team.

Terms and conditions

- Guarantee only valid for products bought direct from Abcam or one of our authorized distributors