

## Product datasheet

# Anti-GMEB1 antibody ab56973

[2 Images](#)

### Overview

<b>Product name</b>	Anti-GMEB1 antibody
<b>Description</b>	Mouse monoclonal to GMEB1
<b>Host species</b>	Mouse
<b>Tested applications</b>	<b>Suitable for:</b> WB, IHC-P
<b>Species reactivity</b>	<b>Reacts with:</b> Human
<b>Immunogen</b>	Recombinant fragment: TAMQDGSTLG NMTTMVSPVE LVAMESGLTS AIQAVESTSE DGQTIIEIDP APDPEAEDTE GKAVILETEL RTEEKVVAEM EEHQHQVHNV ENVLED, corresponding to amino acids 467-564 of Human GMEB1 <a href="#">Run BLAST with ExPASy</a> <a href="#">Run BLAST with NCBI</a>

### Properties

<b>Form</b>	Liquid
<b>Storage instructions</b>	Shipped at 4°C. Upon delivery aliquot and store at -20°C or -80°C. Avoid repeated freeze / thaw cycles.
<b>Storage buffer</b>	Preservative: None PBS, pH 7.2
<b>Purity</b>	Protein G purified
<b>Clonality</b>	Monoclonal
<b>Isotype</b>	IgG2a
<b>Light chain type</b>	kappa

### Applications

Our [Abpromise guarantee](#) covers the use of **ab56973** in the following tested applications.

The application notes include recommended starting dilutions; optimal dilutions/concentrations should be determined by the end user.

Application	Abreviews	Notes
WB		Use a concentration of 1 - 5 µg/ml. Predicted molecular weight: 63 kDa.

Application	Abreviews	Notes
IHC-P		Use a concentration of 3 µg/ml.

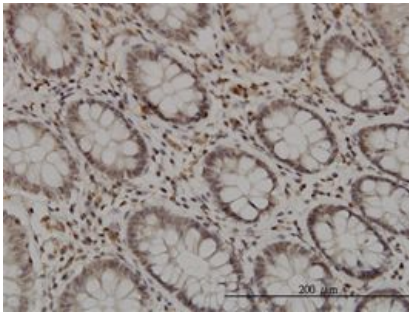
## Target

**Function** Trans-acting factor that binds to glucocorticoid modulatory elements (GME) present in the TAT (tyrosine aminotransferase) promoter and increases sensitivity to low concentrations of glucocorticoids. Binds also to the transferrin receptor promoter. Essential auxiliary factor for the replication of parvoviruses.

**Sequence similarities** Contains 1 SAND domain.

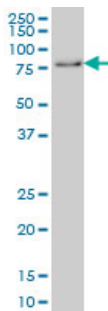
**Cellular localization** Nucleus. Cytoplasm. May be also cytoplasmic.

## Images



GMEB1 antibody (ab56973) used in immunohistochemistry at 3ug/ml on formalin fixed and paraffin embedded human colon.

IHC-P - GMEB1 antibody (ab56973)



GMEB1 antibody (ab56973) at 1ug/lane + HeLa cell lysate at 25ug/lane.

Western blot - GMEB1 antibody (ab56973)

**Please note:** All products are "FOR RESEARCH USE ONLY AND ARE NOT INTENDED FOR DIAGNOSTIC OR THERAPEUTIC USE"

## Our Abpromise to you: Quality guaranteed and expert technical support

- Replacement or refund for products not performing as stated on the datasheet
- Valid for 12 months from date of delivery

- Response to your inquiry within 24 hours
- We provide support in Chinese, English, French, German, Japanese and Spanish
- Extensive multi-media technical resources to help you
- We investigate all quality concerns to ensure our products perform to the highest standards

If the product does not perform as described on this datasheet, we will offer a refund or replacement. For full details of the Abpromise, please visit <http://www.abcam.com/abpromise> or contact our technical team.

### **Terms and conditions**

---

- Guarantee only valid for products bought direct from Abcam or one of our authorized distributors