

## Product datasheet

# Anti-Nucleoporin p62 antibody ab56982

★ ★ ★ ☆ ☆
[1 Abreviews](#)
[1 References](#)
[1 Image](#)

### Overview

<b>Product name</b>	Anti-Nucleoporin p62 antibody
<b>Description</b>	Mouse monoclonal to Nucleoporin p62
<b>Host species</b>	Mouse
<b>Tested applications</b>	<b>Suitable for:</b> WB
<b>Species reactivity</b>	<b>Reacts with:</b> Human
<b>Immunogen</b>	Recombinant fragment: LQHADEEREK TYKLAENIDA QLKRMAQDLK DIIHLNTSG APADTSDPLQ QICKILNAHM DSLQWIDQNS ALLQRKVEEV TKVCEGRRKE QERSFRITFD , corresponding to amino acids 423-523 of Human Nucleoporin p62 <a href="#">Run BLAST with ExPASy</a> <a href="#">Run BLAST with NCBI</a>

### Properties

<b>Form</b>	Liquid
<b>Storage instructions</b>	Shipped at 4°C. Upon delivery aliquot and store at -20°C or -80°C. Avoid repeated freeze / thaw cycles.
<b>Storage buffer</b>	Preservative: None PBS, pH 7.2
<b>Purity</b>	Protein G purified
<b>Clonality</b>	Monoclonal
<b>Isotype</b>	IgG2b
<b>Light chain type</b>	kappa

### Applications

Our [Abpromise guarantee](#) covers the use of **ab56982** in the following tested applications.

The application notes include recommended starting dilutions; optimal dilutions/concentrations should be determined by the end user.

Application	Abreviews	Notes
WB	<span>★ ★ ★ ☆ ☆</span>	Use a concentration of 1 - 5 µg/ml. Predicted molecular weight: 53 kDa.

## Target

---

### Relevance

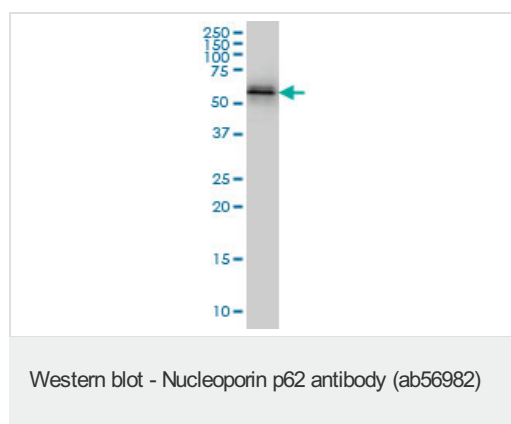
The nuclear pore complex is a structure that extends across the nuclear envelope and regulates the flow of macromolecules between the cytoplasm and the nucleus. Nucleoporins are the main components of the nuclear pore complex in eukaryotic cells. Nup 62 is localized to the nuclear pore central plug. This protein associates with the importin alpha/beta complex which is involved in the import of proteins containing nuclear localization signals. There are multiple transcript variants of this gene, however, they encode a single protein isoform. This protein undergoes post-translational modifications. It contains about 10 N-acetylglucosamine side chain sites.

### Cellular localization

Nucleus; nuclear pore complex. Cytoplasm; cytoskeleton; spindle pole. Note: Central region of the nuclear pore, within the transporter. During mitotic cell division, it associates with the poles of the mitotic spindle.

## Images

---



Nucleoporin p62 antibody (ab56982) at  
1ug/lane + HeLa cell lysate at 25ug/lane.

**Please note:** All products are "FOR RESEARCH USE ONLY AND ARE NOT INTENDED FOR DIAGNOSTIC OR THERAPEUTIC USE"

## Our Abpromise to you: Quality guaranteed and expert technical support

---

- Replacement or refund for products not performing as stated on the datasheet
- Valid for 12 months from date of delivery
- Response to your inquiry within 24 hours
- We provide support in Chinese, English, French, German, Japanese and Spanish
- Extensive multi-media technical resources to help you
- We investigate all quality concerns to ensure our products perform to the highest standards

If the product does not perform as described on this datasheet, we will offer a refund or replacement. For full details of the Abpromise, please visit <http://www.abcam.com/abpromise> or contact our technical team.

## Terms and conditions

---

- Guarantee only valid for products bought direct from Abcam or one of our authorized distributors