

Product datasheet

Anti-CMAS antibody ab57454

2 Images

Overview

<b>Product name</b>	Anti-CMAS antibody
<b>Description</b>	Mouse monoclonal to CMAS
<b>Host species</b>	Mouse
<b>Tested applications</b>	<b>Suitable for:</b> WB, IHC-P
<b>Species reactivity</b>	<b>Reacts with:</b> Human
<b>Immunogen</b>	Recombinant fragment: EGYDSVFSVV RRHQFRWSEI QKGVREVTEP LNLNPAKRPR RQDWDGELYE NGSFYFAKRH LIEMGYLQGG KMAYYEMRAE HSDVDVDID WPIAEQRVLR , corresponding to amino acids 164-264 of Human CMAS <a href="#">Run BLAST with ExPASy</a> <a href="#">Run BLAST with NCBI</a>

Properties

<b>Form</b>	Liquid
<b>Storage instructions</b>	Shipped at 4°C. Upon delivery aliquot and store at -20°C or -80°C. Avoid repeated freeze / thaw cycles.
<b>Storage buffer</b>	Preservative: None PBS, pH 7.2
<b>Purity</b>	Protein G purified
<b>Clonality</b>	Monoclonal
<b>Isotype</b>	IgG2a
<b>Light chain type</b>	kappa

Applications

Our [Abpromise guarantee](#) covers the use of **ab57454** in the following tested applications.

The application notes include recommended starting dilutions; optimal dilutions/concentrations should be determined by the end user.

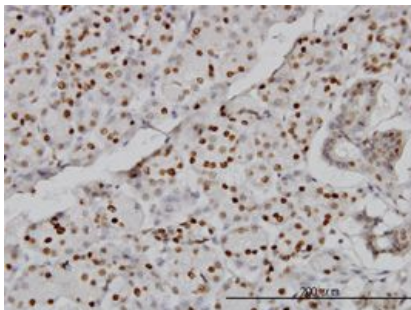
Application	Abreviews	Notes
WB		Use a concentration of 1 - 5 µg/ml. Predicted molecular weight: 48 kDa.

Application	Abreviews	Notes
IHC-P		Use a concentration of 3 µg/ml.

## Target

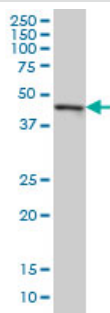
<b>Function</b>	Catalyzes the activation of N-acetylneuraminic acid (NeuNAc) to cytidine 5'-monophosphate N-acetylneuraminic acid (CMP-NeuNAc), a substrate required for the addition of sialic acid. Has some activity toward NeuNAc, N-glycolylneuraminic acid (Neu5Gc) or 2-keto-3-deoxy-D-glycero-D-galacto-nononic acid (KDN).
<b>Tissue specificity</b>	Ubiquitously expressed. Expressed in pancreas, kidney, liver, skeletal muscle, lung, placenta, brain, heart, colon, PBL, small intestine, ovary, testis, prostate, thymus and spleen.
<b>Pathway</b>	Amino-sugar metabolism; N-acetylneuramate metabolism.
<b>Sequence similarities</b>	Belongs to the CMP-NeuNAc synthase family.
<b>Domain</b>	The BC2 (basic cluster 2) motif is necessary and sufficient for the nuclear localization and contains the catalytic active site. The localization in the nucleus is however not required for the enzyme activity.
<b>Cellular localization</b>	Nucleus.

## Images



IHC-P - CMAS antibody (ab57454)

CMAS antibody (ab57454) used in immunohistochemistry at 3µg/ml on formalin fixed and paraffin embedded human salivary gland.



Western blot - CMAS antibody (ab57454)

CMAS antibody (ab57454) at 1µg/lane + HeLa cell lysate at 25µg/lane.

### **Our Abpromise to you: Quality guaranteed and expert technical support**

---

- Replacement or refund for products not performing as stated on the datasheet
- Valid for 12 months from date of delivery
- Response to your inquiry within 24 hours
  
- We provide support in Chinese, English, French, German, Japanese and Spanish
- Extensive multi-media technical resources to help you
- We investigate all quality concerns to ensure our products perform to the highest standards

If the product does not perform as described on this datasheet, we will offer a refund or replacement. For full details of the Abpromise, please visit <http://www.abcam.com/abpromise> or contact our technical team.

### **Terms and conditions**

---

- Guarantee only valid for products bought direct from Abcam or one of our authorized distributors