

Product datasheet

Anti-cPLA2 beta antibody ab57760

1 Image

Overview

<b>Product name</b>	Anti-cPLA2 beta antibody
<b>Description</b>	Mouse monoclonal to cPLA2 beta
<b>Tested applications</b>	<b>Suitable for:</b> WB
<b>Species reactivity</b>	<b>Reacts with:</b> Human
<b>Immunogen</b>	Recombinant full length protein, corresponding to amino acids 1-317 of Human cPLA2 beta

Properties

<b>Form</b>	Liquid
<b>Storage instructions</b>	Shipped at 4°C. Upon delivery aliquot and store at -20°C or -80°C. Avoid repeated freeze / thaw cycles.
<b>Storage buffer</b>	Preservative: None PBS, pH 7.2
<b>Purity</b>	Protein G purified
<b>Clonality</b>	Monoclonal
<b>Isotype</b>	IgG2a
<b>Light chain type</b>	kappa

Applications

Our [Abpromise guarantee](#) covers the use of **ab57760** in the following tested applications.

The application notes include recommended starting dilutions; optimal dilutions/concentrations should be determined by the end user.

Application	Abreviews	Notes
-------------	-----------	-------

WB

**Application notes** WB: Use at a concentration of 1-5 µg/ml.

This antibody has only been tested in WB against the recombinant fragment used as immunogen. We have no data on the detection of endogenous protein.

Not yet tested in other applications.

Optimal dilutions/concentrations should be determined by the end user.

## Target

---

### Relevance

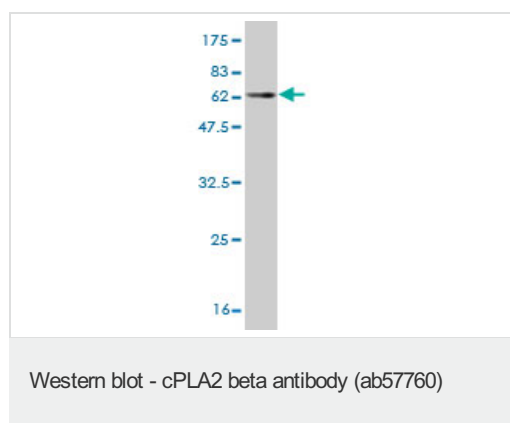
This gene encodes a member of the cytosolic phospholipase A2 protein family. Phospholipase A2 enzymes hydrolyze the sn-2 bond of phospholipids, releasing lysophospholipids and fatty acids. This enzyme may be associated with mitochondria and early endosomes. Most tissues also express read-through transcripts from the upstream gene into this gene, some of which may encode fusion proteins combining the N-terminus of the upstream gene including its JmjC domain with the almost complete coding region of this gene, including the C2 and cytoplasmic phospholipase A2 domains.

### Cellular localization

Cytoplasmic and Mitochondrial

## Images

---



Western blot against tagged recombinant protein immunogen using ab57760 cPLA2 beta antibody at 1ug/ml. Predicted band size of immunogen is 61 kDa

**Please note:** All products are "FOR RESEARCH USE ONLY AND ARE NOT INTENDED FOR DIAGNOSTIC OR THERAPEUTIC USE"

## Our Abpromise to you: Quality guaranteed and expert technical support

---

- Replacement or refund for products not performing as stated on the datasheet
- Valid for 12 months from date of delivery
- Response to your inquiry within 24 hours
- We provide support in Chinese, English, French, German, Japanese and Spanish
- Extensive multi-media technical resources to help you
- We investigate all quality concerns to ensure our products perform to the highest standards

If the product does not perform as described on this datasheet, we will offer a refund or replacement. For full details of the Abpromise, please visit <http://www.abcam.com/abpromise> or contact our technical team.

## Terms and conditions

---

- Guarantee only valid for products bought direct from Abcam or one of our authorized distributors