

Product datasheet

Anti-Staufen antibody [3D8] ab57828

★ ★ ★ ★ ★ 2 Abreviews 1 References 1 Image

Overview

Product name	Anti-Staufen antibody [3D8]
Description	Mouse monoclonal [3D8] to Staufen
Tested applications	Suitable for: WB, ICC/IF
Species reactivity	Reacts with: Human
Immunogen	Recombinant fragment: PHGPLTRPSE QLDYLSRVQG FQVEYKDFPK NNKNEFVSLI NCSSQPPLIS HGIGKDVESC HDMAALNILK LLELDDQQST EMPRTGNGPM SVCGRC, corresponding to amino acids 401-497 of Human Staufen Run BLAST with ExPASy Run BLAST with NCBI

Properties

Form	Liquid
Storage instructions	Shipped at 4°C. Upon delivery aliquot and store at -20°C or -80°C. Avoid repeated freeze / thaw cycles.
Storage buffer	Preservative: None PBS, pH 7.2
Purity	Protein G purified
Clonality	Monoclonal
Clone number	3D8
Isotype	IgG2b
Light chain type	kappa

Applications

Our [Abpromise guarantee](#) covers the use of **ab57828** in the following tested applications.

The application notes include recommended starting dilutions; optimal dilutions/concentrations should be determined by the end user.

Application	Abreviews	Notes
WB		

Application	Abreviews	Notes
-------------	-----------	-------

ICC/IF



Application notes

WB: Use at a concentration of 1-5 µg/ml.

This antibody has only been tested in WB against the recombinant fragment used as immunogen. We have no data on the detection of endogenous protein.

Not yet tested in other applications.

Optimal dilutions/concentrations should be determined by the end user.

Target

Function

Binds double-stranded RNA (regardless of the sequence) and tubulin. May play a role in specific positioning of mRNAs at given sites in the cell by cross-linking cytoskeletal and RNA components, and in stimulating their translation at the site.

Tissue specificity

Widely expressed. Expressed in brain, pancreas, heart, skeletal muscles, liver, lung, kidney and placenta.

Sequence similarities

Contains 3 DRBM (double-stranded RNA-binding) domains.

Domain

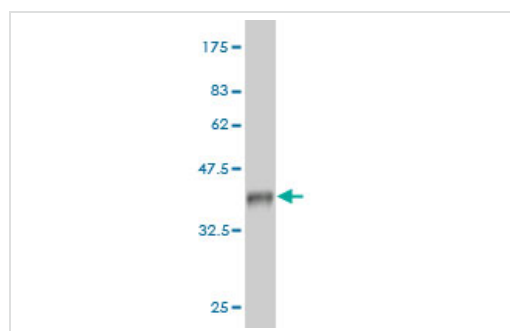
One of the DRDB could be involved in RER binding.

The C-terminal contains the tubulin binding domain (TBD).

Cellular localization

Cytoplasm. Rough endoplasmic reticulum. Localizes exclusively with the rough reticulum endoplasmic.

Images



Western blot against tagged recombinant protein immunogen using ab57828 Staufen antibody at 1ug/ml. Predicted band size of immunogen is 37 kDa

Western blot - Staufen antibody (ab57828)

Please note: All products are "FOR RESEARCH USE ONLY AND ARE NOT INTENDED FOR DIAGNOSTIC OR THERAPEUTIC USE"

Our Abpromise to you: Quality guaranteed and expert technical support

- Replacement or refund for products not performing as stated on the datasheet
- Valid for 12 months from date of delivery
- Response to your inquiry within 24 hours

- We provide support in Chinese, English, French, German, Japanese and Spanish
- Extensive multi-media technical resources to help you
- We investigate all quality concerns to ensure our products perform to the highest standards

If the product does not perform as described on this datasheet, we will offer a refund or replacement. For full details of the Abpromise, please visit <http://www.abcam.com/abpromise> or contact our technical team.

Terms and conditions

- Guarantee only valid for products bought direct from Abcam or one of our authorized distributors