

## Product datasheet

# Anti-EMILIN2 antibody ab57878

1 Image

### Overview

<b>Product name</b>	Anti-EMILIN2 antibody
<b>Description</b>	Mouse monoclonal to EMILIN2
<b>Tested applications</b>	<b>Suitable for:</b> WB
<b>Species reactivity</b>	<b>Reacts with:</b> Human
<b>Immunogen</b>	Recombinant fragment, corresponding to amino acids 121-231 of Human EMILIN2

### Properties

<b>Form</b>	Liquid
<b>Storage instructions</b>	Shipped at 4°C. Upon delivery aliquot and store at -20°C or -80°C. Avoid repeated freeze / thaw cycles.
<b>Storage buffer</b>	Preservative: None PBS, pH 7.2
<b>Purity</b>	Protein G purified
<b>Clonality</b>	Monoclonal
<b>Isotype</b>	IgG3
<b>Light chain type</b>	kappa

### Applications

Our [Abpromise guarantee](#) covers the use of **ab57878** in the following tested applications.

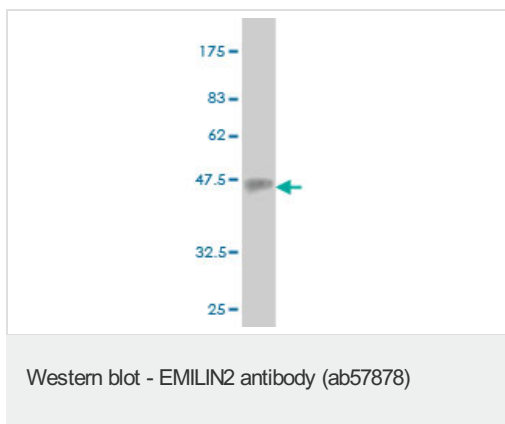
The application notes include recommended starting dilutions; optimal dilutions/concentrations should be determined by the end user.

Application	Abreviews	Notes
WB		Use a concentration of 1 - 5 µg/ml. This antibody has only been tested in WB against the recombinant fragment used as immunogen. We have no data on the detection of endogenous protein.

### Target

<b>Function</b>	May be responsible for anchoring smooth muscle cells to elastic fibers, and may be involved not only in the formation of the elastic fiber, but also in the processes that regulate vessel assembly. Has cell adhesive capacity.
<b>Tissue specificity</b>	Highest levels are present in fetal heart and adult lung. Intermediate levels in peripheral leukocytes, placenta, and spinal cord and low expression in fetal brain, spleen, thymus, and lung and in adult heart, aorta, testis, bone marrow, small intestine, thymus, lymph node, and appendix.
<b>Sequence similarities</b>	Contains 1 C1q domain. Contains 1 collagen-like domain. Contains 1 EMI domain.
<b>Cellular localization</b>	Secreted > extracellular space > extracellular matrix. Found mainly at the interface between amorphous elastin and microfibrils.

## Images



Western blot against tagged recombinant protein immunogen using ab57878 EMILIN2 antibody at 1ug/ml. Predicted band size of immunogen is 38 kDa

**Please note:** All products are "FOR RESEARCH USE ONLY AND ARE NOT INTENDED FOR DIAGNOSTIC OR THERAPEUTIC USE"

## Our Abpromise to you: Quality guaranteed and expert technical support

- Replacement or refund for products not performing as stated on the datasheet
- Valid for 12 months from date of delivery
- Response to your inquiry within 24 hours
- We provide support in Chinese, English, French, German, Japanese and Spanish
- Extensive multi-media technical resources to help you
- We investigate all quality concerns to ensure our products perform to the highest standards

If the product does not perform as described on this datasheet, we will offer a refund or replacement. For full details of the Abpromise, please visit <http://www.abcam.com/abpromise> or contact our technical team.

## Terms and conditions

- Guarantee only valid for products bought direct from Abcam or one of our authorized distributors