

Product datasheet

Anti-XRCC2 antibody ab58466

1 Image

Overview

Product name	Anti-XRCC2 antibody
Description	Rabbit polyclonal to XRCC2
Host species	Rabbit
Specificity	ab58466 detects endogenous levels of total XRCC2 protein.
Tested applications	Suitable for: IHC-P, ELISA
Species reactivity	Reacts with: Human
Immunogen	Synthetic peptide derived from internal sequence of human XRCC2.
Positive control	IHC-P: Human lung carcinoma tissue.

Properties

Form	Liquid
Storage instructions	Shipped at 4°C. Upon delivery aliquot and store at -20°C. Avoid freeze / thaw cycles.
Storage buffer	Preservative: 0.02% Sodium Azide Constituents: 50% Glycerol, PBS (without Mg ²⁺ and Ca ²⁺), 150mM Sodium chloride, pH 7.4
Purity	Immunogen affinity purified
Purification notes	The antibody was affinity purified from rabbit antiserum by affinity chromatography using epitope specific immunogen.
Clonality	Polyclonal
Isotype	IgG

Applications

Our [Abpromise guarantee](#) covers the use of **ab58466** in the following tested applications.

The application notes include recommended starting dilutions; optimal dilutions/concentrations should be determined by the end user.

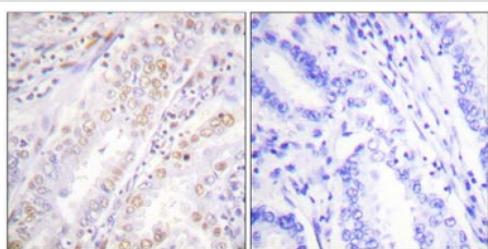
Application	Abreviews	Notes
IHC-P		Use at an assay dependent concentration.

Application	Abreviews	Notes
ELISA		1/10000.

Target

Function	Involved in the homologous recombination repair (HRR) pathway of double-stranded DNA, thought to repair chromosomal fragmentation, translocations and deletions. The BCDX2 complex binds single-stranded DNA, single-stranded gaps in duplex DNA and specifically to nicks in duplex DNA.
Sequence similarities	Belongs to the RecA family. RAD51 subfamily.
Post-translational modifications	Phosphorylated upon DNA damage, probably by ATM or ATR.
Cellular localization	Cytoplasm, Cytoskeleton, Nucleus

Images



Ab58466, at 1/50 dilution, staining paraffin embedded human lung carcinoma tissue by Immunohistochemistry in the absence (left image) or presence (right image) of the immunising peptide.

Immunohistochemistry (Paraffin-embedded sections)
- XRCC2 antibody (ab58466)

Please note: All products are "FOR RESEARCH USE ONLY AND ARE NOT INTENDED FOR DIAGNOSTIC OR THERAPEUTIC USE"

Our Abpromise to you: Quality guaranteed and expert technical support

- Replacement or refund for products not performing as stated on the datasheet
- Valid for 12 months from date of delivery
- Response to your inquiry within 24 hours
- We provide support in Chinese, English, French, German, Japanese and Spanish
- Extensive multi-media technical resources to help you
- We investigate all quality concerns to ensure our products perform to the highest standards

If the product does not perform as described on this datasheet, we will offer a refund or replacement. For full details of the Abpromise, please visit <http://www.abcam.com/abpromise> or contact our technical team.

Terms and conditions

- Guarantee only valid for products bought direct from Abcam or one of our authorized distributors