


Product datasheet

Anti-pan Synuclein antibody ab59270

1 Image

Overview

Product name	Anti-pan Synuclein antibody
Description	Rabbit polyclonal to pan Synuclein
Host species	Rabbit
Specificity	ab59270 detects endogenous levels of total Synuclein protein.
Tested applications	Suitable for: IHC-P, ELISA
Species reactivity	Reacts with: Human Predicted to work with: Mouse 
Immunogen	Synthetic peptide within Human pan Synuclein aa 91-140. The exact sequence is proprietary. A synthesized non-phosphopeptide derived from human synuclein around the phosphorylation site of serine 129.
Positive control	Human breast carcinoma tissue.

Properties

Form	Liquid
Storage instructions	Shipped at 4°C. Store at -20°C. Stable for 12 months at -20°C.
Storage buffer	Preservative: 0.02% Sodium Azide Constituents: 50% Glycerol, PBS (without Mg ²⁺ and Ca ²⁺), 150mM Sodium chloride, pH 7.4
Purity	Immunogen affinity purified
Clonality	Polyclonal
Isotype	IgG

Applications

Our [Abpromise guarantee](#) covers the use of **ab59270** in the following tested applications.

The application notes include recommended starting dilutions; optimal dilutions/concentrations should be determined by the end user.

Application	Abreviews	Notes
IHC-P		Use at an assay dependent concentration.

Application	Abreviews	Notes
ELISA		1/5000.

Target

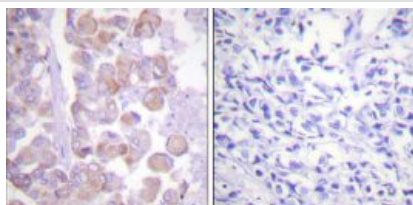
Relevance

Synucleins are small, soluble proteins expressed primarily in neural tissue and in certain tumors. The family includes three known proteins: alpha, beta and gamma synucleins. Synuclein-alpha is primarily localized at the presynaptic region of axons and it may be involved in the regulation of dopamine release and transport. However, it can form filamentous aggregates that are the major non amyloid component of intracellular inclusions in several neurodegenerative diseases (synucleinopathies). Synuclein-alpha may induce fibrillization of the microtubule-associated protein tau and it reduces neuronal responsiveness to various apoptotic stimuli, leading to a decreased caspase 3 activation. Synuclein-alpha is involved in Parkinson's disease, Lewy body dementia, Brain iron accumulation type 1 (NBIA1, also called Hallervorden-Spatz syndrome) and it is a major non-amyloid component of the deposits associated with Alzheimer's disease. Synuclein-beta may be a regulator of the SNCA aggregation process. It protects neurons from staurosporine and 6 hydroxy dopamine (6OHDA)-stimulated caspase activation that also involves p53 and contributes to restore the SNCA anti-apoptotic function abolished by 6OHDA. Gamma synuclein is found primarily in the peripheral nervous system and retina. High levels of expression have been identified in advanced breast carcinomas suggesting a correlation between overexpression of SNCG and breast tumor development.

Cellular localization

Neuronal cytosol and presynaptic terminals

Images



Immunohistochemical analysis of paraffin-embedded human breast carcinoma tissue using ab59270 at a dilution of 1/50. Left hand image - without immunising peptide; right hand image - with immunising peptide.

Immunohistochemistry (Formalin/PFA-fixed paraffin-embedded sections) - Anti-pan Synuclein antibody (ab59270)

Please note: All products are "FOR RESEARCH USE ONLY AND ARE NOT INTENDED FOR DIAGNOSTIC OR THERAPEUTIC USE"

Our Abpromise to you: Quality guaranteed and expert technical support

- Replacement or refund for products not performing as stated on the datasheet
- Valid for 12 months from date of delivery
- Response to your inquiry within 24 hours
- We provide support in Chinese, English, French, German, Japanese and Spanish

- Extensive multi-media technical resources to help you
- We investigate all quality concerns to ensure our products perform to the highest standards

If the product does not perform as described on this datasheet, we will offer a refund or replacement. For full details of the Abpromise, please visit <http://www.abcam.com/abpromise> or contact our technical team.

Terms and conditions

- Guarantee only valid for products bought direct from Abcam or one of our authorized distributors