


Product datasheet

Anti-PBK antibody ab59327

2 Images

Overview

Product name	Anti-PBK antibody
Description	Rabbit polyclonal to PBK
Host species	Rabbit
Specificity	Detects endogenous levels of total PBK/TOPK protein.
Tested applications	Suitable for: WB, ELISA, IHC-P
Species reactivity	Reacts with: Human Predicted to work with: Mouse 
Immunogen	Synthetic non-phosphopeptide derived from human PBK/TOPK around the phosphorylation site of threonine 9 (F-K-T ^P -P-S).
Positive control	Human brain tissue

Properties

Form	Liquid
Storage instructions	Shipped at 4°C. Upon delivery aliquot and store at -20°C. Avoid freeze / thaw cycles.
Storage buffer	Preservative: 0.02% Sodium Azide Constituents: 50% Glycerol, PBS (without Mg ²⁺ and Ca ²⁺), 150mM Sodium chloride, pH 7.4
Purity	Immunogen affinity purified
Clonality	Polyclonal
Isotype	IgG

Applications

Our [Abpromise guarantee](#) covers the use of **ab59327** in the following tested applications.

The application notes include recommended starting dilutions; optimal dilutions/concentrations should be determined by the end user.

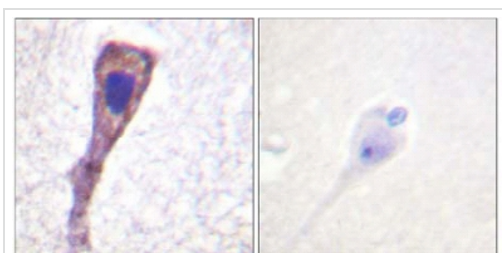
Application	Abreviews	Notes
WB		Use a concentration of 1 µg/ml. Detects a band of approximately 36 kDa (predicted molecular weight: 36 kDa).

Application	Abreviews	Notes
ELISA		1/5000.
IHC-P		Use at an assay dependent concentration.

Target

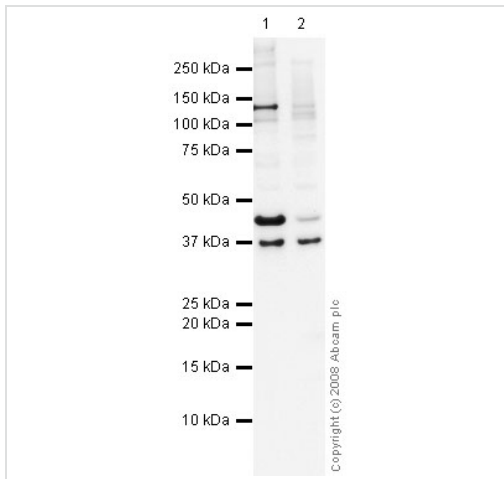
Function	Phosphorylates MAP kinase p38. Seems to be active only in mitosis. May also play a role in the activation of lymphoid cells. When phosphorylated, forms a complex with TP53, leading to TP53 destabilization and attenuation of G2/M checkpoint during doxorubicin-induced DNA damage.
Tissue specificity	Expressed in the testis and placenta. In the testis, restrictedly expressed in outer cell layer of seminiferous tubules.
Sequence similarities	Belongs to the protein kinase superfamily. Ser/Thr protein kinase family. MAP kinase kinase subfamily. Contains 1 protein kinase domain.
Post-translational modifications	Phosphorylated; in a cell-cycle dependent manner at mitosis.

Images



Ab59327 at 1/50-1/100 dilution staining human brain tissue without (left) and with (right) immunizing peptide; paraffin embedded.

Immunohistochemistry (Paraffin-embedded sections)
- PBK antibody (ab59327)



Western blot - PBK antibody (ab59327)

All lanes : Anti-PBK antibody (ab59327) at 1 μ g/ml

Lane 1 : HeLa (Human epithelial carcinoma cell line) Nuclear Lysate

Lane 2 : SW480 (Human colon adenocarcinoma cell line) Whole Cell Lysate

Lysates/proteins at 10 μ g per lane.

Secondary

All lanes : Goat polyclonal to Rabbit IgG - H&L - Pre-Adsorbed (HRP) at 1/3000 dilution

Predicted band size: 36 kDa

Observed band size: 36 kDa

Additional bands at: 140 kDa, 42 kDa. We are unsure as to the identity of these extra bands.

Please note: All products are "FOR RESEARCH USE ONLY AND ARE NOT INTENDED FOR DIAGNOSTIC OR THERAPEUTIC USE"

Our Abpromise to you: Quality guaranteed and expert technical support

- Replacement or refund for products not performing as stated on the datasheet
- Valid for 12 months from date of delivery
- Response to your inquiry within 24 hours
- We provide support in Chinese, English, French, German, Japanese and Spanish
- Extensive multi-media technical resources to help you
- We investigate all quality concerns to ensure our products perform to the highest standards

If the product does not perform as described on this datasheet, we will offer a refund or replacement. For full details of the Abpromise, please visit <http://www.abcam.com/abpromise> or contact our technical team.

Terms and conditions

- Guarantee only valid for products bought direct from Abcam or one of our authorized distributors