


Product datasheet

Anti-PKC mu antibody ab59334

1 Image

Overview

<b>Product name</b>	Anti-PKC mu antibody
<b>Description</b>	Rabbit polyclonal to PKC mu
<b>Host species</b>	Rabbit
<b>Specificity</b>	Detects endogenous levels of total PKD1/PKC mu protein.
<b>Tested applications</b>	<b>Suitable for:</b> ELISA, WB
<b>Species reactivity</b>	<b>Reacts with:</b> Human <b>Predicted to work with:</b> Mouse, Rat 
<b>Immunogen</b>	Synthetic non phosphopeptide derived from human PKD1/PKC mu around the phosphorylation site of serine 910 (RVS <sup>P</sup> IL).
<b>Positive control</b>	Extracts from Jurkat cells

Properties

<b>Form</b>	Liquid
<b>Storage instructions</b>	Shipped at 4°C. Upon delivery aliquot and store at -20°C. Avoid freeze / thaw cycles.
<b>Storage buffer</b>	Preservative: 0.02% Sodium Azide Constituents: 50% Glycerol, PBS (without Mg <sup>2+</sup> and Ca <sup>2+</sup> ), 150mM Sodium chloride, pH 7.4
<b>Purity</b>	Immunogen affinity purified
<b>Purification notes</b>	Purified from rabbit antiserum by affinity chromatography using epitope specific immunogen.
<b>Clonality</b>	Polyclonal
<b>Isotype</b>	IgG

Applications

Our [Abpromise guarantee](#) covers the use of **ab59334** in the following tested applications.

The application notes include recommended starting dilutions; optimal dilutions/concentrations should be determined by the end user.

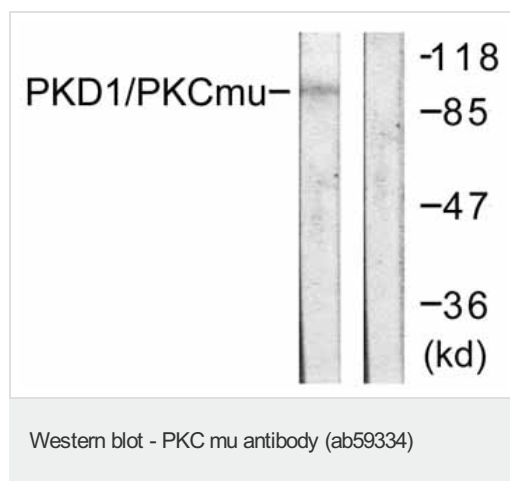
Application	Abreviews	Notes
ELISA		1/5000.

Application	Abreviews	Notes
WB		1/500 - 1/1000. Detects a band of approximately 102 kDa (predicted molecular weight: 102 kDa).

## Target

<b>Function</b>	Converts transient diacylglycerol (DAG) signals into prolonged physiological effects, downstream of PKC. Involved in resistance to oxidative stress through activation of NF-kappa-B.
<b>Sequence similarities</b>	Belongs to the protein kinase superfamily. CAMK Ser/Thr protein kinase family. PKD subfamily. Contains 1 PH domain. Contains 2 phorbol-ester/DAG-type zinc fingers. Contains 1 protein kinase domain.
<b>Cellular localization</b>	Cytoplasm. Membrane. Translocation to the cell membrane is required for kinase activation.

## Images



**All lanes :** Anti-PKC mu antibody (ab59334)  
at 1/500 dilution

**Lane 1 :** extracts from Jurkat cells

**Lane 2 :** extracts from Jurkat cells with  
immunizing peptide

**Predicted band size:** 102 kDa

**Observed band size:** 102 kDa

**Please note:** All products are "FOR RESEARCH USE ONLY AND ARE NOT INTENDED FOR DIAGNOSTIC OR THERAPEUTIC USE"

## Our Abpromise to you: Quality guaranteed and expert technical support

- Replacement or refund for products not performing as stated on the datasheet
- Valid for 12 months from date of delivery
- Response to your inquiry within 24 hours
- We provide support in Chinese, English, French, German, Japanese and Spanish
- Extensive multi-media technical resources to help you
- We investigate all quality concerns to ensure our products perform to the highest standards

If the product does not perform as described on this datasheet, we will offer a refund or replacement. For full details of the Abpromise, please visit <http://www.abcam.com/abpromise> or contact our technical team.

## Terms and conditions

---

- Guarantee only valid for products bought direct from Abcam or one of our authorized distributors