

Product datasheet

Anti-NRG2 antibody ab60088

[1 References](#) [1 Image](#)

Overview

Product name	Anti-NRG2 antibody
Description	Rabbit polyclonal to NRG2
Host species	Rabbit
Tested applications	Suitable for: ELISA, IHC-P
Species reactivity	Reacts with: Human
Immunogen	KLH conjugated synthetic peptides selected from the C-term region (amino acids 834~850) and center region (amino acids 373~389) of human NRG2.
Positive control	Human hepatocarcinoma tissue.

Properties

Form	Liquid
Storage instructions	Shipped at 4°C. Store at +4°C short term (1-2 weeks). Upon delivery aliquot. Store at -20°C or -80°C. Avoid freeze / thaw cycle.
Storage buffer	Preservative: 0.09% Sodium Azide Constituents: PBS
Purity	Protein G purified
Purification notes	This antibody is purified through a protein G column and eluted out with both high and low pH buffers and neutralized immediately after elution then followed by dialysis against PBS.
Clonality	Polyclonal
Isotype	IgG

Applications

Our [Abpromise guarantee](#) covers the use of **ab60088** in the following tested applications.

The application notes include recommended starting dilutions; optimal dilutions/concentrations should be determined by the end user.

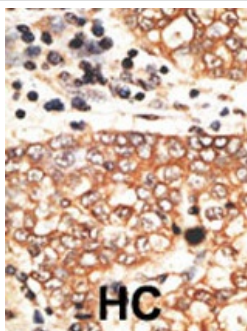
Application	Abreviews	Notes
ELISA		1/1000.

Application	Abreviews	Notes
IHC-P		1/50 - 1/100.

Target

Function	Direct ligand for ERBB3 and ERBB4 tyrosine kinase receptors. Concomitantly recruits ERBB1 and ERBB2 coreceptors, resulting in ligand-stimulated tyrosine phosphorylation and activation of the ERBB receptors. May also promote the heterodimerization with the EGF receptor.
Tissue specificity	Restricted to the cerebellum in the adult.
Sequence similarities	Belongs to the neuregulin family. Contains 1 EGF-like domain. Contains 1 Ig-like C2-type (immunoglobulin-like) domain.
Domain	The cytoplasmic domain may be involved in the regulation of trafficking and proteolytic processing. Regulation of the proteolytic processing involves initial intracellular domain dimerization. ERBB receptor binding is elicited entirely by the EGF-like domain.
Post-translational modifications	Proteolytic cleavage close to the plasma membrane on the external face leads to the release of the soluble growth factor form. Extensive glycosylation precedes the proteolytic cleavage.
Cellular localization	Secreted and Cell membrane. Does not seem to be active.

Images



Immunohistochemistry (Formalin/PFA-fixed paraffin-embedded sections) - NRG2 antibody (ab60088)

Ab60088 (1/50-1/100) staining human NRG2 in human cancer tissue by immunohistochemistry using formalin fixed, paraffin embedd tissue.

Formalin-fixed and paraffin-embedded human cancer tissue reacted with the primary antibody, which was peroxidase-conjugated to the secondary antibody, followed by AEC staining.

HC = hepatocarcinoma.

Please note: All products are "FOR RESEARCH USE ONLY AND ARE NOT INTENDED FOR DIAGNOSTIC OR THERAPEUTIC USE"

Our Promise to you: Quality guaranteed and expert technical support

- Replacement or refund for products not performing as stated on the datasheet
- Valid for 12 months from date of delivery

- Response to your inquiry within 24 hours
- We provide support in Chinese, English, French, German, Japanese and Spanish
- Extensive multi-media technical resources to help you
- We investigate all quality concerns to ensure our products perform to the highest standards

If the product does not perform as described on this datasheet, we will offer a refund or replacement. For full details of the Abpromise, please visit <http://www.abcam.com/abpromise> or contact our technical team.

Terms and conditions

- Guarantee only valid for products bought direct from Abcam or one of our authorized distributors