

Product datasheet

Anti-ELK3 (phospho S357) antibody ab61050

1 Image

Overview

Product name	Anti-ELK3 (phospho S357) antibody
Description	Rabbit polyclonal to ELK3 (phospho S357)
Host species	Rabbit
Specificity	Detects endogenous levels of ELK3 only when phosphorylated at serine 357.
Tested applications	Suitable for: ELISA, ICC/IF
Species reactivity	Reacts with: Human
Immunogen	Synthetic phosphopeptide derived from human ELK3 around the phosphorylation site of serine 357 (S-L-S ^P -P-V).
Positive control	HeLa cells.

Properties

Form	Liquid
Storage instructions	Shipped at 4°C. Store at -20°C. Stable for 12 months at -20°C.
Storage buffer	Preservative: 0.02% Sodium Azide Constituents: 50% Glycerol, PBS (without Mg ²⁺ and Ca ²⁺), 150mM Sodium chloride, pH 7.4
Purity	Immunogen affinity purified
Purification notes	Affinity-purified from rabbit antiserum by affinity-chromatography using epitope-specific phosphopeptide. The antibody against non-phosphopeptide was removed by chromatography using non-phosphopeptide corresponding to the phosphorylation site.
Clonality	Polyclonal
Isotype	IgG

Applications

Our [Abpromise guarantee](#) covers the use of **ab61050** in the following tested applications.

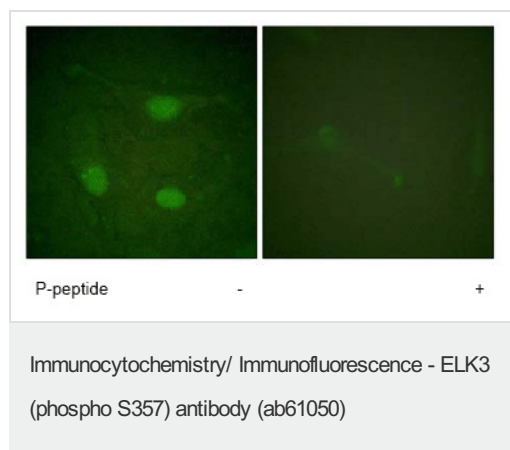
The application notes include recommended starting dilutions; optimal dilutions/concentrations should be determined by the end user.

Application	Abreviews	Notes
ELISA		1/20000.
ICC/IF		1/500 - 1/1000.

Target

Function	May be a negative regulator of transcription, but can activate transcription when coexpressed with Ras, Src or Mos. Forms a ternary complex with the serum response factor and the ETS and SRF motifs of the Fos serum response element.
Sequence similarities	Belongs to the ETS family. Contains 1 ETS DNA-binding domain.
Cellular localization	Nucleus.

Images



ab61050 at 1/500 - 1/1000 dilution staining ELK3 in HeLa cells by Immunofluorescence, in the absence or presence of the immunising peptide.

Please note: All products are "FOR RESEARCH USE ONLY AND ARE NOT INTENDED FOR DIAGNOSTIC OR THERAPEUTIC USE"

Our Abpromise to you: Quality guaranteed and expert technical support

- Replacement or refund for products not performing as stated on the datasheet
- Valid for 12 months from date of delivery
- Response to your inquiry within 24 hours
- We provide support in Chinese, English, French, German, Japanese and Spanish
- Extensive multi-media technical resources to help you
- We investigate all quality concerns to ensure our products perform to the highest standards

If the product does not perform as described on this datasheet, we will offer a refund or replacement. For full details of the Abpromise, please visit <http://www.abcam.com/abpromise> or contact our technical team.

Terms and conditions

- Guarantee only valid for products bought direct from Abcam or one of our authorized distributors