

## Product datasheet

# Anti-Caspase-9 antibody ab61763

[2 Images](#)

### Overview

<b>Product name</b>	Anti-Caspase-9 antibody
<b>Description</b>	Rabbit polyclonal to Caspase-9
<b>Host species</b>	Rabbit
<b>Tested applications</b>	<b>Suitable for:</b> ELISA, ICC/IF, WB
<b>Species reactivity</b>	<b>Reacts with:</b> Human
<b>Immunogen</b>	Synthetic peptide corresponding to Human Caspase-9. Database link: <a href="#">P55211</a>
<b>Positive control</b>	Extracts from 293 cells, treated with Calyculin (50nM, 30mins), HeLa cells.

### Properties

<b>Form</b>	Liquid
<b>Storage instructions</b>	Shipped at 4°C. Store at -20°C. Stable for 12 months at -20°C.
<b>Storage buffer</b>	Preservative: 0.02% Sodium Azide Constituents: 50% Glycerol, PBS, 150mM Sodium chloride, pH 7.4
<b>Purity</b>	Immunogen affinity purified
<b>Clonality</b>	Polyclonal
<b>Isotype</b>	IgG

### Applications

Our [Abpromise guarantee](#) covers the use of **ab61763** in the following tested applications.

The application notes include recommended starting dilutions; optimal dilutions/concentrations should be determined by the end user.

Application	Abreviews	Notes
ELISA		1/20000.
ICC/IF		1/500 - 1/1000.
WB		1/5 - 1/1000. Detects a band of approximately 46 kDa (predicted molecular weight: 46 kDa).

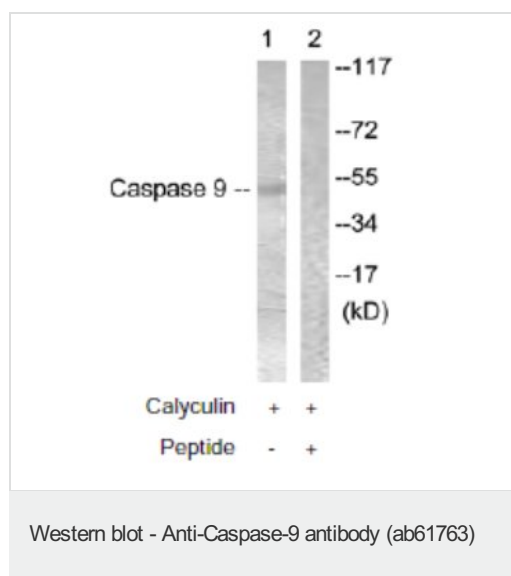
## Target

<b>Function</b>	Involved in the activation cascade of caspases responsible for apoptosis execution. Binding of caspase-9 to Apaf-1 leads to activation of the protease which then cleaves and activates caspase-3. Proteolytically cleaves poly(ADP-ribose) polymerase (PARP). Isoform 2 lacks activity is an dominant-negative inhibitor of caspase-9.
<b>Tissue specificity</b>	Ubiquitous, with highest expression in the heart, moderate expression in liver, skeletal muscle, and pancreas. Low levels in all other tissues. Within the heart, specifically expressed in myocytes.
<b>Sequence similarities</b>	Belongs to the peptidase C14A family. Contains 1 CARD domain.
<b>Developmental stage</b>	Expressed at low levels in fetal heart, at moderate levels in neonate heart, and at high levels in adult heart.
<b>Post-translational modifications</b>	Cleavages at Asp-315 by granzyme B and at Asp-330 by caspase-3 generate the two active subunits. Caspase-8 and -10 can also be involved in these processing events.

## Images



HeLa cells stained with ab61763 at 1/500 dilution, with and without the immunising peptide.



**All lanes :** Anti-Caspase-9 antibody (ab61763) at 1/500 dilution

**Lane 1 :** Extracts from 293 cells, treated with Calyculin (50nM, 30mins).

**Lane 2 :** Extracts from 293 cells, treated with Calyculin (50nM, 30mins), and the immunising peptide.

**Predicted band size:** 46 kDa

**Observed band size:** 46 kDa

### **Our Abpromise to you: Quality guaranteed and expert technical support**

---

- Replacement or refund for products not performing as stated on the datasheet
- Valid for 12 months from date of delivery
- Response to your inquiry within 24 hours
  
- We provide support in Chinese, English, French, German, Japanese and Spanish
- Extensive multi-media technical resources to help you
- We investigate all quality concerns to ensure our products perform to the highest standards

If the product does not perform as described on this datasheet, we will offer a refund or replacement. For full details of the Abpromise, please visit <http://www.abcam.com/abpromise> or contact our technical team.

### **Terms and conditions**

---

- Guarantee only valid for products bought direct from Abcam or one of our authorized distributors