

Product datasheet

Anti-PDE7B antibody ab61812

1 Image

Overview

| | |
|----------------------------|---|
| Product name | Anti-PDE7B antibody |
| Description | Rabbit polyclonal to PDE7B |
| Host species | Rabbit |
| Tested applications | Suitable for: IHC-P |
| Species reactivity | Reacts with: Human |
| Immunogen | Synthetic peptide corresponding to Human PDE7B (N terminal) conjugated to Keyhole Limpet Haemocyanin (KLH). |
| General notes | For short term storage: at -4°C |

Properties

| | |
|-----------------------------|---|
| Form | Liquid |
| Storage instructions | Shipped at 4°C. Upon delivery aliquot. Avoid freeze / thaw cycle. |
| Storage buffer | Preservative: 0.1% Sodium Azide Constituents: PBS, pH 7.7 |
| Purity | Immunogen affinity purified |
| Clonality | Polyclonal |
| Isotype | IgG |

Applications

Our [Abpromise guarantee](#) covers the use of **ab61812** in the following tested applications.

The application notes include recommended starting dilutions; optimal dilutions/concentrations should be determined by the end user.

| Application | Abreviews | Notes |
|-------------|-----------|----------------------------------|
| IHC-P | | Use a concentration of 10 µg/ml. |

Target

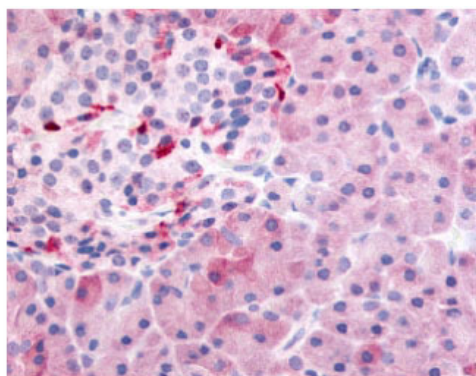
Relevance

PDE7B is a cAMP specific phosphodiesterase. The cAMP-specific phosphodiesterase type-7 (PDE7) family is comprised of 2 genes (PDE7A and PDE7B) each with multiple splice variants generated by RNA splicing and use of alternate initiation sites. PDE7B has three splice variants (PDE7B1 = 446 amino acid; PDE7B2 = 359 amino acids and PDE7B3 = 459 amino acids. Both PDE7B2 and PDE7B3 possess unique N-terminal sequences. PDE7B is expressed in various tissues including skeletal muscle, heart, lung and testis. PDE7B may be involved in the control of cAMP-mediated neural activity and cAMP metabolism in the brain.

Cellular localization

cytosol

Images



Immunohistochemistry analysis of human pancreas (Formalin/PFA-fixed paraffin-embedded sections) using ab61812 at 10µg/ml.

Immunohistochemistry (Formalin/PFA-fixed paraffin-embedded sections) - PDE7B antibody (ab61812)

Please note: All products are "FOR RESEARCH USE ONLY AND ARE NOT INTENDED FOR DIAGNOSTIC OR THERAPEUTIC USE"

Our Abpromise to you: Quality guaranteed and expert technical support

- Replacement or refund for products not performing as stated on the datasheet
- Valid for 12 months from date of delivery
- Response to your inquiry within 24 hours
- We provide support in Chinese, English, French, German, Japanese and Spanish
- Extensive multi-media technical resources to help you
- We investigate all quality concerns to ensure our products perform to the highest standards

If the product does not perform as described on this datasheet, we will offer a refund or replacement. For full details of the Abpromise, please visit <http://www.abcam.com/abpromise> or contact our technical team.

Terms and conditions

- Guarantee only valid for products bought direct from Abcam or one of our authorized distributors