

Product datasheet

Anti-SLC6A18 antibody ab62269

[2 Images](#)

Overview

Product name	Anti-SLC6A18 antibody
Description	Rabbit polyclonal to SLC6A18
Tested applications	Suitable for: WB, IHC-P, ELISA
Species reactivity	Reacts with: Human Predicted to work with: Mouse, Rat, Horse, Cow, Cat, Dog, Pig
Immunogen	A region within synthetic peptide: VAQLPLKACL LEDFLDKSAS GPGLAFVVFT ETDLHMPGAP VWAMLFFGML, corresponding to internal sequence amino acids 361-410 of Human SLC6A18 Run BLAST with ExPASy Run BLAST with NCBI
Positive control	Jurkat cell lysate. Human kidney.

Properties

Form	Liquid
Storage instructions	Shipped at 4°C. Upon delivery aliquot and store at -20°C or -80°C. Avoid repeated freeze / thaw cycles.
Storage buffer	Preservative: None Constituents: 2% Sucrose, PBS
Purity	Protein A purified
Clonality	Polyclonal
Isotype	IgG

Applications

Our [Abpromise guarantee](#) covers the use of **ab62269** in the following tested applications.

The application notes include recommended starting dilutions; optimal dilutions/concentrations should be determined by the end user.

Application	Abreviews	Notes
WB		Use a concentration of 1.25 µg/ml. Detects a band of approximately 71 kDa (predicted molecular weight: 71 kDa). Good results were obtained when blocked with 5% non-fat dry milk in 0.05% PBS-T.

Application	Abreviews	Notes
IHC-P		Use a concentration of 4 - 8 µg/ml.
ELISA		Use at an assay dependent concentration. Titre using peptide based assay: 1/312500.

Target

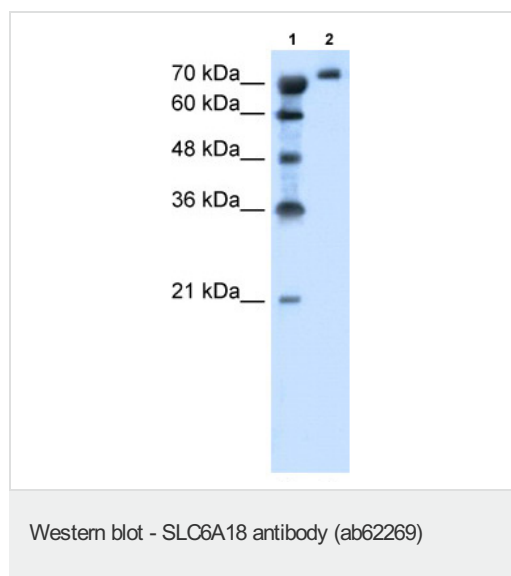
Relevance

SLC6A18 (solute carrier family 6, member 18) belongs to the sodium:neurotransmitter symporter (SNF) family. The SLC6 family of proteins act as specific transporters for neurotransmitters, amino acids, and osmolytes like betaine, taurine, and creatine. The specific function of SLC6A18 function remains unknown. It is abundantly expressed in kidney, but is not expressed in the intestine.

Cellular localization

Membrane; Multi-pass membrane protein.

Images



All lanes : SLC6A18 antibody (ab62269) at 1.25µg/ml (in 5% skim milk / PBS buffer)

Lane 1 : Molecular weight marker

Lane 2 : Jurkat cell lysate at 10 µg

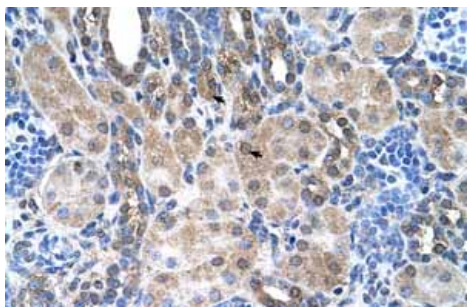
Secondary

HRP conjugated anti-Rabbit IgG at 1/50000 dilution

Predicted band size : 71 kDa

Observed band size : 71 kDa

Gel concentration: 12%



Immunohistochemistry (Formalin/PFA-fixed paraffin-embedded sections) analysis of human kidney tissue labelling SLC6A18 with ab62269 at 4-8µg/ml. Arrows indicate positively labelled epithelial cells of the renal tubule. Magnification: 400X.

Immunohistochemistry (Formalin/PFA-fixed paraffin-embedded sections)-Anti-SLC6A18 antibody(ab62269)

Please note: All products are "FOR RESEARCH USE ONLY AND ARE NOT INTENDED FOR DIAGNOSTIC OR THERAPEUTIC USE"

Our Abpromise to you: Quality guaranteed and expert technical support

- Replacement or refund for products not performing as stated on the datasheet
- Valid for 12 months from date of delivery
- Response to your inquiry within 24 hours
- We provide support in Chinese, English, French, German, Japanese and Spanish
- Extensive multi-media technical resources to help you
- We investigate all quality concerns to ensure our products perform to the highest standards

If the product does not perform as described on this datasheet, we will offer a refund or replacement. For full details of the Abpromise, please visit <http://www.abcam.com/abpromise> or contact our technical team.

Terms and conditions

- Guarantee only valid for products bought direct from Abcam or one of our authorized distributors