


Product datasheet

Anti-GSTM2 antibody ab62550

3 Images

Overview

Product name	Anti-GSTM2 antibody
Description	Rabbit polyclonal to GSTM2
Tested applications	Suitable for: WB, IHC-P
Species reactivity	Reacts with: Human Predicted to work with: Monkey 
Immunogen	Synthetic peptide: TQSNAILRYIARKHNLCGES EKEQIREIDIL ENQFMDSRMQ LAKLCYDPDF (Human) Run BLAST with ExPASy Run BLAST with NCBI
Positive control	Fetal liver cell lysate or human muscle tissue.

Properties

Form	Liquid
Storage instructions	Shipped at 4°C. Upon delivery aliquot and store at -20°C or -80°C. Avoid repeated freeze / thaw cycles.
Storage buffer	Preservative: None Constituents: 2% Sucrose, PBS
Purity	Immunogen affinity purified
Clonality	Polyclonal
Isotype	IgG

Applications

Our [Abpromise guarantee](#) covers the use of **ab62550** in the following tested applications.

The application notes include recommended starting dilutions; optimal dilutions/concentrations should be determined by the end user.

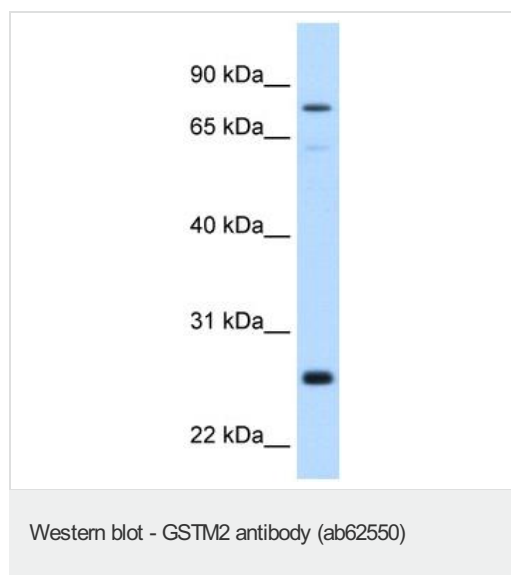
Application	Abreviews	Notes
WB		Use a concentration of 0.25 µg/ml. Detects a band of approximately 26 kDa (predicted molecular weight: 26 kDa). Good results were obtained when blocked with 5% non-fat dry milk in 0.05% PBS-T.

Application	Abreviews	Notes
IHC-P		Use a concentration of 4 - 8 µg/ml.

Target

Function	Conjugation of reduced glutathione to a wide number of exogenous and endogenous hydrophobic electrophiles.
Tissue specificity	Muscle.
Sequence similarities	Belongs to the GST superfamily. Mu family. Contains 1 GST C-terminal domain. Contains 1 GST N-terminal domain.
Cellular localization	Cytoplasm.

Images



Anti-GSTM2 antibody (ab62550) at 0.25 µg/ml
+ Fetal liver cell lysate at 10 µg

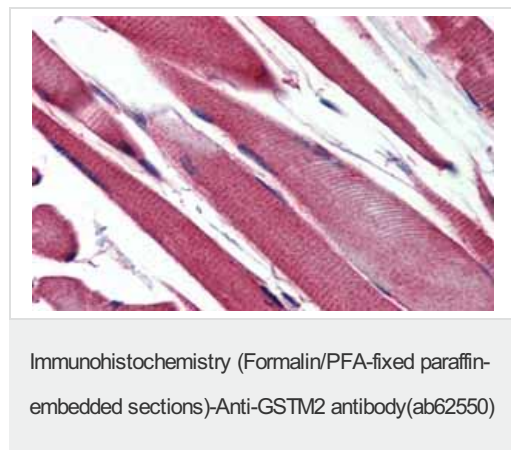
Secondary

HRP conjugated anti-Rabbit IgG (1/50,000 -
1/100,000)

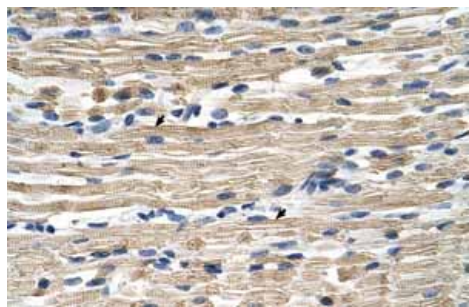
Predicted band size : 26 kDa

Observed band size : 26 kDa

Additional bands at : 80 kDa. We are
unsure as to the identity of these extra bands.



Immunohistochemistry of Human Skeletal
Muscle lysate tissue at an antibody
concentration of 5.0µg/ml using anti-GSTM2
antibody (ab62550)



Immunohistochemistry (Formalin/PFA-fixed paraffin-embedded sections) analysis of human muscle tissue labelling GSTM2 with ab62550 at 4-8 μ g/ml. Arrows indicate positively labelled skeletal muscle cells. Magnification: 400X.

Immunohistochemistry (Formalin/PFA-fixed paraffin-embedded sections)-Anti-GSTM2 antibody(ab62550)

Please note: All products are "FOR RESEARCH USE ONLY AND ARE NOT INTENDED FOR DIAGNOSTIC OR THERAPEUTIC USE"

Our Abpromise to you: Quality guaranteed and expert technical support

- Replacement or refund for products not performing as stated on the datasheet
- Valid for 12 months from date of delivery
- Response to your inquiry within 24 hours
- We provide support in Chinese, English, French, German, Japanese and Spanish
- Extensive multi-media technical resources to help you
- We investigate all quality concerns to ensure our products perform to the highest standards

If the product does not perform as described on this datasheet, we will offer a refund or replacement. For full details of the Abpromise, please visit <http://www.abcam.com/abpromise> or contact our technical team.

Terms and conditions

- Guarantee only valid for products bought direct from Abcam or one of our authorized distributors