


Product datasheet

Anti-Ubiquitin antibody ab6309

2 References 1 Image

Overview

| | |
|----------------------------|--|
| Product name | Anti-Ubiquitin antibody |
| Description | Rabbit polyclonal to Ubiquitin |
| Host species | Rabbit |
| Specificity | Recognises 1-3 bands in Western blot with bovine red blood cell ubiquitin. |
| Tested applications | Suitable for: IHC-Fr, WB |
| Species reactivity | Reacts with: Mouse, Cow, Saccharomyces cerevisiae Predicted to work with: a wide range of other species  |
| Immunogen | Tissue, cells or virus corresponding to Cow Ubiquitin conjugated to Keyhole Limpet Haemocyanin (KLH). Bovine red blood cell ubiquitin |

Properties

| | |
|-----------------------------|---|
| Form | Liquid |
| Storage instructions | Store at +4°C short term (1-2 weeks) (add antibacterial agent). Aliquot and store at -20°C or -80°C. Avoid repeated freeze / thaw cycles. |
| Storage buffer | PBS pH7.2 with 1% lactose |
| Purity | Whole antiserum |
| Clonality | Polyclonal |
| Isotype | IgG |

Applications

Our [Abpromise guarantee](#) covers the use of **ab6309** in the following tested applications.

The application notes include recommended starting dilutions; optimal dilutions/concentrations should be determined by the end user.

| Application | Abreviews | Notes |
|-------------|-----------|-------|
| IHC-Fr | | |
| WB | | |

Application notes

IHC-Fr: Use at an assay dependent concentration.

WB: Use at an assay dependent concentration.

Suggested working dilution(s): Western blotting - minimum 1/100 (purified ubiquitin from bovine RBC)

This antibody gives a nice positive signal on 5 ug of yeast ubiquitin. It is not as strong as the signal with bovine but is still detectable.

Not yet tested in other applications.

Optimal dilutions/concentrations should be determined by the end user.

Target

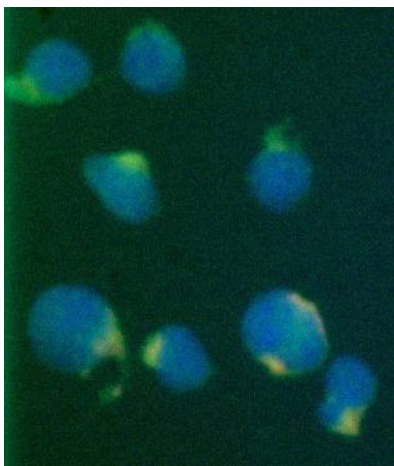
Relevance

Function: Ubiquitin exists either covalently attached to another protein, or free (unanchored). When covalently bound, it is conjugated to target proteins via an isopeptide bond either as a monomer (monoubiquitin), a polymer linked via different Lys residues of the ubiquitin (polyubiquitin chains) or a linear polymer linked via the initiator Met of the ubiquitin (linear polyubiquitin chains). Polyubiquitin chains, when attached to a target protein, have different functions depending on the Lys residue of the ubiquitin that is linked: Lys-6-linked may be involved in DNA repair; Lys-11-linked is involved in ERAD (endoplasmic reticulum-associated degradation) and in cell-cycle regulation; Lys-29-linked is involved in lysosomal degradation; Lys-33-linked is involved in kinase modification; Lys-48-linked is involved in protein degradation via the proteasome; Lys-63-linked is involved in endocytosis, DNA-damage responses as well as in signaling processes leading to activation of the transcription factor NF-kappa-B. Linear polymer chains formed via attachment by the initiator Met lead to cell signaling. Ubiquitin is usually conjugated to Lys residues of target proteins, however, in rare cases, conjugation to Cys or Ser residues has been observed. When polyubiquitin is free (unanchored-polyubiquitin), it also has distinct roles, such as in activation of protein kinases, and in signaling. Similarity: Belongs to the ubiquitin family. Contains 3 ubiquitin-like domains.

Cellular localization

Cell Membrane, Cytoplasmic and Nuclear

Images



Immunofluorescence of P23H mutant cells with ubiquitin, showing co-localisation of mutant aggregated protein with ubiquitin (1 / 500 dilution). This picture was kindly supplied as part of the review submitted by Ritu Malhorta.

Immunocytochemistry/ Immunofluorescence -
Ubiquitin antibody (ab6309)

Our Abpromise to you: Quality guaranteed and expert technical support

- Replacement or refund for products not performing as stated on the datasheet
- Valid for 12 months from date of delivery
- Response to your inquiry within 24 hours

- We provide support in Chinese, English, French, German, Japanese and Spanish
- Extensive multi-media technical resources to help you
- We investigate all quality concerns to ensure our products perform to the highest standards

If the product does not perform as described on this datasheet, we will offer a refund or replacement. For full details of the Abpromise, please visit <http://www.abcam.com/abpromise> or contact our technical team.

Terms and conditions

- Guarantee only valid for products bought direct from Abcam or one of our authorized distributors