


Product datasheet

Anti-CARD10 antibody ab64535

1 Image

Overview

Product name	Anti-CARD10 antibody
Description	Rabbit polyclonal to CARD10
Host species	Rabbit
Tested applications	Suitable for: ELISA, WB, IP
Species reactivity	Reacts with: Mouse Predicted to work with: Rat, Dog, Monkey 
Immunogen	Synthetic peptide corresponding to an internal portion of mouse CARD10.
Positive control	NIH/3T3 whole cell lysate.

Properties

Form	Liquid
Storage instructions	Shipped at 4°C. Store at +4°C.
Storage buffer	Preservative: 0.05% Sodium Azide Constituents: PBS, pH 7.4
Purity	Immunogen affinity purified
Clonality	Polyclonal
Isotype	IgG

Applications

Our [Abpromise guarantee](#) covers the use of **ab64535** in the following tested applications.

The application notes include recommended starting dilutions; optimal dilutions/concentrations should be determined by the end user.

Application	Abreviews	Notes
ELISA		
WB		
IP		

Application notes

ELISA: Use at a concentration of 0.1 - 1 µg/ml.

IP: Use 3 - 5µg/extract of 10⁷ cells.

WB: Use at a concentration of 0.5 - 2.0 µg/ml. Detects a band of approximately 120 kDa (predicted molecular weight: 116 kDa).

Not yet tested in other applications.

Optimal dilutions/concentrations should be determined by the end user.

Target

Function

Activates NF-kappa-B via BCL10 and IKK.

Tissue specificity

Detected in adult heart, kidney and liver; lower levels in intestine, placenta, muscle and lung. Also found in fetal lung, liver and kidney.

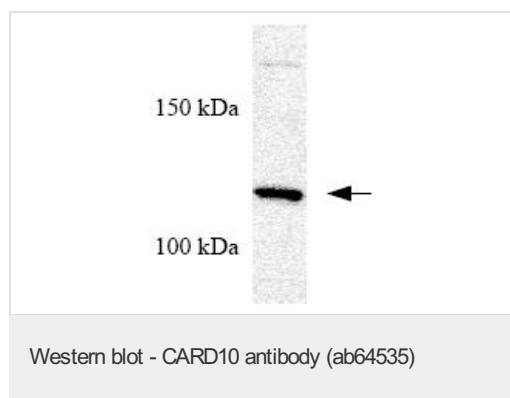
Sequence similarities

Contains 1 CARD domain.

Cellular localization

Cytoplasm.

Images



Anti-CARD10 antibody (ab64535) at 1/200 dilution + NIH/3T3 whole cell lysate at 15 µg

Predicted band size: 116 kDa

Observed band size: 120 kDa

Please note: All products are "FOR RESEARCH USE ONLY AND ARE NOT INTENDED FOR DIAGNOSTIC OR THERAPEUTIC USE"

Our Abpromise to you: Quality guaranteed and expert technical support

- Replacement or refund for products not performing as stated on the datasheet
- Valid for 12 months from date of delivery
- Response to your inquiry within 24 hours
- We provide support in Chinese, English, French, German, Japanese and Spanish
- Extensive multi-media technical resources to help you
- We investigate all quality concerns to ensure our products perform to the highest standards

If the product does not perform as described on this datasheet, we will offer a refund or replacement. For full details of the Abpromise, please visit <http://www.abcam.com/abpromise> or contact our technical team.

Terms and conditions

- Guarantee only valid for products bought direct from Abcam or one of our authorized distributors