


Product datasheet

Anti-DCAMKL2 antibody ab64852

1 Image

Overview

Product name	Anti-DCAMKL2 antibody
Description	Rabbit polyclonal to DCAMKL2
Specificity	ab64852 detects endogenous levels of total DCAMKL2 protein.
Tested applications	Suitable for: WB, ELISA
Species reactivity	Reacts with: Human Predicted to work with: Mouse 
Immunogen	Synthetic peptide derived from an internal region of human DCAMKL2.
Positive control	Extracts from HepG2 cells.

Properties

Form	Liquid
Storage instructions	Shipped at 4°C. Store at -20°C. Stable for 12 months at -20°C.
Storage buffer	Preservative: 0.02% Sodium Azide Constituents: 50% Glycerol, PBS (without Mg ²⁺ and Ca ²⁺), 150mM Sodium chloride, pH 7.4
Purity	Immunogen affinity purified
Clonality	Polyclonal
Isotype	IgG

Applications

Our [Abpromise guarantee](#) covers the use of **ab64852** in the following tested applications.

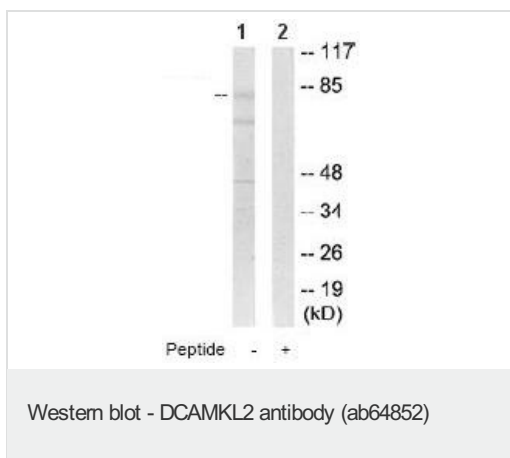
The application notes include recommended starting dilutions; optimal dilutions/concentrations should be determined by the end user.

Application	Abreviews	Notes
WB		1/500 - 1/1000. Detects a band of approximately 84 kDa (predicted molecular weight: 84 kDa).
ELISA		1/10000.

Target

Function	Protein kinase with a significantly reduced Ca ²⁺ /CAM affinity and dependence compared to other members of the CaMK family. May play a role in the down-regulation of CRE-dependent gene activation probably by phosphorylation of the CREB coactivator CRTC2/TORC2 and the resulting retention of TORC2 in the cytoplasm.
Sequence similarities	Belongs to the protein kinase superfamily. CAMK Ser/Thr protein kinase family. CaMK subfamily. Contains 2 doublecortin domains. Contains 1 protein kinase domain.
Domain	The doublecortin domains are involved in the colocalization with microtubules.
Cellular localization	Cytoplasm > cytoskeleton. Colocalizes with microtubules.

Anti-DCAMKL2 antibody images



All lanes : Anti-DCAMKL2 antibody (ab64852) at 1/500 dilution

Lane 1 : Extracts of HepG2 cells

Lane 2 : Extracts of HepG2 cells with immunising peptide at 10 µg

Lysates/proteins at 30 µg per lane.

Predicted band size : 84 kDa

Observed band size : 84 kDa

Additional bands at : 45 kDa, 70 kDa. We are unsure as to the identity of these extra bands.

Please note: All products are "FOR RESEARCH USE ONLY AND ARE NOT INTENDED FOR DIAGNOSTIC OR THERAPEUTIC USE"

Our Abpromise to you: Quality guaranteed and expert technical support

- Replacement or refund for products not performing as stated on the datasheet
- Valid for 12 months from date of delivery
- Response to your inquiry within 24 hours
- We provide support in Chinese, English, French, German, Japanese and Spanish
- Extensive multi-media technical resources to help you
- We investigate all quality concerns to ensure our products perform to the highest standards

If the product does not perform as described on this datasheet, we will offer a refund or replacement. For full details of the Abpromise, please visit <http://www.abcam.com/abpromise> or contact our technical team.

Terms and conditions

- Guarantee only valid for products bought direct from Abcam or one of our authorized distributors

