


Product datasheet

Anti-BCKDH kinase antibody ab65027

2 Images

Overview

<b>Product name</b>	Anti-BCKDH kinase antibody
<b>Description</b>	Rabbit polyclonal to BCKDH kinase
<b>Host species</b>	Rabbit
<b>Specificity</b>	ab65027 detects endogenous levels of total BCKDH kinase protein.
<b>Tested applications</b>	<b>Suitable for:</b> ELISA, ICC/IF, WB
<b>Species reactivity</b>	<b>Reacts with:</b> Human <b>Predicted to work with:</b> Mouse, Rat 
<b>Immunogen</b>	Synthetic peptide derived from an internal sequence of human BCKDH kinase
<b>Positive control</b>	293 and Jurkat cell extracts and HeLa cells.

Properties

<b>Form</b>	Liquid
<b>Storage instructions</b>	Shipped at 4°C. Store at -20°C. Stable for 12 months at -20°C.
<b>Storage buffer</b>	Preservative: 0.02% Sodium Azide Constituents: 50% Glycerol, PBS (without Mg <sup>2+</sup> and Ca <sup>2+</sup> ), 150mM Sodium chloride, pH 7.4
<b>Purity</b>	Immunogen affinity purified
<b>Clonality</b>	Polyclonal
<b>Isotype</b>	IgG

Applications

Our [Abpromise guarantee](#) covers the use of **ab65027** in the following tested applications.

The application notes include recommended starting dilutions; optimal dilutions/concentrations should be determined by the end user.

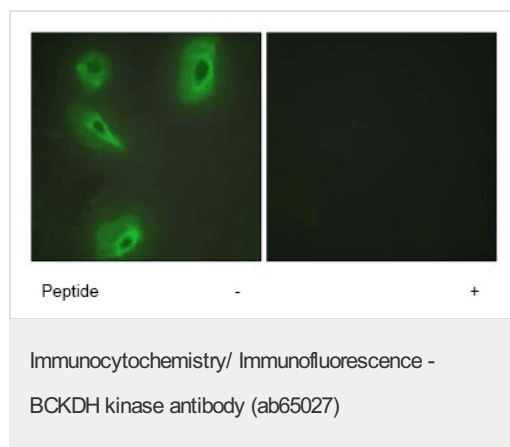
Application	Abreviews	Notes
ELISA		1/20000.
ICC/IF		1/500 - 1/1000.

Application	Abreviews	Notes
WB		1/500 - 1/1000. Detects a band of approximately 46 kDa (predicted molecular weight: 46 kDa).

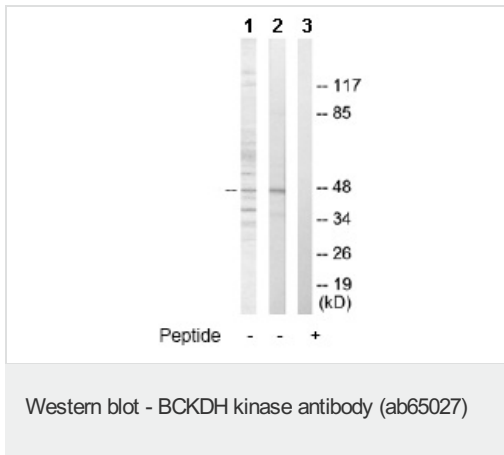
## Target

<b>Function</b>	Catalyzes the phosphorylation and inactivation of the branched-chain alpha-ketoacid dehydrogenase complex, the key regulatory enzyme of the valine, leucine and isoleucine catabolic pathways. Key enzyme that regulate the activity state of the BCKD complex.
<b>Tissue specificity</b>	Ubiquitous.
<b>Sequence similarities</b>	Belongs to the PDK/BCKDK protein kinase family. Contains 1 histidine kinase domain.
<b>Post-translational modifications</b>	Autophosphorylated.
<b>Cellular localization</b>	Mitochondrion matrix.

## Images



ab65027 at 1/500 - 1/1000 dilution staining BCKDH kinase in HeLa cells by Immunofluorescence, in the absence (-) or presence (+) of the immunising peptide.



**All lanes :** Anti-BCKDH kinase antibody (ab65027) at 1/500 dilution

**Lane 1 :** 293 cell extract

**Lane 2 :** Jurkat cell extract

**Lane 3 :** Jurkat cell extract with immunising peptide

**Predicted band size:** 46 kDa

**Observed band size:** 46 kDa

The amount of positive control loading for the WB is 5-30 ug of total protein. The amount of the peptide for the WB is 5-10 ug.

**Please note:** All products are "FOR RESEARCH USE ONLY AND ARE NOT INTENDED FOR DIAGNOSTIC OR THERAPEUTIC USE"

### Our Abpromise to you: Quality guaranteed and expert technical support

- Replacement or refund for products not performing as stated on the datasheet
- Valid for 12 months from date of delivery
- Response to your inquiry within 24 hours
- We provide support in Chinese, English, French, German, Japanese and Spanish
- Extensive multi-media technical resources to help you
- We investigate all quality concerns to ensure our products perform to the highest standards

If the product does not perform as described on this datasheet, we will offer a refund or replacement. For full details of the Abpromise, please visit <http://www.abcam.com/abpromise> or contact our technical team.

### Terms and conditions

- Guarantee only valid for products bought direct from Abcam or one of our authorized distributors