


Product datasheet

Anti-Cbx6 antibody ab65148

1 Image

Overview

Product name	Anti-Cbx6 antibody
Description	Rabbit polyclonal to Cbx6
Host species	Rabbit
Specificity	ab65148 detects endogenous levels of total Cbx6 protein.
Tested applications	Suitable for: ELISA, WB
Species reactivity	Reacts with: Human Predicted to work with: Mouse, Rat 
Immunogen	Synthetic peptide derived from an internal sequence of human Cbx6
Positive control	293 and HepG2 cell extracts.

Properties

Form	Liquid
Storage instructions	Shipped at 4°C. Store at -20°C. Stable for 12 months at -20°C.
Storage buffer	Preservative: 0.02% Sodium Azide Constituents: 50% Glycerol, PBS, 150mM Sodium chloride, pH 7.4
Purity	Immunogen affinity purified
Clonality	Polyclonal
Isotype	IgG

Applications

Our [Abpromise guarantee](#) covers the use of **ab65148** in the following tested applications.

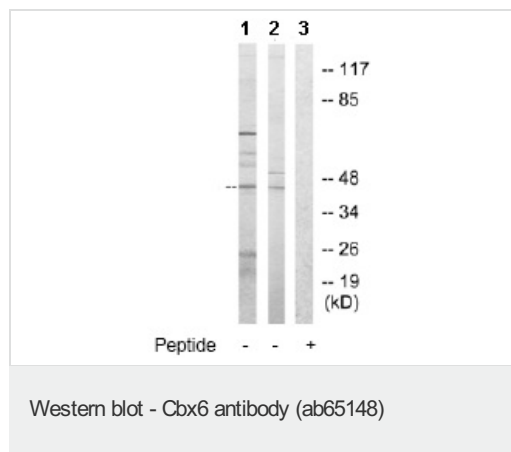
The application notes include recommended starting dilutions; optimal dilutions/concentrations should be determined by the end user.

Application	Abreviews	Notes
ELISA		1/20000.
WB		1/500 - 1/1000. Detects a band of approximately 44 kDa (predicted molecular weight: 44 kDa).

Target

Function	Involved in maintaining the transcriptionally repressive state of genes. Modifies chromatin, rendering it heritably changed in its expressibility.
Sequence similarities	Contains 1 chromo domain.
Cellular localization	Nucleus.

Images



All lanes : Anti-Cbx6 antibody (ab65148) at 1/500 dilution

Lane 1 : 293 cell extract

Lane 2 : HepG2 cell extract

Lane 3 : HepG2 cell extract with immunising peptide at 5 µg

Lysates/proteins at 5 µg per lane.

Predicted band size: 44 kDa

Observed band size: 44 kDa

Additional bands at: 25 kDa, 70 kDa. We are unsure as to the identity of these extra bands.

Please note: All products are "FOR RESEARCH USE ONLY AND ARE NOT INTENDED FOR DIAGNOSTIC OR THERAPEUTIC USE"

Our Abpromise to you: Quality guaranteed and expert technical support

- Replacement or refund for products not performing as stated on the datasheet
- Valid for 12 months from date of delivery
- Response to your inquiry within 24 hours
- We provide support in Chinese, English, French, German, Japanese and Spanish
- Extensive multi-media technical resources to help you
- We investigate all quality concerns to ensure our products perform to the highest standards

If the product does not perform as described on this datasheet, we will offer a refund or replacement. For full details of the Abpromise, please visit <http://www.abcam.com/abpromise> or contact our technical team.

Terms and conditions

- Guarantee only valid for products bought direct from Abcam or one of our authorized distributors