


Product datasheet

Anti-NFS1 antibody ab66272

1 Image

Overview

<b>Product name</b>	Anti-NFS1 antibody
<b>Description</b>	Rabbit polyclonal to NFS1
<b>Tested applications</b>	<b>Suitable for:</b> WB, ELISA
<b>Species reactivity</b>	<b>Reacts with:</b> Human <b>Predicted to work with:</b> Mouse, Rat, Rabbit, Horse, Chicken, Guinea pig, Cow, Cat, Dog, Pig, Saccharomyces cerevisiae 
<b>Immunogen</b>	Synthetic peptide: GIIDLKELEA AIQPDTSLVS VMTVNNEIGV KQPIAEIGRI CSSRKVYFHT, corresponding to internal sequence amino acids 182-231 of Human NFS1 <a href="#">Run BLAST with ExPASy</a> <a href="#">Run BLAST with NCBI</a>
<b>Positive control</b>	HepG2 cell lysate

Properties

<b>Form</b>	Liquid
<b>Storage instructions</b>	Shipped at 4°C. Upon delivery aliquot and store at -20°C or -80°C. Avoid repeated freeze / thaw cycles.
<b>Storage buffer</b>	Preservative: None Constituents: 2% Sucrose, PBS
<b>Purity</b>	Protein A purified
<b>Clonality</b>	Polyclonal
<b>Isotype</b>	IgG

Applications

Our [Abpromise guarantee](#) covers the use of **ab66272** in the following tested applications.

The application notes include recommended starting dilutions; optimal dilutions/concentrations should be determined by the end user.

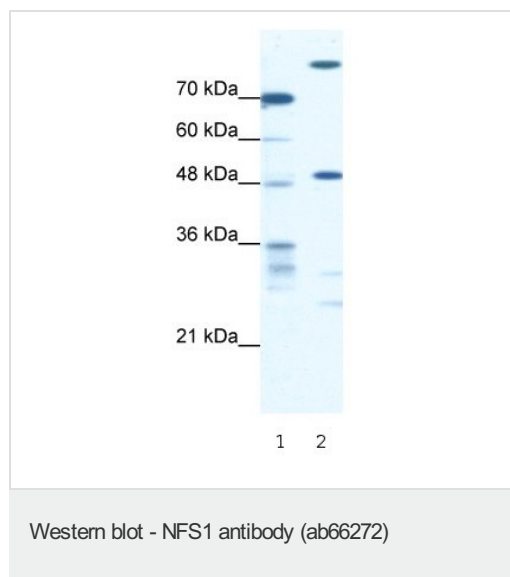
Application	Abreviews	Notes
WB		Use a concentration of 0.3125 µg/ml. Detects a band of approximately 50 kDa (predicted molecular weight: 50 kDa). Good results were obtained when blocked with 5% non-fat dry milk in 0.05% PBS-T.

Application	Abreviews	Notes
ELISA		Use at an assay dependent concentration. Titre using peptide based assay: 1:312500.

## Target

<b>Function</b>	Catalyzes the removal of elemental sulfur from cysteine to produce alanine. It supplies the inorganic sulfur for iron-sulfur (Fe-S) clusters. May be involved in the biosynthesis of molybdenum cofactor.
<b>Tissue specificity</b>	Predominantly expressed in heart and skeletal muscle. Also found in brain, liver and pancreas.
<b>Sequence similarities</b>	Belongs to the class-V pyridoxal-phosphate-dependent aminotransferase family. NifS/lscS subfamily.
<b>Cellular localization</b>	Cytoplasm. Nucleus and Mitochondrion.

## Images



**All lanes** : Anti-NFS1 antibody (ab66272) at 0.31 µg/ml (in 5% skim milk / PBS buffer)

**Lane 1** : markers

**Lane 2** : HepG2 cell lysate at 10 µg

### Secondary

HRP conjugated anti-Rabbit IgG at 1/50000 dilution

**Predicted band size** : 50 kDa

**Observed band size** : 50 kDa

**Additional bands at** : 25 kDa, 30 kDa, >70 kDa. We are unsure as to the identity of these extra bands.

**Please note:** All products are "FOR RESEARCH USE ONLY AND ARE NOT INTENDED FOR DIAGNOSTIC OR THERAPEUTIC USE"

## Our Abpromise to you: Quality guaranteed and expert technical support

- Replacement or refund for products not performing as stated on the datasheet
- Valid for 12 months from date of delivery
- Response to your inquiry within 24 hours
- We provide support in Chinese, English, French, German, Japanese and Spanish
- Extensive multi-media technical resources to help you

- We investigate all quality concerns to ensure our products perform to the highest standards

If the product does not perform as described on this datasheet, we will offer a refund or replacement. For full details of the Abpromise, please visit <http://www.abcam.com/abpromise> or contact our technical team.

### **Terms and conditions**

---

- Guarantee only valid for products bought direct from Abcam or one of our authorized distributors