

Product datasheet

Anti-PROP1 antibody ab68065

1 Image

Overview

<b>Product name</b>	Anti-PROP1 antibody
<b>Description</b>	Mouse polyclonal to PROP1
<b>Tested applications</b>	<b>Suitable for:</b> WB
<b>Species reactivity</b>	<b>Reacts with:</b> Human
<b>Immunogen</b>	Full length protein, corresponding to amino acids 1-226 of Human PROP1
<b>Positive control</b>	PROP1 transfected mammalian cell lysate

Properties

<b>Form</b>	Liquid
<b>Storage instructions</b>	Shipped at 4°C. Upon delivery aliquot and store at -20°C or -80°C. Avoid repeated freeze / thaw cycles.
<b>Storage buffer</b>	Preservative: None Constituents: Whole serum
<b>Purity</b>	Whole antiserum
<b>Clonality</b>	Polyclonal
<b>Isotype</b>	IgG

Applications

Our [Abpromise guarantee](#) covers the use of **ab68065** in the following tested applications.

The application notes include recommended starting dilutions; optimal dilutions/concentrations should be determined by the end user.

Application	Abreviews	Notes
WB		1/500 - 1/1000. Detects a band of approximately 27 kDa (predicted molecular weight: 25 kDa).

Target

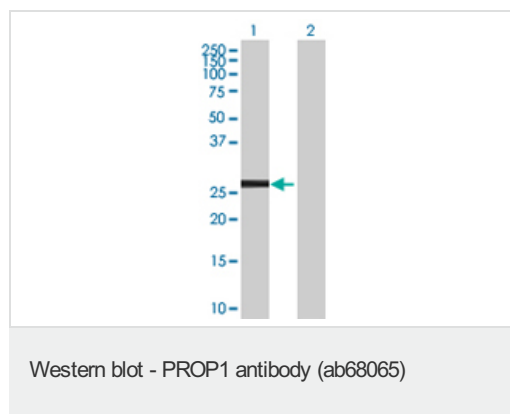
**Relevance** PROP1 belongs to the paired homeobox family. It contains one homeobox DNA-binding

domain. PROP1 is possibly involved in the ontogenesis of pituitary gonadotropes, as well as somatotropes, lactotropes and caudomedial thyrotropes. It is expressed specifically in embryonic pituitary. Defects in PROP1 are a cause of combined pituitary hormone deficiency (CPHD). This is characterized by impaired production of growth hormone (GH) and one or more of the other five anterior pituitary hormones.

#### Cellular localization

Nucleus

#### Images



**All lanes :** Anti-PROP1 antibody (ab68065)  
at 1/500 dilution

**Lane 1 :** PROP1 transfected 293T cell lysate

**Lane 2 :** Non-transfected 293T cell lysate

Lysates/proteins at 25 µg per lane.

#### Secondary

Goat Anti-Mouse IgG (H&L)-HRP Conjugate at  
1/2500 dilution

**Predicted band size :** 25 kDa

**Observed band size :** 27 kDa

**Please note:** All products are "FOR RESEARCH USE ONLY AND ARE NOT INTENDED FOR DIAGNOSTIC OR THERAPEUTIC USE"

#### Our Abpromise to you: Quality guaranteed and expert technical support

- Replacement or refund for products not performing as stated on the datasheet
- Valid for 12 months from date of delivery
- Response to your inquiry within 24 hours
- We provide support in Chinese, English, French, German, Japanese and Spanish
- Extensive multi-media technical resources to help you
- We investigate all quality concerns to ensure our products perform to the highest standards

If the product does not perform as described on this datasheet, we will offer a refund or replacement. For full details of the Abpromise, please visit <http://www.abcam.com/abpromise> or contact our technical team.

#### Terms and conditions

- Guarantee only valid for products bought direct from Abcam or one of our authorized distributors