

Product datasheet

Anti-AASDHPPT antibody ab68316

1 Image

Overview

| | |
|----------------------------|---|
| Product name | Anti-AASDHPPT antibody |
| Description | Mouse polyclonal to AASDHPPT |
| Host species | Mouse |
| Specificity | This antibody is reactive against mammalian transfected lysate. |
| Tested applications | Suitable for: WB |
| Species reactivity | Reacts with: Human |
| Immunogen | AASDHPPT (NP_056238.2, 1 a.a. ~ 309 a.a) full-length human protein. |
| Positive control | AASDHPPT transfected 293T cell lysate |

Properties

| | |
|-----------------------------|---|
| Form | Liquid |
| Storage instructions | Shipped at 4°C. Upon delivery aliquot and store at -20°C or -80°C. Avoid repeated freeze / thaw cycles. |
| Storage buffer | Preservative: None Constituents: Whole serum |
| Purity | Whole antiserum |
| Clonality | Polyclonal |
| Isotype | IgG |

Applications

Our [Abpromise guarantee](#) covers the use of **ab68316** in the following tested applications.

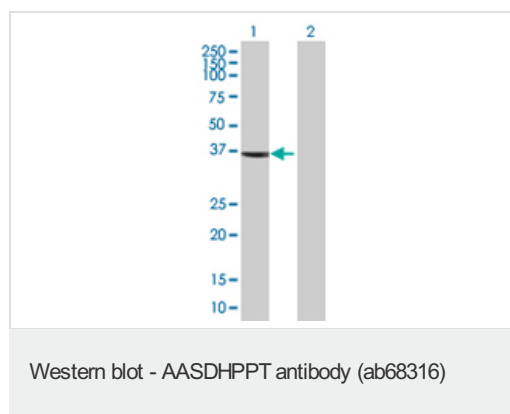
The application notes include recommended starting dilutions; optimal dilutions/concentrations should be determined by the end user.

| Application | Abreviews | Notes |
|-------------|-----------|--|
| WB | | 1/500 - 1/1000. Detects a band of approximately 36 kDa (predicted molecular weight: 36 kDa). |

Target

| | |
|---|---|
| Function | Catalyzes the post-translational modification of target proteins by phosphopantetheine. Can transfer the 4'-phosphopantetheine moiety from coenzyme A to a serine residue of a broad range of acceptors, such as the acyl carrier domain of FASN. |
| Tissue specificity | Detected in heart, skeletal muscle, placenta, testis, brain, pancreas, liver and kidney. |
| Sequence similarities | Belongs to the P-Pant transferase superfamily. AcpS family. |
| Post-translational modifications | Phosphorylated upon DNA damage, probably by ATM or ATR. |
| Cellular localization | Cytoplasm. |

Images



All lanes : Anti-AASDHPPT antibody (ab68316) at 1/500 dilution

Lane 1 : AASDHPPT transfected 293T cell lysate

Lane 2 : Non-transfected 293T cell lysate

Lysates/proteins at 25 µg per lane.

Secondary

All lanes : Goat Anti-Mouse IgG (H&L)-HRP Conjugate at 1/2500 dilution

Predicted band size: 36 kDa

Observed band size: 36 kDa

Please note: All products are "FOR RESEARCH USE ONLY AND ARE NOT INTENDED FOR DIAGNOSTIC OR THERAPEUTIC USE"

Our Abpromise to you: Quality guaranteed and expert technical support

- Replacement or refund for products not performing as stated on the datasheet
- Valid for 12 months from date of delivery
- Response to your inquiry within 24 hours
- We provide support in Chinese, English, French, German, Japanese and Spanish
- Extensive multi-media technical resources to help you
- We investigate all quality concerns to ensure our products perform to the highest standards

If the product does not perform as described on this datasheet, we will offer a refund or replacement. For full details of the Abpromise, please visit <http://www.abcam.com/abpromise> or contact our technical team.

Terms and conditions

- Guarantee only valid for products bought direct from Abcam or one of our authorized distributors