

Product datasheet

Anti-SEMA6C antibody ab68471

1 Image

Overview

<b>Product name</b>	Anti-SEMA6C antibody
<b>Description</b>	Mouse polyclonal to SEMA6C
<b>Tested applications</b>	<b>Suitable for:</b> WB
<b>Species reactivity</b>	<b>Reacts with:</b> Human
<b>Immunogen</b>	SEMA6C (NP_112175, 1 a.a. ~ 930 a.a) full-length human protein.
<b>Positive control</b>	SEMA6C transfected 293T lysate.

Properties

<b>Form</b>	Liquid
<b>Storage instructions</b>	Shipped at 4°C. Upon delivery aliquot and store at -20°C or -80°C. Avoid repeated freeze / thaw cycles.
<b>Storage buffer</b>	Preservative: None Constituents: PBS, pH 7.2
<b>Purity</b>	Protein A purified
<b>Clonality</b>	Polyclonal
<b>Isotype</b>	IgG

Applications

Our [Abpromise guarantee](#) covers the use of **ab68471** in the following tested applications.

The application notes include recommended starting dilutions; optimal dilutions/concentrations should be determined by the end user.

Application	Abreviews	Notes
WB		1/500 - 1/1000. Detects a band of approximately 130 kDa (predicted molecular weight: 100 kDa).

Target

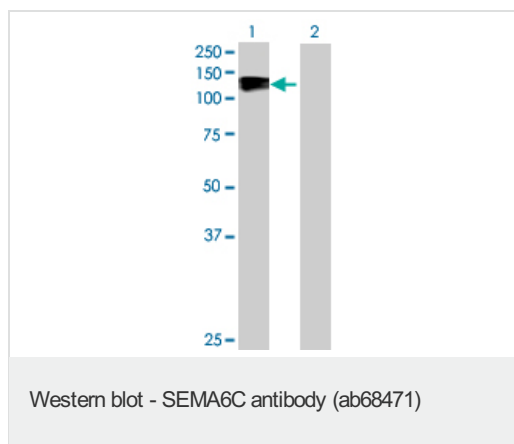
<b>Relevance</b>	SEMA6C belongs to a subfamily characterized by an extracellular semaphorin domain, a transmembrane domain, and a long cytoplasmic tail. Members of this class can repel sympathetic and dorsal root ganglion axons in vitro, consistent with a traditional role as guidance
------------------	---

signals. SEMA6C shows growth cone collapsing activity on dorsal root ganglion (DRG) neurons in vitro and may be a stop signal for the DRG neurons in their target areas, and possibly also for other neurons. SEMA6C may also be involved in the maintenance and remodeling of neuronal connections.

## Cellular localization

Membrane; Single-pass type I membrane protein.

## Anti-SEMA6C antibody images



**All lanes** : Anti-SEMA6C antibody (ab68471)  
at 1/500 dilution

**Lane 1** : SEMA6C transfected 293T lysate

**Lane 2** : Non-transfected 293T lysate

Lysates/proteins at 25 µg per lane.

### Secondary

Goat Anti-Mouse IgG (H&L)-HRP at 1/2500  
dilution

**Predicted band size** : 100 kDa

**Observed band size** : 130 kDa

**Please note:** All products are "FOR RESEARCH USE ONLY AND ARE NOT INTENDED FOR DIAGNOSTIC OR THERAPEUTIC USE"

## Our Abpromise to you: Quality guaranteed and expert technical support

- Replacement or refund for products not performing as stated on the datasheet
- Valid for 12 months from date of delivery
- Response to your inquiry within 24 hours
- We provide support in Chinese, English, French, German, Japanese and Spanish
- Extensive multi-media technical resources to help you
- We investigate all quality concerns to ensure our products perform to the highest standards

If the product does not perform as described on this datasheet, we will offer a refund or replacement. For full details of the Abpromise, please visit <http://www.abcam.com/abpromise> or contact our technical team.

## Terms and conditions

- Guarantee only valid for products bought direct from Abcam or one of our authorized distributors