

## Product datasheet

# Anti-DBF4B antibody ab69154

1 Image

### Overview

<b>Product name</b>	Anti-DBF4B antibody
<b>Description</b>	Mouse polyclonal to DBF4B
<b>Host species</b>	Mouse
<b>Tested applications</b>	<b>Suitable for:</b> WB
<b>Species reactivity</b>	<b>Reacts with:</b> Human
<b>Immunogen</b>	Full length human DBF4B protein (NP_079380.1)
<b>Positive control</b>	DBF4B transfected 293T cell lysate.

### Properties

<b>Form</b>	Liquid
<b>Storage instructions</b>	Shipped at 4°C. Upon delivery aliquot and store at -20°C or -80°C. Avoid repeated freeze / thaw cycles.
<b>Storage buffer</b>	Preservative: None Constituents: Whole serum
<b>Purity</b>	Whole antiserum
<b>Clonality</b>	Polyclonal
<b>Isotype</b>	IgG

### Applications

Our [Abpromise guarantee](#) covers the use of **ab69154** in the following tested applications.

The application notes include recommended starting dilutions; optimal dilutions/concentrations should be determined by the end user.

Application	Abreviews	Notes
-------------	-----------	-------

WB

<b>Application notes</b>	WB: 1/500 - 1/1000. Detects a band of approximately 18 kDa (predicted molecular weight: Isoform 4, 18 kDa; Isoform 1, 67 kDa).
--------------------------	--

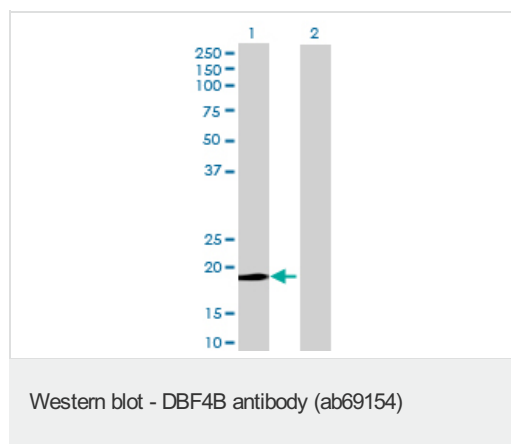
Not yet tested in other applications.

Optimal dilutions/concentrations should be determined by the end user.

## Target

<b>Function</b>	Regulatory subunit for CDC7 which activates its kinase activity thereby playing a central role in DNA replication and cell proliferation. Required for progression of S and M phases. The complex CDC7-DBF4B selectively phosphorylates MCM2 subunit at 'Ser-40' and then is involved in regulating the initiation of DNA replication during cell cycle.
<b>Tissue specificity</b>	Widely expressed. Highly expressed in testis.
<b>Sequence similarities</b>	Contains 1 BRCT domain. Contains 1 DBF4-type zinc finger.
<b>Developmental stage</b>	Increases as cells enter in S phase through G2/M phase. The protein has a short half-life (at protein level).
<b>Post-translational modifications</b>	Phosphorylated.
<b>Cellular localization</b>	Nucleus. Predominantly found in soluble fraction but not in the chromatin-bound fraction.

## Images



**All lanes :** Anti-DBF4B antibody (ab69154) at 1/500 dilution

**Lane 1 :** DBF4B transfected 293T cell lysate

**Lane 2 :** Non-transfected 293T cell lysate

Lysates/proteins at 25 µg per lane.

### Secondary

**All lanes :** Goat Anti-Mouse IgG (H&L)-HRP Conjugate at 1/2500 dilution

**Predicted band size:** 18 kDa

**Observed band size:** 18 kDa

**Please note:** All products are "FOR RESEARCH USE ONLY AND ARE NOT INTENDED FOR DIAGNOSTIC OR THERAPEUTIC USE"

## Our Promise to you: Quality guaranteed and expert technical support

- Replacement or refund for products not performing as stated on the datasheet
- Valid for 12 months from date of delivery
- Response to your inquiry within 24 hours

- We provide support in Chinese, English, French, German, Japanese and Spanish
- Extensive multi-media technical resources to help you
- We investigate all quality concerns to ensure our products perform to the highest standards

If the product does not perform as described on this datasheet, we will offer a refund or replacement. For full details of the Abpromise, please visit <http://www.abcam.com/abpromise> or contact our technical team.

### **Terms and conditions**

---

- Guarantee only valid for products bought direct from Abcam or one of our authorized distributors