

## Product datasheet

# Anti-BBS10 antibody ab69200

1 Image

### Overview

<b>Product name</b>	Anti-BBS10 antibody
<b>Description</b>	Mouse polyclonal to BBS10
<b>Tested applications</b>	<b>Suitable for:</b> WB
<b>Species reactivity</b>	<b>Reacts with:</b> Human
<b>Immunogen</b>	Full length human BBS10 protein (AAH13795.1)
<b>Positive control</b>	FLJ23560 transfected 293T cell lysate

### Properties

<b>Form</b>	Liquid
<b>Storage instructions</b>	Shipped at 4°C. Upon delivery aliquot and store at -20°C or -80°C. Avoid repeated freeze / thaw cycles.
<b>Storage buffer</b>	Preservative: None Constituents: Whole serum
<b>Purity</b>	Whole antiserum
<b>Clonality</b>	Polyclonal
<b>Isotype</b>	IgG

### Applications

Our [Abpromise guarantee](#) covers the use of **ab69200** in the following tested applications.

The application notes include recommended starting dilutions; optimal dilutions/concentrations should be determined by the end user.

Application	Abreviews	Notes
WB		1/500 - 1/1000. Detects a band of approximately 12 kDa (predicted molecular weight: 81 kDa).

### Target

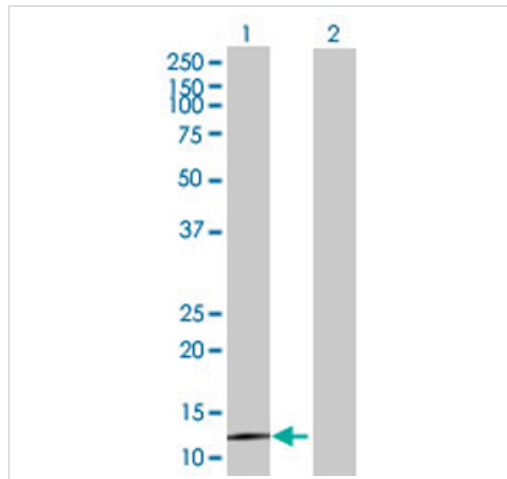
**Relevance** BBS10 belongs to the TCP-1 chaperonin family. It is a probable molecular chaperone; assist the

folding of proteins upon ATP hydrolysis. Defects in BBS10 are the cause of Bardet-Biedl syndrome type 10 (BBS10) [MIM:209900]. Bardet-Biedl syndrome (BBS) is a genetically heterogeneous, autosomal recessive disorder characterized by usually severe pigmentary retinopathy, early onset obesity, polydactyly, hypogenitalism, renal malformation and mental retardation.

### Cellular localization

Cell projection; cilium. Note: Located within the basal body of the primary cilium of differentiating preadipocytes.

### Images



Western blot - BBS10 antibody (ab69200)

**All lanes** : Anti-BBS10 antibody (ab69200) at 1/500 dilution

**Lane 1** : BBS10 transfected 293T cell lysate

**Lane 2** : Non-transfected 293T cell lysate

Lysates/proteins at 25 µg per lane.

#### Secondary

Goat Anti-Mouse IgG (H&L)-HRP Conjugate at 1/2500 dilution

**Predicted band size** : 81 kDa

**Observed band size** : 12 kDa

**Please note:** All products are "FOR RESEARCH USE ONLY AND ARE NOT INTENDED FOR DIAGNOSTIC OR THERAPEUTIC USE"

### Our Abpromise to you: Quality guaranteed and expert technical support

- Replacement or refund for products not performing as stated on the datasheet
- Valid for 12 months from date of delivery
- Response to your inquiry within 24 hours
- We provide support in Chinese, English, French, German, Japanese and Spanish
- Extensive multi-media technical resources to help you
- We investigate all quality concerns to ensure our products perform to the highest standards

If the product does not perform as described on this datasheet, we will offer a refund or replacement. For full details of the Abpromise, please visit <http://www.abcam.com/abpromise> or contact our technical team.

### Terms and conditions

- Guarantee only valid for products bought direct from Abcam or one of our authorized distributors