

Product datasheet

Anti-LRFN1 antibody ab69662

[2 Images](#)

Overview

Product name	Anti-LRFN1 antibody
Description	Mouse polyclonal to LRFN1
Host species	Mouse
Tested applications	Suitable for: WB
Species reactivity	Reacts with: Human
Immunogen	Full length human LRFN1 protein (XP_290842)
Positive control	Human kidney tissue lysate. LRFN1 transfected 293T cell lysate.

Properties

Form	Liquid
Storage instructions	Shipped at 4°C. Upon delivery aliquot and store at -20°C or -80°C. Avoid repeated freeze / thaw cycles.
Storage buffer	Preservative: None Constituents: 1X PBS, pH 7.2
Purity	Protein G purified
Clonality	Polyclonal
Isotype	IgG

Applications

Our [Abpromise guarantee](#) covers the use of **ab69662** in the following tested applications.

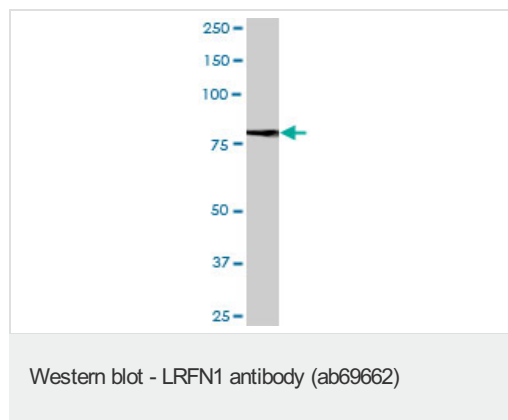
The application notes include recommended starting dilutions; optimal dilutions/concentrations should be determined by the end user.

Application	Abreviews	Notes
WB		1/500 - 1/1000. Detects a band of approximately 78 kDa (predicted molecular weight: 82 kDa).

Target

Function	Promotes neurite outgrowth in hippocampal neurons. Involved in the regulation and maintenance of excitatory synapses. Induces the clustering of excitatory postsynaptic proteins, including DLG4, DLGAP1, GRIA1 and GRIN1.
Sequence similarities	<p>Belongs to the LRFN family.</p> <p>Contains 1 fibronectin type-III domain.</p> <p>Contains 1 Ig-like (immunoglobulin-like) domain.</p> <p>Contains 7 LRR (leucine-rich) repeats.</p> <p>Contains 1 LRRCT domain.</p> <p>Contains 1 LRRNT domain.</p>
Domain	The PDZ-binding motif is required for neurite outgrowth promotion and for DLG1-, DLG3- and DLG4-binding.
Post-translational modifications	Glycosylated.
Cellular localization	Membrane. Cell junction, synapse. Cell junction, synapse, postsynaptic cell membrane, postsynaptic density. Detected in excitatory, but not inhibitory, synaptic plasma membrane.

Images



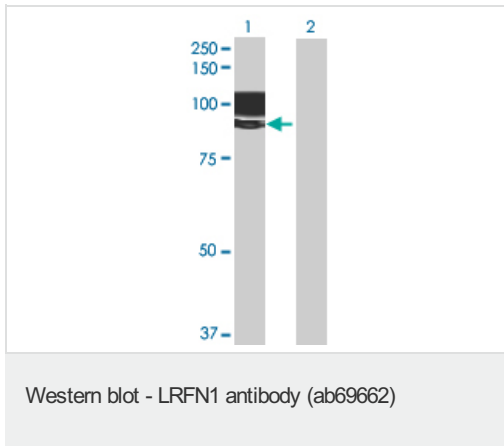
Anti-LRFN1 antibody (ab69662) at 1/500 dilution + Human kidney tissue lysate at 25 µg

Secondary

Goat Anti-Mouse IgG (H&L)-HRP Conjugate at 1/2500 dilution

Predicted band size: 82 kDa

Observed band size: 78 kDa



All lanes : Anti-LRFN1 antibody (ab69662) at 1/500 dilution

Lane 1 : LRFN1 transfected 293T cell lysate

Lane 2 : Non-transfected 293T cell lysate

Lysates/proteins at 25 µg per lane.

Secondary

All lanes : Goat Anti-Mouse IgG (H&L)-HRP Conjugate at 1/2500 dilution

Predicted band size: 82 kDa

Observed band size: 82 kDa

Additional bands at: 100 kDa. We are unsure as to the identity of these extra bands.

Please note: All products are "FOR RESEARCH USE ONLY AND ARE NOT INTENDED FOR DIAGNOSTIC OR THERAPEUTIC USE"

Our Abpromise to you: Quality guaranteed and expert technical support

- Replacement or refund for products not performing as stated on the datasheet
- Valid for 12 months from date of delivery
- Response to your inquiry within 24 hours
- We provide support in Chinese, English, French, German, Japanese and Spanish
- Extensive multi-media technical resources to help you
- We investigate all quality concerns to ensure our products perform to the highest standards

If the product does not perform as described on this datasheet, we will offer a refund or replacement. For full details of the Abpromise, please visit <http://www.abcam.com/abpromise> or contact our technical team.

Terms and conditions

- Guarantee only valid for products bought direct from Abcam or one of our authorized distributors