

## Product datasheet

# Anti-GTF2A1 antibody ab69762

1 Image

### Overview

<b>Product name</b>	Anti-GTF2A1 antibody
<b>Description</b>	Rabbit polyclonal to GTF2A1
<b>Host species</b>	Rabbit
<b>Tested applications</b>	<b>Suitable for:</b> WB, ELISA
<b>Species reactivity</b>	<b>Reacts with:</b> Mouse, Human <b>Predicted to work with:</b> Rat
<b>Immunogen</b>	Synthetic peptide (Human) derived from the C-terminus of GTF2A1.
<b>Positive control</b>	Extracts from RAW264.7 cells

### Properties

<b>Form</b>	Liquid
<b>Storage instructions</b>	Shipped at 4°C. Upon delivery aliquot and store at -20°C. Avoid freeze / thaw cycles.
<b>Storage buffer</b>	Preservative: 0.02% Sodium Azide Constituents: 50% Glycerol, PBS (without Mg <sup>2+</sup> and Ca <sup>2+</sup> ), 150mM Sodium chloride, pH 7.4
<b>Purity</b>	Immunogen affinity purified
<b>Clonality</b>	Polyclonal
<b>Isotype</b>	IgG

### Applications

Our [Abpromise guarantee](#) covers the use of **ab69762** in the following tested applications.

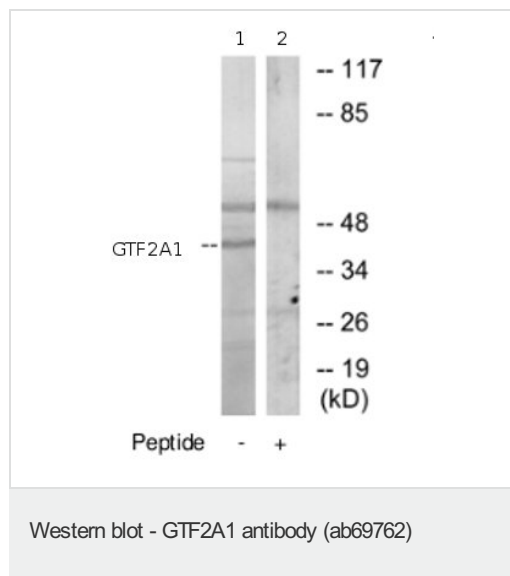
The application notes include recommended starting dilutions; optimal dilutions/concentrations should be determined by the end user.

Application	Abreviews	Notes
WB		1/500 - 1/1000. Detects a band of approximately 41 kDa (predicted molecular weight: 41 kDa).
ELISA		1/40000.

## Target

<b>Function</b>	TFIIA is a component of the transcription machinery of RNA polymerase II and plays an important role in transcriptional activation. TFIIA in a complex with TBP mediates transcriptional activity.
<b>Sequence similarities</b>	Belongs to the TFIIA subunit 1 family.
<b>Post-translational modifications</b>	The alpha and beta subunits are postranslationally produced from the precursor form by TASP1. The cleavage promotes proteasomal degradation.
<b>Cellular localization</b>	Nucleus.

## Images



**All lanes :** Anti-GTF2A1 antibody (ab69762)  
at 1/500 dilution

**Lane 1 :** extracts from RAW264.7 cells

**Lane 2 :** extracts from RAW264.7 cells with  
immunizing peptide at 10 µg

Lysates/proteins at 15 µg per lane.

**Predicted band size:** 41 kDa

**Observed band size:** 41 kDa

**Additional bands at:** 55 kDa, 70 kDa. We  
are unsure as to the identity of these extra  
bands.

**Please note:** All products are "FOR RESEARCH USE ONLY AND ARE NOT INTENDED FOR DIAGNOSTIC OR THERAPEUTIC USE"

## Our Abpromise to you: Quality guaranteed and expert technical support

- Replacement or refund for products not performing as stated on the datasheet
- Valid for 12 months from date of delivery
- Response to your inquiry within 24 hours
- We provide support in Chinese, English, French, German, Japanese and Spanish
- Extensive multi-media technical resources to help you
- We investigate all quality concerns to ensure our products perform to the highest standards

If the product does not perform as described on this datasheet, we will offer a refund or replacement. For full details of the Abpromise, please visit <http://www.abcam.com/abpromise> or contact our technical team.

## Terms and conditions

- Guarantee only valid for products bought direct from Abcam or one of our authorized distributors