

## Product datasheet

# Anti-SmarcAL1 antibody ab69900

★ ★ ★ ☆ ☆ 2 Abreviews  
 [1 References](#)  
 [1 Image](#)

### Overview

<b>Product name</b>	Anti-SmarcAL1 antibody
<b>Description</b>	Rabbit polyclonal to SmarcAL1
<b>Tested applications</b>	<b>Suitable for:</b> WB, ELISA
<b>Species reactivity</b>	<b>Reacts with:</b> Human <b>Predicted to work with:</b> Mouse, Rat, Rabbit, Horse, Guinea pig, Cow, Cat, Dog
<b>Immunogen</b>	A region within synthetic peptide: FDPGSASGTS GSSSQNMGDT LDESSLTASP QKKRRFEFFD NWDSFTSPL, corresponding to C terminal amino acids 906-954 of Human SmarcAL1 <a href="#">Run BLAST with ExPASy</a> <a href="#">Run BLAST with NCBI</a>
<b>Positive control</b>	721 B lymphoblast cell lysate.

### Properties

<b>Form</b>	Liquid
<b>Storage instructions</b>	Shipped at 4°C. Upon delivery aliquot and store at -20°C. Avoid freeze / thaw cycles.
<b>Storage buffer</b>	Preservative: None Constituents: 2% Sucrose, PBS
<b>Purity</b>	Protein A purified
<b>Clonality</b>	Polyclonal
<b>Isotype</b>	IgG

### Applications

Our [Abpromise guarantee](#) covers the use of **ab69900** in the following tested applications.

The application notes include recommended starting dilutions; optimal dilutions/concentrations should be determined by the end user.

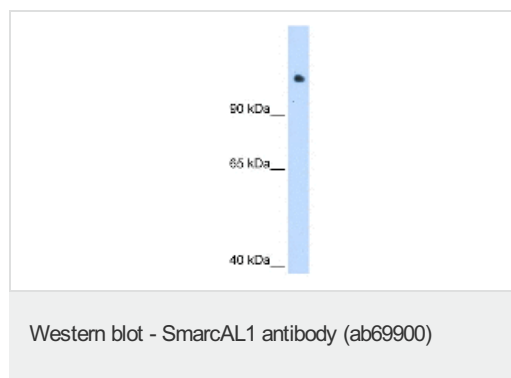
Application	Abreviews	Notes
WB	<span>★ ★ ★ ☆ ☆</span>	Use a concentration of 1.25 µg/ml. Detects a band of approximately 106 kDa (predicted molecular weight: 106 kDa). Good results were obtained when blocked with 5% non-fat dry milk in 0.05% PBS-T.

Application	Abreviews	Notes
ELISA		Use at an assay dependent concentration. ELISA titre using peptide based assay: 1/312500.

## Target

<b>Function</b>	ATP-dependent annealing helicase that catalyzes the rewinding of the stably unwound DNA. Rewinds single-stranded DNA bubbles that are stably bound by replication protein A (RPA). Acts throughout the genome to reanneal stably unwound DNA, performing the opposite reaction of many enzymes, such as helicases and polymerases, that unwind DNA.
<b>Tissue specificity</b>	Ubiquitously expressed, with high levels in testis.
<b>Involvement in disease</b>	Defects in SMARCAL1 are a cause of Schimke immuno-osseous dysplasia (SIOD) [MIM:242900]. SIOD causes spondyloepiphyseal dysplasia, renal dysfunction and T-cell immunodeficiency. Approximately half of all patients also exhibit hyperthyroidism, while around half also exhibit episodal cerebral ischemia.
<b>Sequence similarities</b>	Belongs to the SNF2/RAD54 helicase family. SMARCAL1 subfamily. Contains 2 HARP domains. Contains 1 helicase ATP-binding domain. Contains 1 helicase C-terminal domain.
<b>Cellular localization</b>	Nucleus.

## Images



Anti-Smarcal1 antibody (ab69900) at 1.25 µg/ml + 721 B lymphoblast cell lysate at 10 µg

### Secondary

anti-Rabbit IgG HRP at 1/50000 dilution

**Predicted band size** : 106 kDa

**Observed band size** : 106 kDa

**Please note:** All products are "FOR RESEARCH USE ONLY AND ARE NOT INTENDED FOR DIAGNOSTIC OR THERAPEUTIC USE"

## Our Abpromise to you: Quality guaranteed and expert technical support

- Replacement or refund for products not performing as stated on the datasheet
- Valid for 12 months from date of delivery
- Response to your inquiry within 24 hours
- We provide support in Chinese, English, French, German, Japanese and Spanish
- Extensive multi-media technical resources to help you

- We investigate all quality concerns to ensure our products perform to the highest standards

If the product does not perform as described on this datasheet, we will offer a refund or replacement. For full details of the Abpromise, please visit <http://www.abcam.com/abpromise> or contact our technical team.

### **Terms and conditions**

---

- Guarantee only valid for products bought direct from Abcam or one of our authorized distributors