

Product datasheet

Anti-IGLC2 antibody ab70044

1 Image

Overview

Product name	Anti-IGLC2 antibody
Description	Mouse polyclonal to IGLC2
Tested applications	Suitable for: WB
Species reactivity	Reacts with: Human
Immunogen	Full length native protein (purified), corresponding to amino acids 1-235 of Human IGLC2

Properties

Form	Liquid
Storage instructions	Shipped at 4°C. Upon delivery aliquot. Store at -20°C or -80°C. Avoid freeze / thaw cycle.
Storage buffer	Preservative: None Constituents: Whole serum
Purity	Whole antiserum
Clonality	Polyclonal
Isotype	IgG

Applications

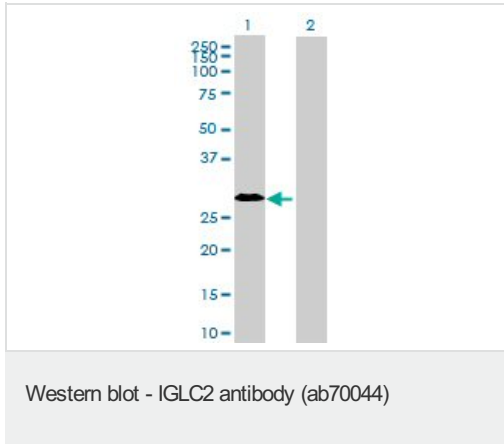
Our [Abpromise guarantee](#) covers the use of **ab70044** in the following tested applications.

The application notes include recommended starting dilutions; optimal dilutions/concentrations should be determined by the end user.

Application	Abreviews	Notes
WB		1/500 - 1/1000. Detects a band of approximately 24 kDa (predicted molecular weight: 11 kDa).

Target

Images



All lanes : Anti-IGLC2 antibody (ab70044) at 1/500 dilution

Lane 1 : IGLC2-transfected 293T cell line lysate

Lane 2 : non-transfected 293T cell line lysate

Predicted band size : 11 kDa

Observed band size : 24 kDa

Please note: All products are "FOR RESEARCH USE ONLY AND ARE NOT INTENDED FOR DIAGNOSTIC OR THERAPEUTIC USE"

Our Abpromise to you: Quality guaranteed and expert technical support

- Replacement or refund for products not performing as stated on the datasheet
- Valid for 12 months from date of delivery
- Response to your inquiry within 24 hours
- We provide support in Chinese, English, French, German, Japanese and Spanish
- Extensive multi-media technical resources to help you
- We investigate all quality concerns to ensure our products perform to the highest standards

If the product does not perform as described on this datasheet, we will offer a refund or replacement. For full details of the Abpromise, please visit <http://www.abcam.com/abpromise> or contact our technical team.

Terms and conditions

- Guarantee only valid for products bought direct from Abcam or one of our authorized distributors