

Product datasheet

Anti-MARK1 antibody ab70128

[2 Images](#)

Overview

Product name	Anti-MARK1 antibody
Description	Rabbit polyclonal to MARK1
Host species	Rabbit
Tested applications	Suitable for: WB, ELISA
Species reactivity	Reacts with: Human Predicted to work with: Mouse, Rat
Immunogen	Synthetic peptide derived from an internal region of human MARK1.
Positive control	Extracts from HeLa cells.

Properties

Form	Liquid
Storage instructions	Shipped at 4°C. Store at -20°C. Stable for 12 months at -20°C.
Storage buffer	Preservative: 0.02% Sodium Azide Constituents: 50% Glycerol, PBS (without Mg ²⁺ and Ca ²⁺), 150mM Sodium chloride, pH 7.4
Purity	Immunogen affinity purified
Clonality	Polyclonal
Isotype	IgG

Applications

Our [Abpromise guarantee](#) covers the use of **ab70128** in the following tested applications.

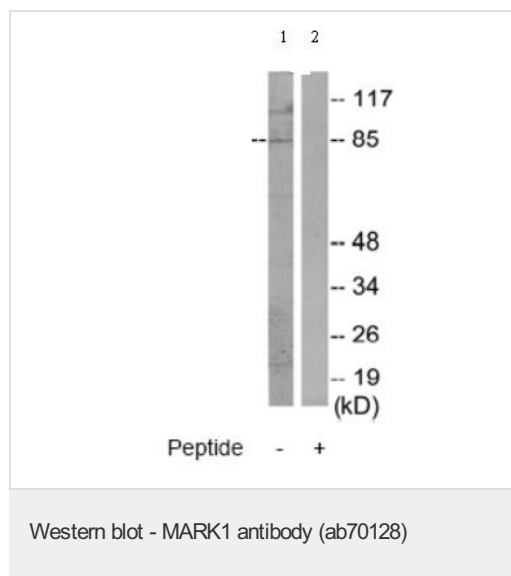
The application notes include recommended starting dilutions; optimal dilutions/concentrations should be determined by the end user.

Application	Abreviews	Notes
WB		1/500 - 1/1000. Detects a band of approximately 85 kDa (predicted molecular weight: 89 kDa).
ELISA		1/10000.

Target

Function	May play a role in cytoskeletal stability.
Tissue specificity	Highly expressed in heart, skeletal muscle, brain, fetal brain and fetal kidney.
Sequence similarities	Belongs to the protein kinase superfamily. CAMK Ser/Thr protein kinase family. MARK subfamily. Contains 1 KA1 (kinase-associated) domain. Contains 1 protein kinase domain. Contains 1 UBA domain.
Cellular localization	Cytoplasm > cytoskeleton. Appears to localize to an intracellular network.

Images



All lanes : Anti-MARK1 antibody (ab70128)
at 1/500 dilution

Lane 1 : Extracts from HeLa cells

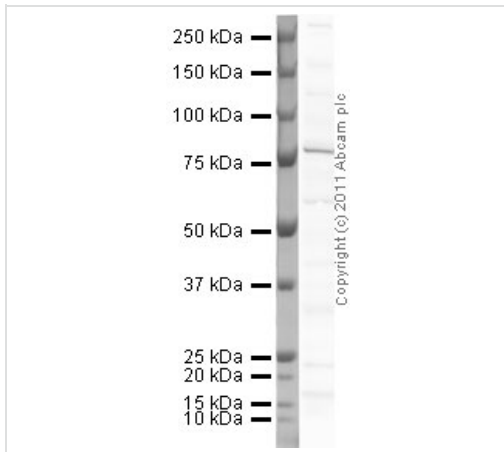
Lane 2 : Extracts from HeLa cells with
immunising peptide at 10 µg

Lysates/proteins at 30 µg per lane.

Predicted band size: 89 kDa

Observed band size: 85 kDa

Additional bands at: 110 kDa. We are
unsure as to the identity of these extra bands.



Western blot - MARK1 antibody (ab70128)

Anti-MARK1 antibody (ab70128) at 1 µg/ml +
 HeLa (Human epithelial carcinoma cell line)
 Whole Cell Lysate (ab27252) at 10 µg

Secondary

Goat polyclonal to Rabbit IgG - H&L - Pre-
 Adsorbed (HRP) (ab65484) at 1/5000 dilution

Developed using the ECL technique.

Performed under reducing conditions.

Predicted band size: 89 kDa

Exposure time: 4 minutes

Please note: All products are "FOR RESEARCH USE ONLY AND ARE NOT INTENDED FOR DIAGNOSTIC OR THERAPEUTIC USE"

Our Abpromise to you: Quality guaranteed and expert technical support

- Replacement or refund for products not performing as stated on the datasheet
- Valid for 12 months from date of delivery
- Response to your inquiry within 24 hours
- We provide support in Chinese, English, French, German, Japanese and Spanish
- Extensive multi-media technical resources to help you
- We investigate all quality concerns to ensure our products perform to the highest standards

If the product does not perform as described on this datasheet, we will offer a refund or replacement. For full details of the Abpromise, please visit <http://www.abcam.com/abpromise> or contact our technical team.

Terms and conditions

- Guarantee only valid for products bought direct from Abcam or one of our authorized distributors