

Product datasheet

Anti-TAF15 antibody ab70390

1 Image

Overview

Product name	Anti-TAF15 antibody
Description	Rabbit polyclonal to TAF15
Host species	Rabbit
Tested applications	Suitable for: WB, IP
Species reactivity	Reacts with: Human Predicted to work with: Mouse, Rat, Rabbit, Horse, Cow, Dog, Pig, Rhesus monkey, Gorilla, Chinese hamster, Orangutan
Immunogen	Synthetic peptide corresponding to region between residue 550 and the C-terminus (residue 592) of Human TAF15 (Swiss-Prot entry Q92804) Run BLAST with ExPASy Run BLAST with NCBI
Positive control	Whole cell lysate from 293T cells.

Properties

Form	Liquid
Storage instructions	Shipped at 4°C. Upon delivery aliquot and store at -20°C. Avoid freeze / thaw cycles.
Storage buffer	Preservative: 0.09% Sodium Azide Constituents: Tris citrate/phosphate, pH 7-8
Purity	Immunogen affinity purified
Clonality	Polyclonal
Isotype	IgG

Applications

Our [Abpromise guarantee](#) covers the use of **ab70390** in the following tested applications.

The application notes include recommended starting dilutions; optimal dilutions/concentrations should be determined by the end user.

Application	Abreviews	Notes
WB		

Application	Abreviews	Notes
-------------	-----------	-------

IP

Application notes

IP: Use at 1 - 4 µg/mg of lysate.
 WB: 1/10000 - 1/30000. Detects a band of approximately 66 kDa (predicted molecular weight: 62 kDa).

Not yet tested in other applications.
 Optimal dilutions/concentrations should be determined by the end user.

Target

Function

RNA and ssDNA-binding protein that may play specific roles during transcription initiation at distinct promoters. Can enter the preinitiation complex together with the RNA polymerase II (Pol II).

Tissue specificity

Ubiquitous. Observed in all fetal and adult tissues.

Involvement in disease

Note=A chromosomal aberration involving TAF15/TAF2N is found in a form of extraskeletal myxoid chondrosarcomas (EMC). Translocation t(9;17)(q22;q11) with NR4A3.

Sequence similarities

Belongs to the RRM TET family.
 Contains 1 RanBP2-type zinc finger.
 Contains 1 RRM (RNA recognition motif) domain.

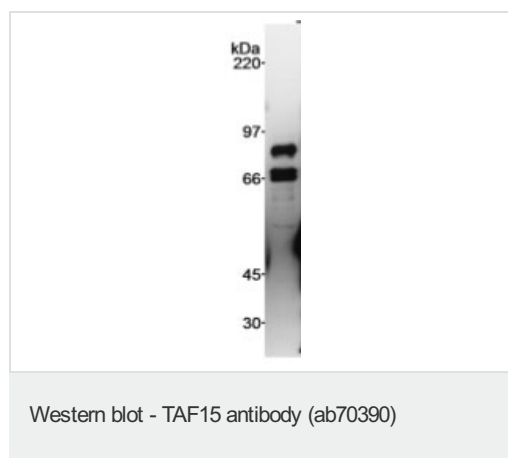
Post-translational modifications

Dimethylated by PRMT1 at Arg-206 to asymmetric dimethylarginine. The methylation may favor nuclear localization and positive regulation of TAF15 transcriptional activity.
 Phosphorylated upon DNA damage, probably by ATM or ATR.

Cellular localization

Nucleus. Cytoplasm. Shuttles from the nucleus to the cytoplasm.

Images



Anti-TAF15 antibody (ab70390) at 1/20000 dilution + Whole cell lysate from 293T cells at 200 µg

Developed using the ECL technique.

Predicted band size: 62 kDa

Observed band size: 66 kDa

Additional bands at: 80 kDa. We are unsure as to the identity of these extra bands.

Exposure time: 5 seconds

Our Abpromise to you: Quality guaranteed and expert technical support

- Replacement or refund for products not performing as stated on the datasheet
- Valid for 12 months from date of delivery
- Response to your inquiry within 24 hours

- We provide support in Chinese, English, French, German, Japanese and Spanish
- Extensive multi-media technical resources to help you
- We investigate all quality concerns to ensure our products perform to the highest standards

If the product does not perform as described on this datasheet, we will offer a refund or replacement. For full details of the Abpromise, please visit <http://www.abcam.com/abpromise> or contact our technical team.

Terms and conditions

- Guarantee only valid for products bought direct from Abcam or one of our authorized distributors