

Product datasheet

Anti-SAT2 antibody ab70429

2 Images

Overview

<b>Product name</b>	Anti-SAT2 antibody
<b>Description</b>	Mouse polyclonal to SAT2
<b>Host species</b>	Mouse
<b>Specificity</b>	This antibody is reactive against mammalian transfected lysate.
<b>Tested applications</b>	<b>Suitable for:</b> WB
<b>Species reactivity</b>	<b>Reacts with:</b> Human
<b>Immunogen</b>	SAT2 (NP_597998.1, 1 a.a. ~ 170 a.a) full-length human protein.
<b>Positive control</b>	Transfected 293T cell lysate and human placenta tissue lysate.

Properties

<b>Form</b>	Liquid
<b>Storage instructions</b>	Shipped at 4°C. Upon delivery aliquot and store at -20°C or -80°C. Avoid repeated freeze / thaw cycles.
<b>Storage buffer</b>	Preservative: None Constituents: 1X PBS, pH 7.2
<b>Purity</b>	Protein G purified
<b>Clonality</b>	Polyclonal
<b>Isotype</b>	IgG

Applications

Our [Abpromise guarantee](#) covers the use of **ab70429** in the following tested applications.

The application notes include recommended starting dilutions; optimal dilutions/concentrations should be determined by the end user.

Application	Abreviews	Notes
-------------	-----------	-------

WB

<b>Application notes</b>	WB: 1/500 - 1/1000. Detects bands of approximately 14 kDa (transfected lysate) and 19 kDa (tissue lysate) (predicted molecular weight: 19 kDa).
--------------------------	---

Not yet tested in other applications.

Optimal dilutions/concentrations should be determined by the end user.

## Target

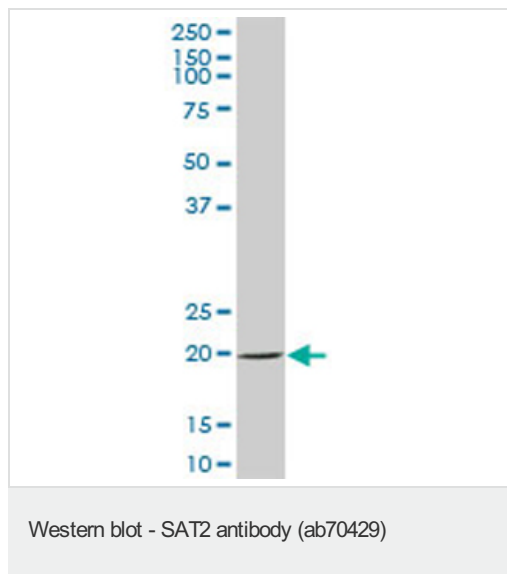
---

<b>Function</b>	Enzyme which catalyzes the acetylation of polyamines. Substrate specificity: norspermidine > spermidine = spermine >> N(1)acetylspermine = putrescine.
<b>Tissue specificity</b>	Widely expressed.
<b>Pathway</b>	Amine and polyamine degradation; putrescine degradation; N-acetylputrescine from putrescine: step 1/1.
<b>Sequence similarities</b>	Belongs to the acetyltransferase family. Contains 1 N-acetyltransferase domain.
<b>Cellular localization</b>	Cytoplasm. Intracellular organelles.

---

## Images

---



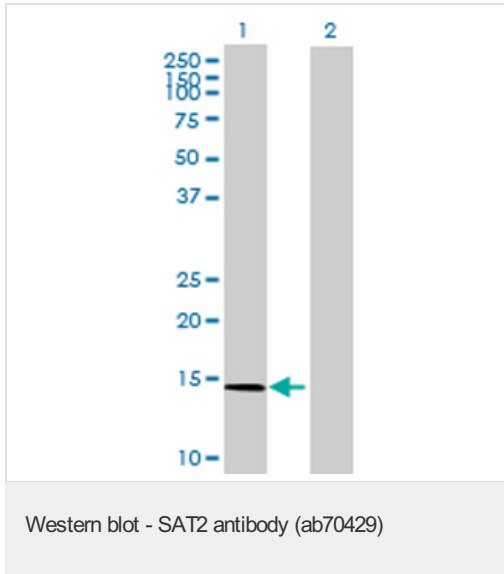
Anti-SAT2 antibody (ab70429) at 1/500  
dilution + human placenta tissue lysate at 25  
 $\mu$ g

### Secondary

Goat Anti-Mouse IgG (H&L)-HRP Conjugate at  
1/2500 dilution

**Predicted band size:** 19 kDa

**Observed band size:** 19 kDa



**All lanes** : Anti-SAT2 antibody (ab70429) at 1/500 dilution

**Lane 1** : SAT2 transfected 293T cell lysate

**Lane 2** : Non-transfected 293T cell lysate

Lysates/proteins at 25 µg per lane.

**Secondary**

**All lanes** : Goat Anti-Mouse IgG (H&L)-HRP

Conjugate at 1/2500 dilution

**Predicted band size:** 19 kDa

**Observed band size:** 14 kDa

**Please note:** All products are "FOR RESEARCH USE ONLY AND ARE NOT INTENDED FOR DIAGNOSTIC OR THERAPEUTIC USE"

**Our Abpromise to you: Quality guaranteed and expert technical support**

- Replacement or refund for products not performing as stated on the datasheet
- Valid for 12 months from date of delivery
- Response to your inquiry within 24 hours
- We provide support in Chinese, English, French, German, Japanese and Spanish
- Extensive multi-media technical resources to help you
- We investigate all quality concerns to ensure our products perform to the highest standards

If the product does not perform as described on this datasheet, we will offer a refund or replacement. For full details of the Abpromise, please visit <http://www.abcam.com/abpromise> or contact our technical team.

**Terms and conditions**

- Guarantee only valid for products bought direct from Abcam or one of our authorized distributors