

Product datasheet

Anti-MEK3 antibody - Aminoterminal end ab70846

2 Images

Overview

Product name	Anti-MEK3 antibody - Aminoterminal end
Description	Rabbit polyclonal to MEK3 - Aminoterminal end
Host species	Rabbit
Tested applications	Suitable for: ELISA, WB, IHC-P
Species reactivity	Reacts with: Human
Immunogen	Synthetic peptide selected from the N-terminal region of human MKK3 conjugated to KLH
Positive control	Jurkat cell lysate, human breast carcinoma tissue

Properties

Form	Liquid
Storage instructions	Shipped at 4°C. Upon delivery aliquot and store at -20°C. Avoid freeze / thaw cycles.
Storage buffer	Preservative: 0.09% Sodium Azide Constituents: PBS
Purity	Protein G purified
Purification notes	This antibody is purified through a protein G column, eluted with high and low pH buffers and neutralized immediately, followed by dialysis against PBS.
Clonality	Polyclonal
Isotype	IgG

Applications

Our [Abpromise guarantee](#) covers the use of **ab70846** in the following tested applications.

The application notes include recommended starting dilutions; optimal dilutions/concentrations should be determined by the end user.

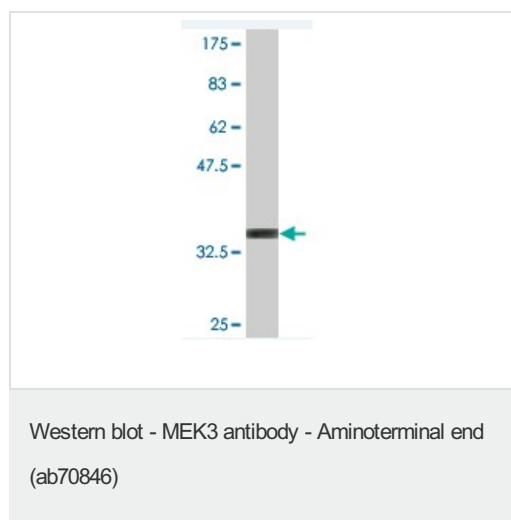
Application	Abreviews	Notes
ELISA		1/1000.
WB		1/100 - 1/500. Detects a band of approximately 30 kDa (predicted molecular weight: 39 kDa).

Application	Abreviews	Notes
IHC-P		1/50 - 1/100.

Target

Function	Dual specificity kinase. Is activated by cytokines and environmental stress in vivo. Catalyzes the concomitant phosphorylation of a threonine and a tyrosine residue in the MAP kinase p38.
Tissue specificity	Abundant expression is seen in the skeletal muscle. It is also widely expressed in other tissues.
Involvement in disease	Note=Defects in MAP2K3 may be involved in colon cancer.
Sequence similarities	Belongs to the protein kinase superfamily. STE Ser/Thr protein kinase family. MAP kinase kinase subfamily. Contains 1 protein kinase domain.
Post-translational modifications	Autophosphorylated. Phosphorylation on Ser-218 and Thr-222 by MAP kinase kinase kinases regulates positively the kinase activity. Yersinia yopJ may acetylate Ser/Thr residues, preventing phosphorylation and activation, thus blocking the MAPK signaling pathway.

Images



Anti-MEK3 antibody - Aminoterminal end (ab70846) at 1/100 dilution + Jurkat cell lysate at 12.5 µg

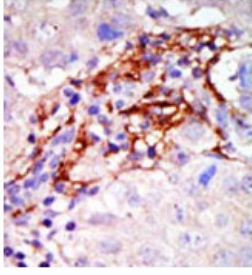
Secondary

HRP-anti-rabbit

Developed using the ECL technique.

Predicted band size: 39 kDa

Observed band size: 30 kDa



Formalin-fixed and paraffin-embedded human breast carcinoma tissue reacted with 1/50 ab70846. A peroxidase-conjugated secondary antibody, followed by AEC staining.

Immunohistochemistry (Formalin/PFA-fixed paraffin-embedded sections) - MEK3 antibody - Aminoterminal end (ab70846)

Please note: All products are "FOR RESEARCH USE ONLY AND ARE NOT INTENDED FOR DIAGNOSTIC OR THERAPEUTIC USE"

Our Abpromise to you: Quality guaranteed and expert technical support

- Replacement or refund for products not performing as stated on the datasheet
- Valid for 12 months from date of delivery
- Response to your inquiry within 24 hours
- We provide support in Chinese, English, French, German, Japanese and Spanish
- Extensive multi-media technical resources to help you
- We investigate all quality concerns to ensure our products perform to the highest standards

If the product does not perform as described on this datasheet, we will offer a refund or replacement. For full details of the Abpromise, please visit <http://www.abcam.com/abpromise> or contact our technical team.

Terms and conditions

- Guarantee only valid for products bought direct from Abcam or one of our authorized distributors