

Product datasheet

Anti-ASK1 antibody ab71430

1 Image

Overview

<b>Product name</b>	Anti-ASK1 antibody
<b>Description</b>	Rabbit polyclonal to ASK1
<b>Host species</b>	Rabbit
<b>Tested applications</b>	<b>Suitable for:</b> ELISA, WB
<b>Species reactivity</b>	<b>Reacts with:</b> Human
<b>Immunogen</b>	Synthetic peptide corresponding to amino acid residues surrounding S966 of human ASK1 conjugated to KLH
<b>Positive control</b>	293 cell lysates transiently transfected with the ASK1 gene.

Properties

<b>Form</b>	Liquid
<b>Storage instructions</b>	Shipped at 4°C. Upon delivery aliquot and store at -20°C. Avoid freeze / thaw cycles.
<b>Storage buffer</b>	Preservative: 0.09% Sodium Azide Constituents: PBS
<b>Purity</b>	Immunogen affinity purified
<b>Purification notes</b>	ab71430 is purified through a protein A column, followed by peptide affinity purification.
<b>Clonality</b>	Polyclonal
<b>Isotype</b>	IgG

Applications

Our [Abpromise guarantee](#) covers the use of **ab71430** in the following tested applications.

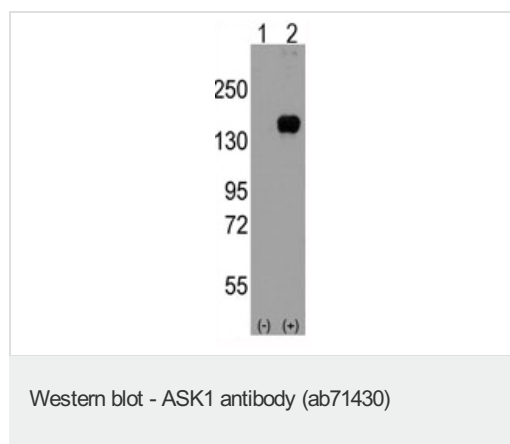
The application notes include recommended starting dilutions; optimal dilutions/concentrations should be determined by the end user.

Application	Abreviews	Notes
ELISA		1/1000.
WB		1/50 - 1/100. Detects a band of approximately 155 kDa (predicted molecular weight: 155 kDa).

## Target

<b>Function</b>	Component of a protein kinase signal transduction cascade. Phosphorylates and activates MAP2K4 and MAP2K6, which in turn activate the JNK and p38 MAP kinases, respectively. Overexpression induces apoptotic cell death.
<b>Tissue specificity</b>	Abundantly expressed in heart and pancreas.
<b>Sequence similarities</b>	Belongs to the protein kinase superfamily. STE Ser/Thr protein kinase family. MAP kinase kinase subfamily. Contains 1 protein kinase domain.
<b>Post-translational modifications</b>	Dephosphorylated and activated by PGAM5.

## Images



**All lanes :** Anti-ASK1 antibody (ab71430) at 1/50 dilution

**Lane 1 :** Nontransfected 293 cell lysates

**Lane 2 :** 293 cell lysates transiently transfected with the ASK1 gene

Lysates/proteins at 2 µg per lane.

**Predicted band size:** 155 kDa

**Observed band size:** 155 kDa

**Please note:** All products are "FOR RESEARCH USE ONLY AND ARE NOT INTENDED FOR DIAGNOSTIC OR THERAPEUTIC USE"

## Our Abpromise to you: Quality guaranteed and expert technical support

- Replacement or refund for products not performing as stated on the datasheet
- Valid for 12 months from date of delivery
- Response to your inquiry within 24 hours
- We provide support in Chinese, English, French, German, Japanese and Spanish
- Extensive multi-media technical resources to help you
- We investigate all quality concerns to ensure our products perform to the highest standards

If the product does not perform as described on this datasheet, we will offer a refund or replacement. For full details of the Abpromise, please visit <http://www.abcam.com/abpromise> or contact our technical team.

## Terms and conditions

- Guarantee only valid for products bought direct from Abcam or one of our authorized distributors